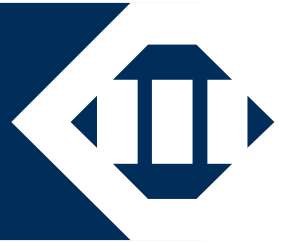


Explosion Proof Range

Specifically designed for the Oil & Gas industry



MVE-Exd



MVE-SV

EX-STOCK DELIVERY
2 YEAR WARRANTY
INTERCHANGEABLE
WITH MOST COMMON
FOOTPRINTS



MAINTENANCE-FREE

OLI greased for life bearing solution does not require periodical re-greasing



EXPLOSION PROOF DESIGN

Certified for use in hazardous locations



MOISTURE SHIELD

OLI's sealing system avoids water and moisture infiltration



VIBRATORS
DESIGNED FOR
HAZARDOUS
ENVIRONMENTS





MVE-Exd EXPLOSION PROOF



4 POLES - 1500/1800 rpm

* Terminal Connections: Y High Voltage

Wm (kgcm)		Model		Centrifugal Force (kg)		Weight (kg)		ELECTRICAL SPECIFICATIONS							
50Hz	60Hz	50Hz	60Hz	50Hz	60Hz	50Hz	60Hz	Input Power (kW)		Nominal Current		* Terminal Connection	Ia / In (Ampere)		Cable Gland
50Hz	60Hz	50Hz	60Hz	50Hz	60Hz	50Hz	60Hz	50Hz	60Hz	400V 50Hz	460V 60Hz		50Hz	60Hz	Class Temp.
57	39	MVE 700/15D-50A0	MVE 700/18D-50A0	714	712	45		0.6	0.7	1.0	1.0	Y	3.0	3.2	3/4" NPT 110°C
89	57	MVE 1100/15D-50A0	MVE 1100/18D-50A0	1,114	1,028	52	45	0.6	0.7	1.3	1.5	Y	3.8	3.8	3/4" NPT 110°C
109	77	MVE 1400/15D-60A0	MVE 1400/18D-60A0	1,364	1,388	73	70	0.8	1.0	1.7	1.8	Y	4.0	4.0	
137	92	MVE 1700/15D-60A1	MVE 1700/18D-60A1	1,725	1,664	76	61	1.0	1.2	2.0	2.0	Y	4.7	4.5	
188	137	MVE 2400/15D-60A1	MVE 2400/18D-60A1	2,358	2,485	78	72	1.3	1.4	2.8	2.7	Y	4.9	4.9	
109	77	MVE 1400/15D-60C0	MVE 1400/18D-60C0	1,364	1,388	73	70	0.8	1.0	1.7	1.8	Y	4.0	4.0	3/4" NPT 110°C
137	92	MVE 1700/15D-60C0	MVE 1700/18D-60C0	1,725	1,664	76	61	1.0	1.2	2.0	2.0	Y	4.7	4.5	
188	137	MVE 2400/15D-60C0	MVE 2400/18D-60C0	2,358	2,485	78	72	1.3	1.4	2.8	2.7	Y	4.9	4.9	
204	136	MVE 2500/15D-70A0	MVE 2500/18D-70A0	2,557	2,454	99	93	1.5	1.6	2.7	2.6	Y	6.0	6.1	
249	170	MVE 3000/15D-70A0	MVE 3000/18D-70A0	3,124	3,071	105	97	1.7	1.9	2.8	2.7	Y	6.5	6.6	3/4" NPT 110°C
204	136	MVE 2500/15D-70B0	MVE 2500/18D-70B0	2,557	2,454	99	93	1.5	1.6	2.7	2.6	Y	6.0	6.1	
249	170	MVE 3000/15D-70B0	MVE 3000/18D-70B0	3,124	3,071	105	97	1.7	1.9	2.8	2.7	Y	6.5	6.6	
204	136	MVE 2500/15D-70C0	MVE 2500/18D-70C0	2,557	2,454	99	93	1.5	1.6	2.7	2.6	Y	6.0	6.1	
249	170	MVE 3000/15D-70C0	MVE 3000/18D-70C0	3,124	3,071	105	97	1.7	1.9	2.8	2.7	Y	6.5	6.6	3/4" NPT 110°C
307	205	MVE 3800/15D-75A0	MVE 3800/18D-75A0	3,853	3,704	136	125	2.3	2.3	4.1	4.0	Y	6.8	6.8	
343	241	MVE 4300/15D-75A0	MVE 4300/18D-75A0	4,312	4,359	141	130	2.4	2.6	4.3	4.1	Y	7.0	7.2	
307	205	MVE 3800/15D-75C0	MVE 3800/18D-75C0	3,853	3,704	136	125	2.3	2.3	4.1	4.0	Y	6.8	6.8	
343	241	MVE 4300/15D-75C0	MVE 4300/18D-75C0	4,312	4,359	141	130	2.4	2.6	4.3	4.1	Y	7.0	7.2	3/4" NPT 110°C
307	205	MVE 3800/15D-75C1	MVE 3800/18D-75C1	3,853	3,704	136	125	2.3	2.3	4.1	4.0	Y	6.8	6.8	
343	241	MVE 4300/15D-75C1	MVE 4300/18D-75C1	4,312	4,359	141	130	2.4	2.6	4.3	4.1	Y	7.0	7.2	
437	304	MVE 5500/15D-80A0	MVE 5500/18D-80A0	5,495	5,495	194	183	3.1	3.1	5.7	5.3	Y	7.1	7.0	
437	304	MVE 5500/15D-80B0	MVE 5500/18D-80B0	5,495	5,495	194	184	3.1	3.1	5.7	5.3	Y	7.1	7.0	3/4" NPT 110°C
437	304	MVE 5500/15D-80B1	MVE 5500/18D-80B1	5,495	5,495	194	184	3.1	3.1	5.7	5.3	Y	7.1	7.0	
437	304	MVE 5500/15D-80C0	MVE 5500/18D-80C0	5,495	5,495	194	183	3.1	3.1	5.7	5.3	Y	7.1	7.0	
437	304	MVE 5500/15D-80C1	MVE 5500/18D-80C1	5,495	5,495	194	183	3.1	3.1	5.7	5.3	Y	7.1	7.0	



MVE-SV SCREEN VIBRATOR EXPLOSION PROOF

4 POLES - 1500/1800 rpm

Wm (kgcm)		Model		Centrifugal Force (kg)		Weight (kg)		ELECTRICAL SPECIFICATIONS							
50Hz	60Hz	50Hz	60Hz	50Hz	60Hz	50Hz	60Hz	Input Power (kW)		Nominal Current		* Terminal Connection	Ia / In (Ampere)		Cable Gland
50Hz	60Hz	50Hz	60Hz	50Hz	60Hz	50Hz	60Hz	50Hz	60Hz	50Hz (400V)	60Hz (460V)		50Hz	60Hz	Metric
279	193	MVE 3500/15D-SV-75A0	MVE 3500/18D-SV-75A0	3,500	3,502	180	170	2.2	2.6	4.3	4.3	Y	6.5	6.5	3/4" NPT 110°C
279	193	MVE 3500/15D-SV-75D0	MVE 3500/18D-SV-75D0	3,500	3,502	180	170	2.2	2.6	4.3	4.3	Y	6.5	6.5	3/4" NPT 110°C
620	434	MVE 8000/15D-SV-85A0	MVE 8000/18D-SV-85A0	7,790	7,851	280	260	3.2	3.8	6.3	6.3	Y	7.1	7.0	3/4" NPT 110°C



UP TO SIZE 50
60Hz masses = 50Hz masses adjusted at 70%



FROM SIZE 51 AND ABOVE
Specific masses for 60Hz

To convert kg into Newton: $N = 9.81 \cdot kg$



- » II 2G Ex db IIB T4 Gb,
- » II 2D Ex tb IIIC T135°C Db
- » Ex db IIB T4 Gb
- » Ex tb IIIC T135°C Db

- » Ambient temperature from -20°C to +60°C
- » Compliance with Essential Health and Safety Requirements
- » IEC EN 60079-0, IEC EN 60079-31, IEC EN 60079-1



DIMENSIONAL SPECIFICATIONS (mm)

Model		Drawing	Size	DIMENSIONAL SPECIFICATIONS (mm)														
50Hz	60Hz			C		M		A	B	Ø G	Holes	D	E	F	H	I	L	Ø N
				50Hz	60Hz	50Hz	60Hz											
MVE 700/15D-50A0	MVE 700/18D-50A0	A	50A0	402		95.5		120	170	17	4	209	249	28	102	186	211	165.5
MVE 1100/15D-50A0	MVE 1100/18D-50A0	A	50A0	472	396	130.5	95.5	120	170	17	4	209	249	28	102	186	211	165.5
MVE 1400/15D-60A0	MVE 1400/18D-60A0	A	60A0	477		111.5		140	190	17	4	234	281	25	124	240	254	221
MVE 1700/15D-60A1	MVE 1700/18D-60A1	A	60A1	477		111.5		140	190	22	4	234	281	25	124	240	254	221
MVE 2400/15D-60A1	MVE 2400/18D-60A1	A	60A1	521		133.5		140	190	22	4	234	281	25	124	240	254	221
MVE 1400/15D-60C0	MVE 1400/18D-60C0	A	60C0	477		111.5		140	170	17	4	234	281	25	124	240	254	221
MVE 1700/15D-60C0	MVE 1700/18D-60C0	A	60C0	477		111.5		140	170	17	4	234	281	25	124	240	254	221
MVE 2400/15D-60C0	MVE 2400/18D-60C0	A	60C0	521		133.5		140	170	17	4	234	281	25	124	240	254	221
MVE 2500/15D-70A0	MVE 2500/18D-70A0	B	70A0	525		123		155	225	22	4	274	310	32	140	256	279	235
MVE 3000/15D-70A0	MVE 3000/18D-70A0	B	70A0	586		153.5		155	225	22	4	274	310	32	140	256	279	235
MVE 2500/15D-70B0	MVE 2500/18D-70B0	B	70B0	525		123		160	210	17.5	4	274	310	32	140	256	279	235
MVE 3000/15D-70B0	MVE 3000/18D-70B0	B	70B0	586		153.5		160	210	17.5	4	274	310	32	140	256	279	235
MVE 2500/15D-70C0	MVE 2500/18D-70C0	C	70C0	525		123		83	230	22	6	274	310	32	140	256	279	235
MVE 3000/15D-70C0	MVE 3000/18D-70C0	C	70C0	586		153.5		83	230	22	6	274	310	32	140	256	279	235
MVE 3800/15D-75A0	MVE 3800/18D-75A0	B	75A0	596		146		155	255	23.5	4	302	329	30	150	286	304	265
MVE 4300/15D-75A0	MVE 4300/18D-75A0	B	75A0	596		146		155	255	23.5	4	302	329	30	150	286	304	265
MVE 3800/15D-75C0	MVE 3800/18D-75C0	C	75C0	596		146		83	230	22	6	302	329	30	150	286	304	265
MVE 4300/15D-75C0	MVE 4300/18D-75C0	C	75C0	596		146		83	230	22	6	302	329	30	150	286	304	265
MVE 3800/15D-75C1	MVE 3800/18D-75C1	C	75C1	596		146		105	248	23	6	302	329	30	150	286	304	265
MVE 4300/15D-75C1	MVE 4300/18D-75C1	C	75C1	596		146		105	248	23	6	302	329	30	150	286	304	265
MVE 5500/15D-80A0	MVE 5500/18D-80A0	B	80A0	612		127		180	280	26	4	330	379	33	176	330	358	310
MVE 5500/15D-80B0	MVE 5500/18D-80B0	C	80B0	612		127		124	305	26	6	330	379	33	176	330	358	310
MVE 5500/15D-80B1	MVE 5500/18D-80B1	B	80B1	612		127		248	305	26	4	360	379	33	176	330	358	310
MVE 5500/15D-80C0	MVE 5500/18D-80C0	C	80C0	612		127		118	280	26	6	330	379	33	176	330	358	310
MVE 5500/15D-80C1	MVE 5500/18D-80C1	C	80C1	612		127		105	248	22	6	330	379	33	176	330	358	310



DIMENSIONAL SPECIFICATIONS (mm)

Model		Drawing	Size	DIMENSIONAL SPECIFICATIONS (mm)																
50Hz	60Hz			C	M	A	A1	B	Ø G	Holes	D	E	F	H	I	L	L1	L2	L3	N
MVE 3500/15D-SV-75A0	MVE 3500/18D-SV-75A0	M	75A0	1,080	179	959	-	229	29	4	285	316	60	137	322	830	-	-	-	279
MVE 3500/15D-SV-75D0	MVE 3500/18D-SV-75D0	M	75D0	1,080	179	959	-	241	20	4	285	316	60	137	322	830	-	-	-	279
MVE 8000/15D-SV-85A0	MVE 8000/18D-SV-85A0	O	85A0	1,425	/	800	1,280	280	22	8	330	407	57	180	360	714	886	1,193	1,366	345

NOTE: Dimensions with coarse degree of accuracy related to UNI 22768/1

This information is provided without warranty, representation, inducement or licence of any kind. It is accurate to the best OLI knowledge or is obtained from sources believed to be accurate. OLI therefore assumes no legal responsibility. The latest and most updated information are available online.



» Class 1, Div.1 Group C, D T4 IP66
 » Conform to UL 1004-1, UL 1004-3, UL1203; UL674, CSA C22.2 No.145, CSA C22.2 No.30-M1986.



CERTIFICATIONS

Explosion Proof and Screen Vibrator



Comply with European Directive - Low voltage 2014/35/UE; Machine Directive 2006/42/EC - ATEX 2014/34/UE - UL 1836. UL 1004-1. UL 674 - CSAC22.2 NO 25. 100. 145

CATEGORY	CERTIFICATIONS	INTERNATIONAL STANDARD	GAS	DUST
ATEX zone 1-21 Class I Div.1 Class II Div.1 **		EN 60079-0, EN 60079-31, EN 60079-1	ATEX II 2G Ex db IIB T4 Gb	ATEX II 2D Ex tb IIIC T135°C Db
		IEC 60079-0, IEC 60079-31, IEC 60079-1	IECEx Ex db IIB T4 Gb	IECEx Ex tb IIIC T135°C Db
		UL 1004-1, UL 1004-3, UL1203; UL674, CSA C22.2 No.145, CSA C22.2 No.30-M1986.	CLASS I Div.1 Group C, D T4 IP66	CLASS II Div.1 GROUP E,F,G**

** Available soon



FEATURES

OLI "Explosion Proof" vibrating motors are specifically designed for heavy duty equipment, such as for example shale shakers. They are built to last in the most demanding environment without need of any maintenance and they match the most popular footprints on the market.

ADVANTAGES OF OLI MVE-Exd

- Top quality bearings
- Greased for life = 100% maintenance free
- Excellent moisture shield
- Wide terminal box and multiple voltages available
- Easy centrifugal force adjustment

APPLICATION ADVANTAGES

- Powerful vibration and quick synchronization granted by heavy duty windings
- No more risk of grease related issues thanks to OLI's sealed bearing solution
- Easy retrofit on existing shale shakers thanks to multiple voltages and footprints

MVE-Exd and MVE-SV EXPLOSION PROOF - 4 POLES RANGE

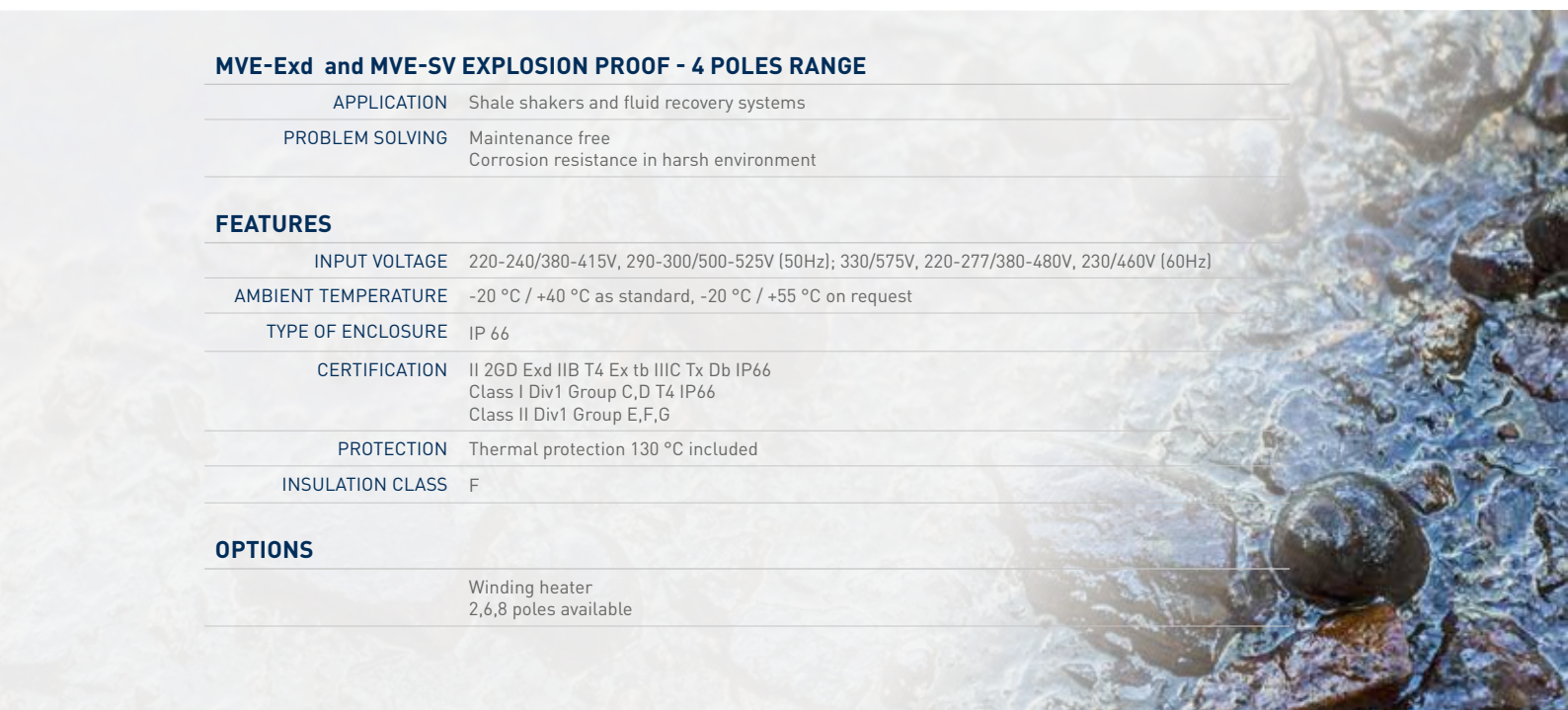
APPLICATION	Shale shakers and fluid recovery systems
PROBLEM SOLVING	Maintenance free Corrosion resistance in harsh environment

FEATURES

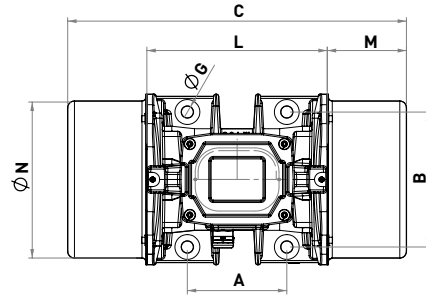
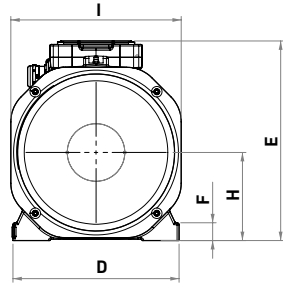
INPUT VOLTAGE	220-240/380-415V, 290-300/500-525V (50Hz); 330/575V, 220-277/380-480V, 230/460V (60Hz)
AMBIENT TEMPERATURE	-20 °C / +40 °C as standard, -20 °C / +55 °C on request
TYPE OF ENCLOSURE	IP 66
CERTIFICATION	II 2GD Exd IIB T4 Ex tb IIIC Tx Db IP66 Class I Div1 Group C,D T4 IP66 Class II Div1 Group E,F,G
PROTECTION	Thermal protection 130 °C included
INSULATION CLASS	F

OPTIONS

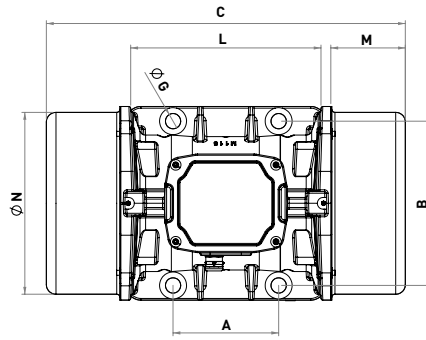
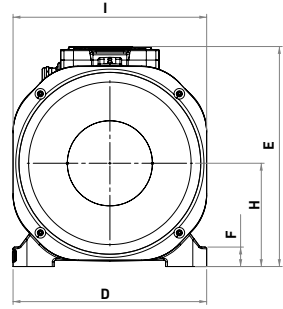
Winding heater 2,6,8 poles available



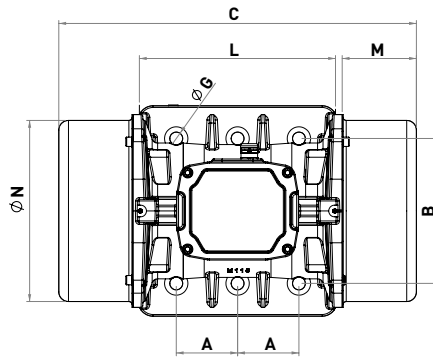
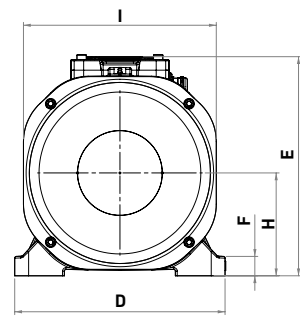
A



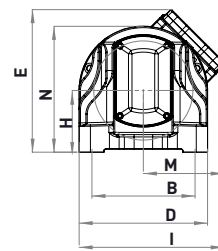
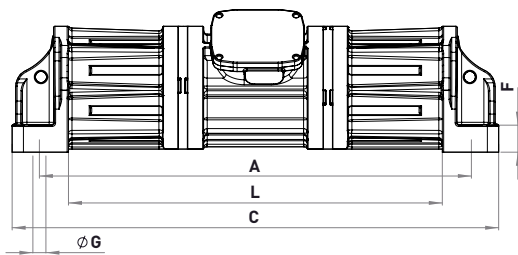
B



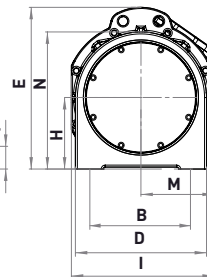
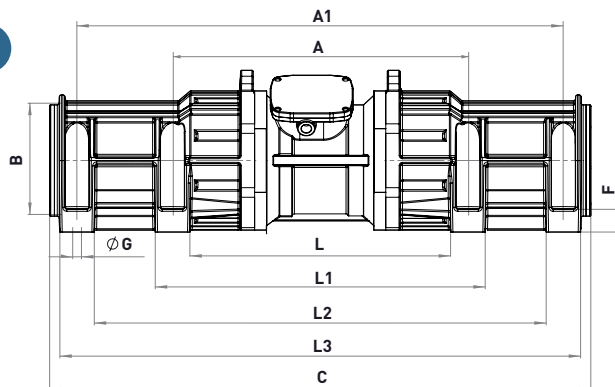
C

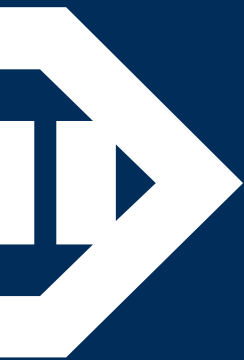


M



O





WHEN YOU NEED IT, WHERE YOU NEED IT

THE WORLDWIDE LEADER IN VIBRATION TECHNOLOGY



OLI WORLDWIDE

OLI Australia	OLI Italy	OLI Russia
OLI Benelux	OLI Korea	OLI South Africa
OLI Brazil	OLI Malaysia	OLI Spain
OLI China	OLI Malta	OLI Thailand
OLI France	OLI Mexico	OLI Turkey
OLI Germany	OLI Middle East	OLI UK
OLI India	OLI Nordic	OLI USA
OLI Indonesia	OLI Poland	OLI Vietnam



OLI Headquarters

Via Sparato, 14
41036 Medolla (MO) - Italy

+39 0535 41 06 11

info@olivibra.com

WWW.OLIVIBRA.COM