



# INDUSTRIAL VIBRATORS

ELECTRIC VIBRATORS FOR INDUSTRIAL APPLICATIONS



THE WORLDWIDE LEADER IN VIBRATION TECHNOLOGY





|                           |   |
|---------------------------|---|
| <b>Company profile</b>    | 4 |
| <b>Technical features</b> | 6 |

### **MVE Standard Range**

|                       |    |
|-----------------------|----|
| 2 poles               | 12 |
| 4 poles               | 14 |
| 6 poles               | 16 |
| 8 poles               | 18 |
| 2 poles single-phase  | 20 |
| MVE-MICRO             | 22 |
| MVE-DC Direct Current | 24 |

### **MVE-Exd Explosion-Proof**

|               |    |
|---------------|----|
| 2 and 4 poles | 26 |
| 6 and 8 poles | 28 |

### **MVE-Milling Grain Purifier**

|                    |    |
|--------------------|----|
| 6, 8, 10, 12 poles | 30 |
|--------------------|----|

### **MVE-SV Screen Vibrator**

|         |    |
|---------|----|
| 4 poles | 32 |
|---------|----|

### **MVE-SS Stainless Steel**

|                  |    |
|------------------|----|
| 2, 4, 6, 8 poles | 34 |
|------------------|----|

### **MVE-FD Flanged Drive**

|            |    |
|------------|----|
| 6, 8 poles | 36 |
|------------|----|

|                           |            |
|---------------------------|------------|
| <b>Installation</b>       | 40         |
| <b>Technical drawings</b> | extra page |



**Worldwide leader in vibration technology**

## OUR 3 DIVISIONS

PROVIDE CUSTOMERS WITH OPTIMAL SOLUTIONS FOR ALL REQUIREMENTS

### INDUSTRIAL VIBRATORS



Electric motovibrators for vibrating equipment.

### FLOW AIDS



Comprehensive range of electric and pneumatic vibrators to solve any problem of flowability.

### CONCRETE CONSOLIDATION



Internal and external vibrators, converters and accessories for reliable and efficient concrete compaction.



Founded in 1960 in Milan, OLI has undergone remarkable evolution, solidifying its position as **the world's top-selling manufacturer of Industrial Vibrators**. The company has expanded its global presence with **24 Trading Subsidiaries**, over **70 local warehouses**, and **4 manufacturing plants**.

Initially focused on immersion vibrators for concrete consolidation, OLI has emerged as a global leader in vibration technology. Offering a diverse range of **electric** and **pneumatic internal** and **external vibrators**, OLI seamlessly integrates performance and reliability to adapt to dynamic market demands.

OLI has refined its business strategy to prioritize **rapid stock delivery** and unparalleled **technical assistance**,

ensuring customers worldwide have prompt access to **top-tier products and support**. Exceptional customer service is a cornerstone of OLI's operations, characterized by efficient order processing and universal access to high-quality products and services.

The company boasts a **team of specialized engineers** supported by globally certified management, ready to offer the expertise needed to address customer needs efficiently and safely.

OLI is not only committed to providing cutting-edge equipment but is also at the forefront of **developing innovative products**, aiming to maintain its leadership in the vibration technology industry and continuously set new standards



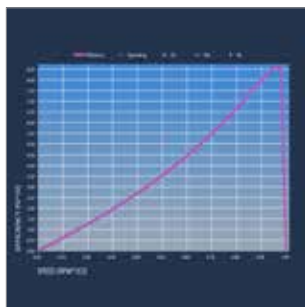
# TECHNICAL FEATURES

## QUALITY



- World class materials
- Class F insulation
- Durable sealing
- Premium bearings
- Strong body design - FEM designed
- Vacuum insulation
- FMEA analysis
- 3D quality check

## EFFICIENCY



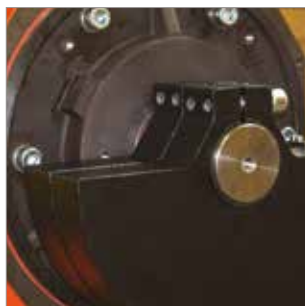
- Optimised power/weight ratio
- S1 continuous duty service
- Optimized electric design

## RELIABILITY



- PTC thermistor 130 °C
- Specific grease retaining device
- Tropicalised standard
- IP66 protection
- Class F insulation

## FLEXIBILITY



- Easy mass adjustment
- Various voltages and frequencies available
- Easy access to the terminal box
- Multiple eye-bolts



# Standard specifications

| Specification                          | PRODUCT RANGE  |   |  |   |  |
|--|--|---|--|---|--|
|  | Standard   | Explosion-Proof   | Milling Grain Processing   | Screen Vibrator   | Stainless Steel  |
| Power supply                           | Three-phase from 24V to 690V.<br>50Hz or 60Hz.<br>Single phase 110V 60Hz and 220V 50Hz.<br>Three-phase motors are designed for inverter application.                           | Three-phase from 220V to 575V.<br>50Hz or 60Hz.<br>All motors are designed for inverter application from 20Hz to rated frequency. |  | Three-phase from 220V to 575V.<br>50Hz or 60Hz.<br>All motors are designed for inverter application from 20Hz to rated frequency. |  |
| Time rating                            | Continuous duty (S1).  |   |  |   |  |
| Protection structure                   | Mechanical protection IP66 according to IEC 60529.   |   |  |   |  |
| Bearings                               | Ball bearings<br>from size MICRO to 50.<br>Roller bearings<br>from size 60 to 110.   | Roller bearings.  |  |   | Ball bearings<br>from size 10 to 50*<br>Roller bearing for<br>size 60. |
| Coating colour                         | Polyester powder coating. Standard colour RAL 2009.<br>Special corrosion resistant painting available on request on Standard range only.                                       |   |  |   | AISI 316 frame<br>not painted.   |
| Footprint                              | Compatibility with the main competitor's footprint on request.   |   |  |   | /  |
| Installation and operating environment | For indoor and outdoor use.  |   |  |   |  |
|  | Ambient temperature: from -20 °C to +40 °C.<br>Up to +55 °C available on request.  | Ambient temperature:<br>from -20 °C to +60 °C.  | Ambient temperature:<br>from -20 °C to +40 °C.   | Ambient temperature:<br>from -20 °C to +40 °C.  | Ambient temperature:<br>from -20 °C to +40 °C.                         |
| Standards supported                    | Conformity with European Directive.<br>Low voltage 2014/35/UE.<br>Machine directive 2006/42/EC.<br>ATEX 2014/34/UE.  |   |  |   |  |
| Mass covers                            | Aluminium, for vibrators from size 10 to size 50 and size 100, 105, 110.<br>Mild steel, for size 60 to size 91.<br>Stainless steel AISI 304, for direct current motovibrators. | AISI 304<br>Stainless Steel.  | Mild Steel.  | Aluminium.  | AISI 304<br>Stainless Steel.   |
| Windings                               | 2, 4, 6 and 8 poles three-phase asynchronous motor from size 10 to 110.<br>2 poles single phase from size 10 to 30.  |   | 6, 8, 10 and 12 poles three-phase asynchronous motor.  | 4 poles.  | 2, 4, 6 and 8 poles three-phase asynchronous motor.                    |
|  | Class F insulating materials (155 °C).<br>Vacuum impregnated windings.<br>PTC thermistor 130 °C standard from size 60.   | Thermal switch<br>130 °C standard<br>from size 60.  | Class F insulating materials (155 °C).<br>Vacuum impregnated windings.<br>PTC thermistor 130 °C standard from size 60. | Thermal switch<br>130 °C.   | Class F insulating materials (155 °C).<br>Vacuum impregnated windings. |
| Flanges                                | Grey cast iron up to size 80. Ductile cast iron from size 100.   |   |  | Ductile cast iron.  | Grey cast iron.  |
| Frame                                  | Aluminium up to size 50. Ductile cast iron from size 60.   |   |  | Aluminium.  | AISI 316.  |
| Shaft                                  | Steel alloy highly resistant.  |   |  |   |  |
| Eccentric masses                       | Completely adjustable.   |   |  |   |  |

\* Except for MVE 710/15N-50A0 and MVE 510/1N-50A0







# Certifications

## Standard



Conformity with European Directive - Low voltage 2014/35/UE; Machine Directive 2006/42/EC; ATEX 2014/34/UE - UL 1836. UL 1004-1 - SAC22.2 NO 25. 100. 145

| CATEGORY  | CERTIFICATIONS | INTERNATIONAL STANDARD   | GAS | DUST                          |
|---|----------------|--|-----|-------------------------------|
| ATEX zone 21<br>Class II Div.2<br>Temperature range<br>-20/+40 °C * |                | EN 60079-0, EN 60079-31  | n/a | II2D Ex tb IIIC Tx Db IP66    |
|   |                | IEC 60079-0, IEC 60079-31  | n/a | Ex tb IIIC Tx Db IP66         |
|   |                | UL 1004-1, UL 60079-0, UL 60079-31<br>CSA 22.2 100, CSA 22.2 60079-0,<br>CSA 22.2 60079-31 | n/a | Class II Div.2 Groups F, G T4 |

\* Extended temperature range up to 55 °C available on request.

Tx = T100 °C up to size 30 included;  
T135 °C from size 40 up.

## Direct Current, Grain Processing, Stainless Steel, Screen Vibrator and Flanged Drive



Conformity with European Directive - Low voltage 2014/35/UE; Machine Directive 2006/42/EC; ATEX 2014/34/UE

| CATEGORY  | CERTIFICATIONS | INTERNATIONAL STANDARD     | GAS | DUST                      |
|---|----------------|----------------------------|-----|---------------------------|
| ATEX zone 22<br>Temperature range<br>-20/+40 °C |                | EN 60079-0, EN 60079-31    | n/a | II3D Ex tc IIIC T100 IP66 |
|   |                | UL 1446, CSA C22.2 NO 0-10 | n/a | n/a                       |

## Explosion Proof and Screen Vibrator



Conformity with European Directive - Low voltage 2014/35/UE; Machine Directive 2006/42/EC - ATEX 2014/34/UE - UL 1836. UL 1004-1. UL 674 - CSAC22.2 NO 25. 100. 145

| CATEGORY   | CERTIFICATIONS | INTERNATIONAL STANDARD   | GAS                                 | DUST                            |
|--|----------------|--|-------------------------------------|---------------------------------|
| ATEX zone 1-21<br>Class I Div.1<br>Class II Div.1 **<br>Temperature range -20/+60 °C |                | EN 60079-0, EN 60079-31, EN 60079-1  | ATEX II 2G Ex db IIB T4 Gb          | ATEX II 2D Ex tb IIIC T135°C Db |
|  |                | IEC 60079-0, IEC 60079-31,<br>IEC 60079-1  | IECEX Ex db IIB T4 Gb               | IECEX Ex tb IIIC T135°C Db      |
|  |                | UL 1004-1,<br>UL 1004-3, UL1203; UL674,<br>CSA C22.2 No.145,<br>CSA C22.2 No.30-M1986. | CLASS I Div.1<br>Group C, D T4 IP66 | CLASS II Div.1 GROUP E,F,G**    |

\* Screen vibrator is also available with the same certifications as the standard, not explosion proof range, mentioned in the first chart of this page.

\*\* Soon available.

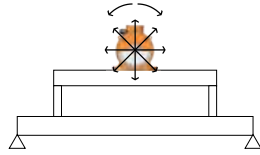


# How to choose a motovibrator

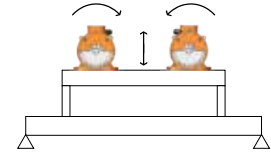
1.

Choose rpm and the amplitude "e" (0 - peak) suitable for your application:

Circular vibration



Linear vibration



| Application processes           | Vibration |        | Revolutions Per Minute |     |      |      |      |      |
|---------------------------------|-----------|--------|------------------------|-----|------|------|------|------|
|                                 |           |        | 50Hz                   | 750 | 1000 | 1500 | 3000 | 6000 |
|                                 | Circular  | Linear | 60Hz                   | 900 | 1200 | 1800 | 3600 | -    |
| Conveying                       |           | ✓      |                        |     | ✓    | ✓    |      |      |
| Separation / Screening / Sizing |           | ✓      |                        | ✓   | ✓    | ✓    |      |      |
| Positioning / Feeding           |           | ✓      |                        | ✓   | ✓    | ✓    |      |      |
| Filter cleaning                 | ✓         |        |                        |     |      |      | ✓    |      |
| Silo/hopper emptying            | ✓         |        |                        |     |      |      | ✓    |      |
| Fluid beds                      |           | ✓      |                        | ✓   | ✓    |      |      |      |
| Bin activators                  | ✓         |        |                        |     |      | ✓    | ✓    |      |
| Compacting                      |           | ✓      |                        |     |      |      | ✓    | ✓    |
| Concrete consolidation          | ✓         |        |                        |     |      |      | ✓    | ✓    |

| rpm   | e (mm) |      |
|-------|--------|------|
|       | Min.   | Max. |
| 3,600 | 0.3    | 0.6  |
| 3,000 | 0.3    | 0.8  |
| 1,800 | 1.2    | 2.2  |
| 1,500 | 1.4    | 2.6  |
| 1,200 | 2.5    | 4.0  |
| 1,000 | 3.0    | 5.2  |
| 900   | 3.5    | 5.5  |
| 750   | 3.5    | 6.0  |

2.

Choose an MVE from the tables of the following pages and use its Wm into this formula:

$$e = \frac{n \times UW}{n \times M_{mot} + M_{vm}}$$

e = amplitude of vibration 0-peak (in)

n = number of vibrating motors

UW = Unbalanced (inlbs)

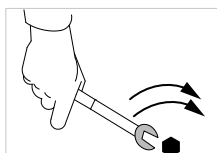
M<sub>mot</sub> = motor weight (lbs)

M<sub>vm</sub> = vibrating machine weight (without material and motors)

3.

Check the obtained value "e":

- If it is similar to the required one (step 1) → the MVE model is correct.
- If it is not similar to the required one (step 1) → repeat the process (step 2) with a different MVE model.



For tips on installation see section page 36










# Standard Rated Voltages

Several voltages are available to match local electric specifications worldwide both at 50Hz and 60Hz.

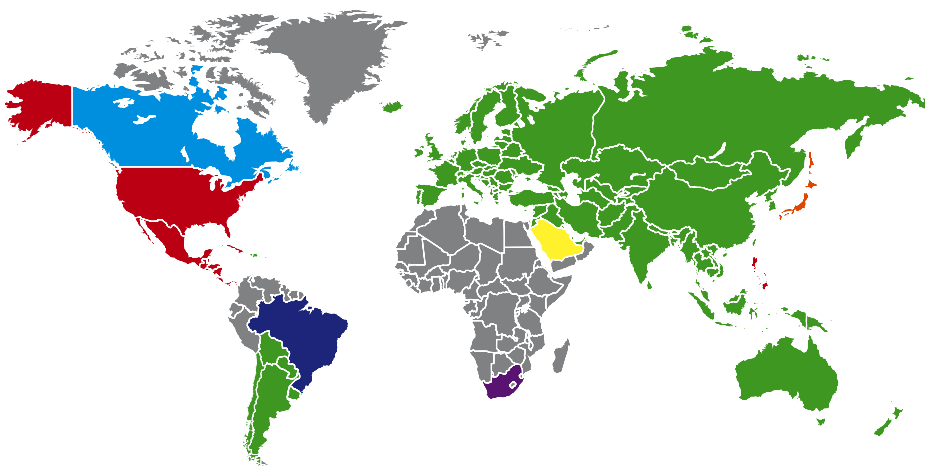
All OLI vibrators can be operated with double voltage by simply changing the connections inside the terminal box from **Star** to **Delta** or vice-versa.

**As a general rule MVEs with rated power >4,3kW have standard Delta terminal box connection, with the only exception of MVE 5000/3E-75A1. Smaller MVEs have standard Star terminal box connection.** Refer to the product specification charts to see the factory setting for each model.

*For details about "Star" and "Delta" connections see page 37.*

|   | Voltages  | Hz                   |
|---|---|----------------------|
|  | 200-230/345-400 V   | 50/60                |
|  | 220-240/380-415 V<br>380-415 V (Delta) *                                      | 50<br>50             |
|  | 230/460 V *<br>460 V (Delta)*   | 60<br>60             |
|  | 330/575 V*<br>575 V (Delta) *<br>460 V (Delta)*                               | 60<br>60<br>60       |
|  | 290-300/500-525 V<br>500-525 V (Delta)  | 50<br>50             |
|  | 207-253/414-480 V   | 60                   |
|  | 220-240/380-415 V<br>220-277/380-480 V<br>380/415 V (Delta)<br>460 V (Delta)* | 50<br>60<br>50<br>60 |

**\* Voltage Tolerance: ± 10%**



## Optionals



### STEEL-IT

Specifically developed for food applications featuring a special coating containing AiSi 316L stainless steel.



### STAINLESS STEEL COVERS

Available with clean finishing. AiSi 304 stainless steel mass covers (on request) for the most demanding applications. Available of to size 91.



### SPLIT COVERS

Developed for space saving applications. Available from size 60 and above.



### EXTENDED SHAFTS

Designed for multiple vibrator application. Available on request.



### HEATERS

To be used in severe cold environment.



### FOOTPRINT

Competitor's footprint available on request.

### IMPORTANT:

Rated voltage might change according to the certification level permitted when some optionals are chosen.



# MVE STANDARD RANGE

## 2 POLES – 3000/3600 rpm



Class II Div.2: Temp. Class T4  
II 2D Temp. Class: ● 100 °C ● 135 °C

\* Terminal Connections: Y High Voltage ; ▲ Low Voltage

| Unbalance (inlb) |       | Model             | Centrifugal Force (lb) |        | Weight (lb) |      | ELECTRICAL SPECIFICATIONS |                  |       |                          |             |                        |       |      |             |
|------------------|-------|-------------------|------------------------|--------|-------------|------|---------------------------|------------------|-------|--------------------------|-------------|------------------------|-------|------|-------------|
| 50Hz             | 60Hz  |                   | 60Hz                   | 50Hz   | 60Hz        | 50Hz | 60Hz                      | Input Power (Hp) |       | Standard Nominal Current |             | * Terminal Connections | Ia/In |      | Cable Gland |
|                  |       |                   |                        |        |             |      |                           | 50Hz             | 60Hz  | 50Hz (400V)              | 60Hz (460V) |                        | 50Hz  | 60Hz |             |
| 0.57             | 0.43  | MVE 160/2E-10A0   | 146                    | 157    | 9           |      | 0.12                      | 0.12             | 0.25  | 0.23                     | Y           | 3.2                    | 3.2   | M16  | ●           |
| 0.85             | 0.57  | MVE 220/2E-10A0   | 216                    | 209    | 11          |      | 0.12                      | 0.12             | 0.25  | 0.23                     | Y           | 3.2                    | 3.2   | M16  | ●           |
| 1.61             | 1.13  | MVE 440/2E-20A0   | 412                    | 417    | 15          |      | 0.20                      | 0.24             | 0.35  | 0.30                     | Y           | 3.5                    | 3.5   | M20  | ●           |
| 1.61             | 1.13  | MVE 440/2E-23A0   | 412                    | 417    | 16          |      | 0.20                      | 0.24             | 0.35  | 0.30                     | Y           | 3.5                    | 3.5   | M20  | ●           |
| 2.77             | 1.94  | MVE 690/2E-30A0   | 708                    | 712    | 22          |      | 0.34                      | 0.38             | 0.52  | 0.45                     | Y           | 3.8                    | 3.7   | M20  | ●           |
| 3.45             | 2.47  | MVE 890/2E-30A0   | 897                    | 906    | 23          |      | 0.36                      | 0.44             | 0.58  | 0.60                     | Y           | 3.7                    | 3.7   | M20  | ●           |
| 4.46             | 3.20  | MVE 1200/2E-40A0  | 1,168                  | 1,177  | 35          |      | 0.67                      | 0.78             | 0.96  | 0.97                     | Y           | 4.2                    | 4.4   | M20  | ●           |
| 6.47             | 4.59  | MVE 1700/2E-40A0  | 1,671                  | 1,687  | 36          |      | 0.79                      | 0.82             | 1.25  | 1.24                     | Y           | 4.5                    | 5.2   | M20  | ●           |
| 6.81             | 4.80  | MVE 1800/2E-50A0  | 1,750                  | 1,764  | 45          |      | 0.94                      | 1.13             | 1.45  | 1.50                     | Y           | 4.0                    | 4.0   | M20  | ●           |
| 8.79             | 6.08  | MVE 2300/2E-50A0  | 2,216                  | 2,233  | 47          |      | 1.27                      | 1.54             | 1.85  | 1.95                     | Y           | 4.6                    | 4.7   | M20  | ●           |
| 11.54            | 8.07  | MVE 3100/2E-50A0  | 2,987                  | 3,009  | 48          |      | 1.74                      | 1.85             | 2.44  | 2.25                     | Y           | 5.4                    | 5.2   | M20  | ●           |
| 13.57            | 9.64  | MVE 3500/2E-60A0  | 3,530                  | 3,545  | 112         | 109  | 2.07                      | 2.15             | 2.94  | 2.61                     | Y           | 6.1                    | 6.4   | M25  | ●           |
| 15.96            | 11.98 | MVE 4100/2E-60A0  | 4,469                  | 4,403  | 114         | 111  | 2.82                      | 2.82             | 3.75  | 3.42                     | Y           | 6.7                    | 6.6   | M25  | ●           |
| 19.95            | 13.83 | MVE 5100/2E-60A0  | 5,075                  | 5,084  | 116         | 112  | 3.22                      | 3.29             | 4.44  | 3.45                     | Y           | 6.2                    | 6.5   | M25  | ●           |
| 29.56            | 19.05 | MVE 7600/2E-75A1  | 7,169                  | 7,002  | 227         | 224  | 3.70                      | 3.89             | 5.30  | 4.61                     | Y           | 8.5                    | 8.4   | M32  | ●           |
| 34.46            | 24.30 | MVE 8800/2E-75A1  | 8,891                  | 8,933  | 236         | 229  | 3.89                      | 3.89             | 5.30  | 4.61                     | Y           | 8.7                    | 9.9   | M32  | ●           |
| 44.81            | 30.28 | MVE 11500/2E-75A1 | 11,043                 | 11,129 | 245         | 233  | 5.36                      | 5.36             | 7.22  | 6.28                     | Y           | 8.7                    | 10.0  | M32  | ●           |
| 56.23            | 39.30 | MVE 14400/2E-85A0 | 14,352                 | 14,445 | 504         | 506  | 7.01                      | 7.38             | 9.43  | 8.20                     | ▲           | 8.7                    | 9.0   | M32  | ●           |
| 77.95            | 56.23 | MVE 20100/2E-85A0 | 19,897                 | 20,668 | 530         | 517  | 12.74                     | 12.47            | 17.80 | 14.40                    | ▲           | 8.6                    | 8.8   | M32  | ●           |
| 56.23            | 39.30 | MVE 14400/2E-86A0 | 14,352                 | 14,445 | 504         | 506  | 7.38                      | 8.45             | 9.50  | 9.50                     | ▲           | 8.2                    | 7.7   | M32  | ●           |
| 77.95            | 56.23 | MVE 20100/2E-86A0 | 19,897                 | 20,668 | 530         | 517  | 8.85                      | 10.33            | 11.50 | 11.50                    | ▲           | 8.2                    | 8.2   | M32  | ●           |



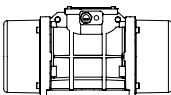
UP TO SIZE 60 (NOT INCLUDED)  
60Hz masses = 50Hz masses adjusted at 70%



ABOVE SIZE 60 (INCLUDED)  
Specific masses for 60Hz



- » II2D Ex tb IIIC Tx Db IP66
- » Equipment and protective system intended for use in potentially explosive atmospheres (Zone 21) - Directive 2014/34/UE
- » Compliance with Essential Health and Safety Requirements
- » IEC 60034-1, IEC EN 60079-0, IEC EN 60079-31



|                   |         | DIMENSIONAL SPECIFICATIONS (inches) |       |           |       |                    |       |      |       |       |       |       |       |       |       |       |       |       |
|-------------------|---------|-------------------------------------|-------|-----------|-------|--------------------|-------|------|-------|-------|-------|-------|-------|-------|-------|-------|-------|-------|
| Model             | Drawing | Size                                | C     |           | M     |                    | A     | B    | Ø G   | Holes | D     | E     | F     | H     | I     | L     | N     |       |
|                   |         |                                     | 50Hz  | 60Hz      | 50Hz  | 60Hz               |       |      |       | n°    |       |       |       |       |       |       |       |       |
| MVE 160/2E-10A0   | A1      | 10A0                                | 8.39  | 60Hz      | 1.77  | Multiple Footprint |       |      | 4     | 5.12  | 5.31  | 0.41  | 1.97  | 3.78  | 4.21  | 3.35  |       |       |
|                   |         |                                     |       |           |       | 2.44-2.91          | 4.17  | 0.35 |       |       |       |       |       |       |       |       |       |       |
|                   |         |                                     | 1.30  | 3.27-4.02 | 0.28  |                    |       |      |       |       |       |       |       |       |       |       |       |       |
| MVE 220/2E-10A0   | A1      | 10A0                                | 8.39  | 60Hz      | 1.77  | Multiple Footprint |       |      | 4     | 5.12  | 5.31  | 0.41  | 1.97  | 3.78  | 4.21  | 3.35  |       |       |
|                   |         |                                     |       |           |       | 2.44-2.91          | 4.17  | 0.35 |       |       |       |       |       |       |       |       |       |       |
|                   |         |                                     | 1.30  | 3.27-4.02 | 0.28  |                    |       |      |       |       |       |       |       |       |       |       |       |       |
| MVE 440/2E-20A0   | B1      | 20A0                                | 9.17  | 60Hz      | 2.13  | 2.44-2.91          | 4.17  | 0.35 | 4     | 5.12  | 6.06  | 0.59  | 2.56  | 4.92  | 4.72  | 4.41  |       |       |
| MVE 440/2E-23A0   | G       | 23A0                                | 8.74  | 60Hz      | 2.17  | Multiple Footprint |       |      | 4     | 6.46  | 5.51  | 0.98  | 3.23  | 4.57  | 6.26  | 4.33  |       |       |
|                   |         |                                     |       |           |       | 2.44-2.91          | 4.17  | 0.35 |       |       |       |       |       |       |       |       |       |       |
|                   |         |                                     |       |           |       | 2.56               | 5.51  | 0.51 |       |       |       |       |       |       |       |       |       |       |
|                   |         |                                     |       |           |       | 4.53               | 5.31  | 0.43 |       |       |       |       |       |       |       |       |       |       |
|                   |         |                                     | 5.31  | 4.53      | 0.43  |                    |       |      |       |       |       |       |       |       |       |       |       |       |
| MVE 690/2E-30A0   | C1      | 30A0                                | 10.00 | 60Hz      | 1.65  | Multiple Footprint |       |      | 4     | 5.91  | 6.81  | 0.59  | 3.11  | 5.91  | 6.54  | 5.28  |       |       |
|                   |         |                                     |       |           |       | 3.15               | 4.33  | 0.43 |       |       |       |       |       |       |       |       |       |       |
|                   |         |                                     |       |           |       | 3.54               | 4.92  | 0.51 |       |       |       |       |       |       |       |       |       |       |
|                   |         |                                     |       |           |       | 4.88               | 4.33  | 0.43 |       |       |       |       |       |       |       |       |       |       |
|                   |         |                                     | 5.31  | 4.53      | 0.43  |                    |       |      |       |       |       |       |       |       |       |       |       |       |
| MVE 890/2E-30A0   | C1      | 30A0                                | 10.79 | 60Hz      | 2.05  | Multiple Footprint |       |      | 4     | 5.91  | 6.81  | 0.59  | 3.11  | 5.91  | 6.54  | 5.28  |       |       |
|                   |         |                                     |       |           |       | 3.15               | 4.33  | 0.43 |       |       |       |       |       |       |       |       |       |       |
|                   |         |                                     |       |           |       | 3.54               | 4.92  | 0.51 |       |       |       |       |       |       |       |       |       |       |
|                   |         |                                     |       |           |       | 4.88               | 4.33  | 0.43 |       |       |       |       |       |       |       |       |       |       |
|                   |         |                                     | 5.31  | 4.53      | 0.43  |                    |       |      |       |       |       |       |       |       |       |       |       |       |
| MVE 1200/2E-40A0  | D1      | 40A0                                | 12.99 | 60Hz      | 3.07  | 4.13               | 5.51  | 0.51 | 4     | 6.69  | 7.72  | 0.59  | 3.62  | 6.65  | 6.54  | 6.22  |       |       |
| MVE 1700/2E-40A0  | D1      | 40A0                                | 12.99 | 60Hz      | 3.07  | 4.13               | 5.51  | 0.51 | 4     | 6.69  | 7.72  | 0.59  | 3.62  | 6.65  | 6.54  | 6.22  |       |       |
| MVE 1800/2E-50A0  | D1      | 50A0                                | 12.64 | 60Hz      | 2.44  | 4.72               | 6.69  | 0.67 | 4     | 8.19  | 8.27  | 0.87  | 3.78  | 7.28  | 7.56  | 6.69  |       |       |
| MVE 2300/2E-50A0  | D1      | 50A0                                | 12.64 | 60Hz      | 2.44  | 4.72               | 6.69  | 0.67 | 4     | 8.19  | 8.27  | 0.87  | 3.78  | 7.28  | 7.56  | 6.69  |       |       |
| MVE 3100/2E-50A0  | D1      | 50A0                                | 12.64 | 60Hz      | 2.44  | 4.72               | 6.69  | 0.67 | 4     | 8.19  | 8.27  | 0.87  | 3.78  | 7.28  | 7.56  | 6.69  |       |       |
| MVE 3500/2E-60A0  | D1      | 60A0                                | 15.83 | 60Hz      | 3.54  | 5.51               | 7.48  | 0.67 | 4     | 9.06  | 10.24 | 1.02  | 4.88  | 9.45  | 8.58  | 8.74  |       |       |
| MVE 4100/2E-60A0  | D1      | 60A0                                | 15.83 | 60Hz      | 3.54  | 5.51               | 7.48  | 0.67 | 4     | 9.06  | 10.24 | 1.02  | 4.88  | 9.45  | 8.58  | 8.74  |       |       |
| MVE 5100/2E-60A0  | D1      | 60A0                                | 15.83 | 60Hz      | 3.54  | 5.51               | 7.48  | 0.67 | 4     | 9.06  | 10.24 | 1.02  | 4.88  | 9.45  | 8.58  | 8.74  |       |       |
| MVE 7600/2E-75A1  | D1      | 75A1                                | 20.31 | 60Hz      | 4.61  | 6.10               | 10.04 | 0.98 | 4     | 11.97 | 12.36 | 1.18  | 5.79  | 11.22 | 10.91 | 10.43 |       |       |
| MVE 8800/2E-75A1  | D1      | 75A1                                | 20.31 | 60Hz      | 4.61  | 6.10               | 10.04 | 0.98 | 4     | 11.97 | 12.36 | 1.18  | 5.79  | 11.22 | 10.91 | 10.43 |       |       |
| MVE 11500/2E-75A1 | D1      | 75A1                                | 22.20 | 60Hz      | 20.31 | 5.55               | 4.61  | 6.10 | 10.04 | 0.93  | 4     | 11.97 | 12.36 | 1.18  | 5.79  | 11.22 | 10.91 | 10.43 |
| MVE 14400/2E-85A0 | D1      | 85A0                                | 24.57 | 60Hz      | 5.12  | 7.87               | 12.60 | 1.10 | 4     | 15.16 | 15.83 | 1.57  | 7.99  | 15.51 | 14.17 | 14.88 |       |       |
| MVE 20100/2E-85A0 | D1      | 85A0                                | 24.57 | 60Hz      | 5.12  | 7.87               | 12.60 | 1.10 | 4     | 15.16 | 15.83 | 1.57  | 7.99  | 15.51 | 14.17 | 14.88 |       |       |
| MVE 14400/2E-86A0 | D1      | 86A0                                | 24.57 | 60Hz      | 5.12  | 7.87               | 12.60 | 1.10 | 4     | 15.16 | 15.83 | 1.57  | 7.99  | 15.51 | 14.17 | 14.88 |       |       |
| MVE 20100/2E-86A0 | D1      | 86A0                                | 24.57 | 60Hz      | 5.12  | 7.87               | 12.60 | 1.10 | 4     | 15.16 | 15.83 | 1.57  | 7.99  | 15.51 | 14.17 | 14.88 |       |       |

STANDARD

EXPLOSION-PROOF

MILLING

SCREEN VIBRATOR

STAINLESS STEEL

FLANGED DRIVE

NOTE: Dimensions with coarse degree of accuracy related to UNI 22768/1

This information is provided without warranty, representation, inducement or licence of any kind. It is accurate to the best OLI knowledge or is obtained from sources believed to be accurate. OLI therefore assumes no legal responsibility. The latest and most updated information are available online.



» Class II Div.2 Group F, G T4  
 » Conform to UL 1004-1, UL 1004-3, UL60079-31, UL60079-0, CSA 60079-0, CSA 60079-31, CSA 22.2 N°100, CSA 22.2 N°77

# MVE STANDARD RANGE

## 4 POLES – 1500/1800 rpm



Class II Div.2: Temp. Class **T4**  
 II 2D Temp. Class: ● 100 °C ● 135 °C

\* Terminal Connections: **Y** High Voltage ; **Δ** Low Voltage

| Unbalance (inlb) |        | Model              | Centrifugal Force (lb) |        | Weight (lb) |       | ELECTRICAL SPECIFICATIONS |             |                          |       |                        |       |      |             |   |
|------------------|--------|--------------------|------------------------|--------|-------------|-------|---------------------------|-------------|--------------------------|-------|------------------------|-------|------|-------------|---|
|                  |        |                    | 50Hz                   | 60Hz   | 50Hz        | 60Hz  | Input Power (Hp)          |             | Standard Nominal Current |       | * Terminal Connections | Ia/In |      | Cable Gland |   |
| 50Hz             | 60Hz   | 60 Hz              |                        |        |             | 50Hz  | 60Hz                      | 50Hz (400V) | 60Hz (460V)              |       |                        | 50Hz  | 60Hz | Metric      |   |
| 0.86             | 0.86   | MVE 70/4E-10A0     | 55                     | 79     | 10          |       | 0.07                      | 0.05        | 0.31                     | 0.31  | Y                      | 2.2   | 2.2  | M16         | ● |
| 2.59             | 1.82   | MVE 200/4E-20A0    | 165                    | 168    | 16          |       | 0.09                      | 1.13        | 0.31                     | 0.25  | Y                      | 2.2   | 2.2  | M20         | ● |
| 3.34             | 2.34   | MVE 220/4E-20A0    | 214                    | 216    | 16          |       | 0.09                      | 1.13        | 0.31                     | 0.25  | Y                      | 2.2   | 2.2  | M20         | ● |
| 6.70             | 4.70   | MVE 400/4E-30A0    | 428                    | 432    | 26          |       | 0.16                      | 0.19        | 0.49                     | 0.50  | Y                      | 2.2   | 2.2  | M20         | ● |
| 14.51            | 10.15  | MVE 860/4E-40A0    | 926                    | 933    | 43          |       | 0.36                      | 0.43        | 0.84                     | 0.86  | Y                      | 2.7   | 2.7  | M20         | ● |
| 17.41            | 12.19  | MVE 1150/4E-40A0   | 1,111                  | 1,120  | 46          |       | 0.47                      | 0.54        | 1.06                     | 1.09  | Y                      | 3.0   | 2.9  | M20         | ● |
| 11.54            | 8.07   | MVE 750/4E-50A0    | 736                    | 741    | 49          |       | 0.83                      | 0.98        | 1.32                     | 1.20  | Y                      | 3.2   | 3.4  | M20         | ● |
| 24.67            | 17.08  | MVE 1530/4E-50A0   | 1,574                  | 1,570  | 60          |       | 0.83                      | 0.98        | 1.32                     | 1.20  | Y                      | 3.2   | 3.4  | M20         | ● |
| 24.67            | 17.08  | MVE 1540/4E-50A0   | 1,574                  | 1,570  | 60          |       | 0.83                      | 0.98        | 1.32                     | 1.20  | Y                      | 3.2   | 3.4  | M20         | ● |
| 32.81            | 22.96  | MVE 2100/4E-50A0   | 2,094                  | 2,110  | 73          |       | 0.86                      | 1.03        | 1.40                     | 1.35  | Y                      | 4.2   | 4.2  | M20         | ● |
| 38.06            | 26.64  | MVE 2300/4E-51A0   | 2,429                  | 2,447  | 77          | 63    | 0.86                      | 1.03        | 1.40                     | 1.35  | Y                      | 4.0   | 4.0  | M20         | ● |
| 47.12            | 33.30  | MVE 3100/4E-60A0   | 3,007                  | 3,060  | 140         | 133   | 0.94                      | 1.13        | 1.78                     | 1.78  | Y                      | 4.2   | 4.2  | M25         | ● |
| 59.59            | 39.92  | MVE 3880/4E-60A0   | 3,803                  | 3,668  | 149         | 141   | 1.52                      | 1.74        | 2.16                     | 2.09  | Y                      | 4.9   | 4.7  | M25         | ● |
| 81.46            | 59.62  | MVE 5340/4E-60A0   | 5,198                  | 5,478  | 169.7       | 153.2 | 2.11                      | 2.53        | 3.20                     | 3.20  | Y                      | 5.1   | 5.1  | M25         | ● |
| 88.34            | 58.87  | MVE 5700/4E-70A0   | 5,637                  | 5,410  | 187.4       | 164   | 2.36                      | 2.68        | 3.08                     | 3.00  | Y                      | 6.2   | 6.3  | M25         | ● |
| 107.93           | 73.68  | MVE 6840/4E-70A0   | 6,887                  | 6,770  | 184.1       | 172   | 2.55                      | 3.08        | 3.68                     | 3.30  | Y                      | 6.7   | 6.8  | M25         | ● |
| 133.11           | 88.86  | MVE 8400/4E-75A0   | 8,494                  | 8,166  | 276         | 249   | 2.95                      | 3.49        | 4.15                     | 4.15  | Y                      | 7.0   | 7.0  | M32         | ● |
| 148.97           | 104.58 | MVE 9480/4E-75A0   | 9,506                  | 9,610  | 299         | 265   | 3.35                      | 4.02        | 4.50                     | 4.60  | Y                      | 7.2   | 7.4  | M32         | ● |
| 189.84           | 131.83 | MVE 12260/4E-80A0  | 12,114                 | 12,114 | 399         | 373   | 3.86                      | 4.63        | 6.50                     | 5.50  | Y                      | 7.3   | 7.2  | M32         | ● |
| 250.33           | 172.45 | MVE 15850/4E-85A0  | 15,975                 | 15,847 | 522         | 509   | 5.36                      | 6.44        | 8.50                     | 8.70  | Δ                      | 7.0   | 7.1  | M32         | ● |
| 311.62           | 216.47 | MVE 19800/4E-85A0  | 19,885                 | 19,892 | 556         | 531   | 9.86                      | 11.40       | 13.40                    | 12.00 | Δ                      | 7.2   | 7.2  | M32         | ● |
| 251.71           | 176.22 | MVE 15850/4E-86A0  | 16,063                 | 16,193 | 522         | 509   | 8.05                      | 8.72        | 11.00                    | 10.80 | Δ                      | 4.7   | 4.5  | M32         | ● |
| 314.59           | 220.05 | MVE 19800/4E-86A0  | 20,075                 | 20,221 | 556         | 531   | 8.05                      | 8.72        | 11.00                    | 10.80 | Δ                      | 4.7   | 4.5  | M32         | ● |
| 347.27           | 255.34 | MVE 21000/4E-90A0  | 22,161                 | 23,464 | 661         | 631   | 7.24                      | 9.39        | 13.00                    | 13.00 | Δ                      | 6.7   | 6.6  | M32         | ● |
| 362.71           | 252.32 | MVE 21000/4E-91A0  | 23,146                 | 23,186 | 661         | 631   | 9.39                      | 11.00       | 13.10                    | 13.10 | Δ                      | 7.2   | 7.7  | M32         | ● |
| 407.65           | 284.45 | MVE 26100/4E-100A0 | 26,012                 | 26,131 | 981         | 930   | 11.94                     | 14.08       | 15.50                    | 15.50 | Δ                      | 7.0   | 7.0  | M32         | ● |
| 495.85           | 363.55 | MVE 33400/4E-100A0 | 31,640                 | 33,406 | 1014        | 974   | 15.42                     | 17.43       | 18.50                    | 18.50 | Δ                      | 8.0   | 8.0  | M32         | ● |



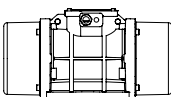
**UP TO SIZE 60 (NOT INCLUDED)**  
 60Hz masses = 50Hz masses adjusted at 70%  
 Except for model MVE 1100/15 - 1100/18



**ABOVE SIZE 60 (INCLUDED)**  
 Specific masses for 60Hz



- » II2D Ex tb IIIC Tx Db IP66
- » Equipment and protective system intended for use in potentially explosive atmospheres (Zone 21) - Directive 2014/34/UE
- » Compliance with Essential Health and Safety Requirements
- » IEC 60034-1, IEC EN 60079-0, IEC EN 60079-31



|                    |         | DIMENSIONAL SPECIFICATIONS (inches) |       |       |      |      |                    |           |      |       |       |       |      |      |       |       |       |
|--------------------|---------|-------------------------------------|-------|-------|------|------|--------------------|-----------|------|-------|-------|-------|------|------|-------|-------|-------|
| Model              | Drawing | Size                                | C     |       | M    |      | A                  | B         | Ø G  | Holes | D     | E     | F    | H    | I     | L     | N     |
|                    |         |                                     | 50Hz  | 60Hz  | 50Hz | 60Hz |                    |           |      | n°    |       |       |      |      |       |       |       |
| MVE 70/4E-10A0     | A       | 10A0                                | 8.39  |       | 1.77 |      | Multiple Footprint |           |      | 4     | 5.12  | 5.31  | 0.41 | 1.97 | 3.78  | 4.21  | 3.35  |
|                    |         |                                     |       |       |      |      | 2.44-2.91          | 4.17      | 0.35 |       |       |       |      |      |       |       |       |
|                    |         |                                     |       |       |      |      | 1.30               | 3.27-4.02 | 0.28 |       |       |       |      |      |       |       |       |
| MVE 200/4E-20A0    | B       | 20A0                                | 9.17  |       | 2.13 |      | 2.44-2.91          | 4.17      | 0.35 | 4     | 5.12  | 6.06  | 0.59 | 2.56 | 4.92  | 4.72  | 4.41  |
| MVE 220/4E-20A0    | B       | 20A0                                | 9.17  |       | 2.13 |      | 2.44-2.91          | 4.17      | 0.35 | 4     | 5.12  | 6.06  | 0.59 | 2.56 | 4.92  | 4.72  | 4.41  |
| MVE 400/4E-30A0    | C       | 30A0                                | 10.79 |       | 2.05 |      | Multiple Footprint |           |      | 4     | 5.91  | 6.81  | 0.59 | 3.11 | 5.91  | 6.54  | 5.28  |
|                    |         |                                     |       |       |      |      | 3.15               | 4.33      | 0.43 |       |       |       |      |      |       |       |       |
|                    |         |                                     |       |       |      |      | 3.54               | 4.92      | 0.51 |       |       |       |      |      |       |       |       |
|                    |         |                                     |       |       |      |      | 4.88               | 4.33      | 0.43 |       |       |       |      |      |       |       |       |
| MVE 860/4E-40A0    | D1      | 40A0                                | 12.99 |       | 3.07 |      | 4.13               | 5.51      | 0.51 | 4     | 6.69  | 7.72  | 0.79 | 3.62 | 6.85  | 6.54  | 6.30  |
| MVE 1150/4E-40A0   | D1      | 40A0                                | 12.99 |       | 3.07 |      | 4.13               | 5.51      | 0.51 | 4     | 6.69  | 7.72  | 0.79 | 3.62 | 6.85  | 6.54  | 6.30  |
| MVE 750/4E-50A0    | D1      | 50A0                                | 12.64 |       | 2.44 |      | 4.72               | 6.69      | 0.67 | 4     | 8.19  | 8.27  | 0.87 | 3.78 | 7.28  | 7.56  | 6.69  |
| MVE 1530/4E-50A0   | D1      | 50A0                                | 15.39 |       | 3.82 |      | 4.72               | 6.69      | 0.67 | 4     | 8.19  | 8.27  | 0.87 | 3.78 | 7.28  | 7.56  | 6.69  |
| MVE 1540/4E-50A0   | D1      | 50A0                                | 15.39 |       | 3.82 |      | 4.72               | 6.69      | 0.67 | 4     | 8.19  | 8.27  | 0.87 | 3.78 | 7.28  | 7.56  | 6.69  |
| MVE 2100/4E-50A0   | D1      | 50A0                                | 17.91 |       | 5.08 |      | 4.72               | 6.69      | 0.67 | 4     | 8.19  | 8.27  | 0.87 | 3.78 | 7.28  | 7.56  | 6.69  |
| MVE 2300/4E-51A0   | D1      | 51A0                                | 16.30 |       | 4.17 |      | 4.72               | 6.69      | 0.67 | 4     | 8.19  | 8.66  | 0.98 | 4.13 | 7.95  | 7.56  | 7.36  |
| MVE 3100/4E-60A0   | D1      | 60A0                                | 17.56 |       | 4.41 |      | 5.51               | 7.48      | 0.67 | 4     | 9.06  | 10.24 | 1.02 | 4.88 | 9.45  | 8.58  | 8.74  |
| MVE 3880/4E-60A0   | D1      | 60A0                                | 17.56 |       | 4.41 |      | 5.51               | 7.48      | 0.67 | 4     | 9.06  | 10.24 | 1.02 | 4.88 | 9.45  | 8.58  | 8.74  |
| MVE 5340/4E-60A0   | D1      | 60A0                                | 19.29 | 17.56 | 5.28 | 4.41 | 5.51               | 7.48      | 0.67 | 4     | 9.06  | 10.24 | 1.02 | 4.88 | 9.45  | 8.58  | 8.74  |
| MVE 5700/4E-70A0   | D1      | 70A0                                | 19.72 |       | 4.84 |      | 6.10               | 8.86      | 0.87 | 4     | 10.83 | 11.42 | 1.18 | 5.51 | 10.08 | 9.84  | 9.29  |
| MVE 6840/4E-70A0   | D1      | 70A0                                | 21.06 | 19.72 | 5.51 | 4.84 | 6.10               | 8.86      | 0.87 | 4     | 10.83 | 11.42 | 1.18 | 5.51 | 10.08 | 9.84  | 9.29  |
| MVE 8400/4E-75A0   | D1      | 75A0                                | 22.20 | 21.10 | 5.94 | 4.61 | 6.10               | 10.04     | 0.93 | 4     | 11.97 | 12.36 | 1.18 | 5.79 | 11.22 | 10.91 | 10.43 |
| MVE 9480/4E-75A0   | D1      | 75A0                                | 22.99 | 22.20 | 5.94 | 5.55 | 6.10               | 10.04     | 0.93 | 4     | 11.97 | 12.36 | 1.18 | 5.79 | 11.22 | 10.91 | 10.43 |
| MVE 12260/4E-80A0  | D1      | 80A0                                | 23.74 |       | 5.63 |      | 7.09               | 11.02     | 1.02 | 4     | 13.07 | 13.94 | 1.26 | 6.69 | 12.99 | 12.28 | 12.24 |
| MVE 15850/4E-85A0  | D1      | 85A0                                | 24.57 |       | 5.12 |      | 7.87               | 12.60     | 1.10 | 4     | 15.16 | 15.83 | 1.57 | 7.99 | 15.51 | 14.17 | 14.88 |
| MVE 19800/4E-85A0  | D1      | 85A0                                | 24.57 |       | 5.12 |      | 7.87               | 12.60     | 1.10 | 4     | 15.16 | 15.83 | 1.57 | 7.99 | 15.51 | 14.17 | 14.88 |
| MVE 15850/4E-86A0  | D1      | 86A0                                | 24.57 |       | 5.12 |      | 7.87               | 12.60     | 1.10 | 4     | 15.16 | 15.83 | 1.57 | 7.99 | 15.51 | 14.17 | 14.88 |
| MVE 19800/4E-86A0  | D1      | 86A0                                | 24.57 |       | 5.12 |      | 7.87               | 12.60     | 1.10 | 4     | 15.16 | 15.83 | 1.57 | 7.99 | 15.51 | 14.17 | 14.88 |
| MVE 21000/4E-90A0  | E1      | 90A0                                | 28.66 |       | 6.69 |      | 4.92               | 14.96     | 1.54 | 6     | 17.80 | 16.34 | 1.57 | 8.07 | 15.51 | 14.96 | 14.88 |
| MVE 21000/4E-91A0  | E1      | 91A0                                | 28.66 |       | 6.69 |      | 4.92               | 14.96     | 1.54 | 6     | 17.80 | 16.34 | 1.57 | 8.07 | 15.51 | 14.96 | 14.88 |
| MVE 26100/4E-100A0 | E       | 100                                 | 35.04 |       | 8.27 |      | 5.51               | 17.32     | 1.77 | 6     | 20.87 | 19.06 | 1.46 | 9.13 | 17.56 | 18.50 | 16.69 |
| MVE 33400/4E-100A0 | E       | 100                                 | 35.04 |       | 8.27 |      | 5.51               | 17.32     | 1.77 | 6     | 20.87 | 19.06 | 1.46 | 9.13 | 17.56 | 18.50 | 16.69 |

NOTE: Dimensions with coarse degree of accuracy related to UNI 22768/1

This information is provided without warranty, representation, inducement or licence of any kind. It is accurate to the best OLI knowledge or is obtained from sources believed to be accurate. OLI therefore assumes no legal responsibility. The latest and most updated information are available online.



» Class II Div.2 Group F, G T4  
 » Conform to UL 1004-1, UL 1004-3, UL60079-31, UL60079-0, CSA 60079-0, CSA 60079- 31, CSA 22.2 N°100, CSA 22.2 N°77

STANDARD

EXPLOSION-PROOF

MILLING

SCREEN VIBRATOR

STAINLESS STEEL

FLANGED DRIVE



# MVE STANDARD RANGE

## 6 POLES – 1000/1200 rpm



Class II Div.2: Temp. Class T4  
II 2D Temp. Class: ● 100 °C ● 135 °C

\* Terminal Connections: ▼ High Voltage ; ▲ Low Voltage

| Unbalance (inlb) |          | Model              | Centrifugal Force (lb) |        | Weight (lb) |      | ELECTRICAL SPECIFICATIONS |                  |       |                          |             |                        |       |      |             |
|------------------|----------|--------------------|------------------------|--------|-------------|------|---------------------------|------------------|-------|--------------------------|-------------|------------------------|-------|------|-------------|
| 50Hz             | 60Hz     |                    | 60Hz                   | 50Hz   | 60Hz        | 50Hz | 60Hz                      | Input Power (Hp) |       | Standard Nominal Current |             | * Terminal Connections | Ia/In |      | Cable Gland |
|                  |          |                    |                        |        |             |      |                           | 50Hz             | 60Hz  | 50Hz (400V)              | 60Hz (460V) |                        |       | 50Hz | 60Hz        |
| 4.12             | 2.86     | MVE 90/6E-30A0     | 117                    | 117    | 23          |      | 0.16                      | 0.19             | 0.30  | 0.40                     | Y           | 2.2                    | 2.2   | M20  | ●           |
| 8.16             | 5.72     | MVE 220/6E-30A0    | 231                    | 234    | 24          |      | 0.16                      | 0.19             | 0.30  | 0.40                     | Y           | 2.2                    | 2.2   | M20  | ●           |
| 14.54            | 10.15    | MVE 410/6E-40A0    | 412                    | 414    | 41          |      | 0.20                      | 0.24             | 0.65  | 0.63                     | Y           | 2.2                    | 2.2   | M20  | ●           |
| 24.71            | 17.30    | MVE 680/6E-50A0    | 701                    | 705    | 58          |      | 0.34                      | 0.40             | 0.67  | 0.64                     | Y           | 2.7                    | 2.7   | M20  | ●           |
| 39.88            | 27.92    | MVE 1100/6E-50A0   | 1,131                  | 1,140  | 74          |      | 0.74                      | 0.54             | 1.22  | 1.15                     | Y           | 3.0                    | 2.9   | M20  | ●           |
| 39.88            | 39.88    | MVE 1600/6E-51A0   | 1,131                  | 1,629  | 77          |      | 0.74                      | 0.54             | 1.22  | 1.15                     | Y           | 3.0                    | 2.9   | M20  | ●           |
| 59.62            | 47.13    | MVE 1730/6E-60A0   | 1,691                  | 1,925  | 133         | 128  | 1.01                      | 1.07             | 1.42  | 1.32                     | Y           | 3.4                    | 3.3   | M25  | ●           |
| 81.46            | 59.59    | MVE 2350/6E-60A0   | 2,310                  | 2,434  | 154         | 158  | 1.01                      | 1.07             | 1.42  | 1.32                     | Y           | 3.4                    | 3.3   | M25  | ●           |
| 123.59           | 85.29    | MVE 3090/6E-60A0   | 3,505                  | 3,483  | 185         | 161  | 1.21                      | 1.45             | 1.80  | 2.00                     | Y           | 3.5                    | 3.5   | M25  | ●           |
| 130.05           | 88.31    | MVE 3580/6E-70A0   | 3,688                  | 3,607  | 199         | 175  | 1.21                      | 1.45             | 2.40  | 2.30                     | Y           | 3.9                    | 3.8   | M25  | ●           |
| 161.92           | 107.96   | MVE 4740/6E-70A0   | 4,592                  | 4,409  | 231         | 200  | 2.01                      | 2.41             | 3.00  | 3.20                     | Y           | 4.5                    | 4.6   | M25  | ●           |
| 202.88           | 133.12   | MVE 5690/6E-75A0   | 5,754                  | 5,437  | 328         | 290  | 2.63                      | 2.82             | 4.10  | 4.00                     | Y           | 5.0                    | 5.0   | M32  | ●           |
| 234.52           | 164.80   | MVE 6620/6E-75A0   | 6,651                  | 6,731  | 343         | 304  | 2.95                      | 3.22             | 4.50  | 4.30                     | Y           | 5.2                    | 5.2   | M32  | ●           |
| 295.14           | 202.10   | MVE 8160/6E-75A0   | 8,371                  | 8,254  | 342         | 313  | 2.95                      | 3.22             | 4.50  | 4.30                     | Y           | 5.2                    | 5.2   | M32  | ●           |
| 295.30           | 189.85   | MVE 8450/6E-80A0   | 8,375                  | 7,754  | 475         | 429  | 3.35                      | 4.02             | 5.50  | 5.30                     | Y           | 6.1                    | 6.2   | M32  | ●           |
| 363.86           | 253.55   | MVE 10370/6E-80A0  | 10,320                 | 10,355 | 485         | 444  | 4.29                      | 5.23             | 6.50  | 6.95                     | Y           | 5.7                    | 5.9   | M32  | ●           |
| 403.58           | 284.10   | MVE 11500/6E-85A0  | 11,446                 | 11,603 | 582         | 547  | 5.10                      | 5.36             | 6.92  | 6.36                     | Y           | 5.7                    | 5.7   | M32  | ●           |
| 505.72           | 357.62   | MVE 14360/6E-85A0  | 14,343                 | 14,605 | 636         | 584  | 5.77                      | 6.71             | 7.76  | 7.81                     | Y           | 6.4                    | 6.2   | M32  | ●           |
| 623.26           | 403.56   | MVE 17750/6E-85A0  | 17,676                 | 16,482 | 682         | 604  | 7.38                      | 8.85             | 12.60 | 11.60                    | ▲           | 6.2                    | 6.4   | M32  | ●           |
| 694.61           | 505.74   | MVE 19120/6E-85A0  | 19,700                 | 20,655 | 709         | 642  | 8.31                      | 9.99             | 13.20 | 12.60                    | ▲           | 6.5                    | 6.4   | M32  | ●           |
| 622.40           | 403.56   | MVE 17750/6E-86A0  | 17,652                 | 16,482 | 682         | 604  | 6.17                      | 7.38             | 9.00  | 10.00                    | ▲           | 6.0                    | 6.2   | M32  | ●           |
| 693.58           | 505.74   | MVE 19120/6E-86A0  | 19,672                 | 20,655 | 709         | 642  | 6.17                      | 7.38             | 9.00  | 10.00                    | ▲           | 6.0                    | 6.2   | M32  | ●           |
| 776.23           | 538.19   | MVE 21400/6E-90A0  | 22,015                 | 21,980 | 825         | 766  | 8.18                      | 8.58             | 14.00 | 12.70                    | ▲           | 6.6                    | 6.6   | M32  | ●           |
| 1,011.22         | 715.03   | MVE 28660/6E-90A0  | 28,680                 | 29,202 | 905         | 802  | 10.06                     | 11.13            | 16.40 | 16.00                    | ▲           | 6.4                    | 6.5   | M32  | ●           |
| 782.53           | 538.19   | MVE 21400/6E-91A0  | 22,194                 | 21,980 | 823         | 766  | 8.58                      | 10.33            | 13.00 | 14.50                    | ▲           | 6.0                    | 6.0   | M32  | ●           |
| 892.75           | 621.96   | MVE 25100/6E-91A0  | 25,320                 | 25,401 | 891         | 797  | 8.58                      | 10.33            | 13.00 | 14.50                    | ▲           | 6.0                    | 6.0   | M32  | ●           |
| 1,003.04         | 715.03   | MVE 28660/6E-91A0  | 28,448                 | 29,202 | 970         | 866  | 10.73                     | 11.94            | 17.20 | 18.10                    | ▲           | 5.6                    | 6.3   | M32  | ●           |
| 977.80           | 672.9    | MVE 27400/6E-100A0 | 27,734                 | 27,482 | 1,151       | 1049 | 10.72                     | 12.74            | 15.0  | 15.0                     | ▲           | 5.0                    | 5.5   | M32  | ●           |
| 1,143.05         | 805.55   | MVE 32800/6E-105A0 | 32,421                 | 32,899 | 1,482       | 1389 | 13.53                     | 16.09            | 18.0  | 18.0                     | ▲           | 5.8                    | 5.8   | M32  | ●           |
| 1,397.55         | 931.95   | MVE 38000/6E-105A0 | 39,639                 | 38,060 | 1,640       | 1508 | 15.98                     | 19.04            | 21.0  | 21.0                     | ▲           | 5.6                    | 5.9   | M32  | ●           |
| 1,576.40         | 1,095.90 | MVE 44750/6E-105A0 | 44,720                 | 44,751 | 1,693       | 1605 | 16.04                     | 19.44            | 24.0  | 24.0                     | ▲           | 5.4                    | 5.6   | M32  | ●           |
| 1,765.20         | 1,138    | MVE 46400/6E-110A0 | 50,069                 | 46,471 | 2,019       | 1914 | 18.71                     | 22.80            | 28.0  | 28.0                     | ▲           | 4.8                    | 5.3   | M32  | ●           |
| 1,984.40         | 1,372.85 | MVE 56000/6E-110A0 | 56,288                 | 56,067 | 2,191       | 2066 | 18.71                     | 22.80            | 28.0  | 28.0                     | ▲           | 4.8                    | 5.3   | M32  | ●           |



UP TO SIZE 60 (NOT INCLUDED)  
60Hz masses = 50Hz masses adjusted at 70%

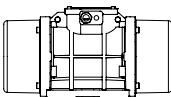


ABOVE SIZE 60 (INCLUDED)  
Specific masses for 60Hz



- » II2D Ex tb IIIC Tx Db IP66
- » Equipment and protective system intended for use in potentially explosive atmospheres (Zone 21) - Directive 2014/34/UE
- » Compliance with Essential Health and Safety Requirements
- » IEC 60034-1, IEC EN 60079-0, IEC EN 60079-31





| DIMENSIONAL SPECIFICATIONS (inches) |         |      |       |       |       |      |                    |       |      |       |       |       |      |       |       |       |       |
|-------------------------------------|---------|------|-------|-------|-------|------|--------------------|-------|------|-------|-------|-------|------|-------|-------|-------|-------|
| Model                               | Drawing | Size | C     |       | M     |      | A                  | B     | Ø G  | Holes | D     | E     | F    | H     | I     | L     | N     |
|                                     |         |      | 50Hz  | 60Hz  | 50Hz  | 60Hz |                    |       |      | n°    |       |       |      |       |       |       |       |
| MVE 90/6E-30A0                      | C       | 30A0 | 10.79 |       | 2.05  |      | Multiple Footprint |       |      | 4     | 5.91  | 6.81  | 0.59 | 3.11  | 5.91  | 6.54  | 5.28  |
|                                     |         |      |       |       |       |      | 3.15               | 4.33  | 0.43 |       |       |       |      |       |       |       |       |
|                                     |         |      |       |       |       |      | 3.54               | 4.92  | 0.51 |       |       |       |      |       |       |       |       |
|                                     |         |      |       |       |       |      | 4.88               | 4.33  | 0.43 |       |       |       |      |       |       |       |       |
| MVE 220/6E-30A0                     | C       | 30A0 | 11.97 |       | 2.64  |      | Multiple Footprint |       |      | 4     | 5.91  | 6.81  | 0.59 | 3.11  | 5.91  | 6.54  | 5.28  |
|                                     |         |      |       |       |       |      | 3.15               | 4.33  | 0.43 |       |       |       |      |       |       |       |       |
|                                     |         |      |       |       |       |      | 3.54               | 4.92  | 0.51 |       |       |       |      |       |       |       |       |
|                                     |         |      |       |       |       |      | 4.88               | 4.33  | 0.43 |       |       |       |      |       |       |       |       |
| MVE 410/6E-40A0                     | D1      | 40A0 | 12.99 |       | 3.07  |      | 4.13               | 5.51  | 0.51 | 4     | 6.69  | 7.72  | 0.79 | 3.62  | 6.85  | 6.54  | 6.30  |
| MVE 680/6E-50A0                     | D1      | 50A0 | 15.39 |       | 3.82  |      | 4.72               | 6.69  | 0.67 | 4     | 8.19  | 8.27  | 0.87 | 3.78  | 7.28  | 7.56  | 6.69  |
| MVE 1100/6E-50A0                    | D1      | 50A0 | 17.91 |       | 5.08  |      | 4.72               | 6.69  | 0.67 | 4     | 8.19  | 8.27  | 0.87 | 3.78  | 7.28  | 7.56  | 6.69  |
| MVE 1600/6E-51A0                    | D1      | 51A0 | 17.91 |       | 5.08  |      | 4.72               | 6.69  | 0.67 | 4     | 8.19  | 8.27  | 0.87 | 3.78  | 7.28  | 7.56  | 6.69  |
| MVE 1730/6E-60A0                    | D1      | 60A0 | 17.56 |       | 4.41  |      | 5.51               | 7.48  | 0.67 | 4     | 9.06  | 10.24 | 1.02 | 4.88  | 9.45  | 8.58  | 8.74  |
| MVE 2350/6E-60A0                    | D1      | 60A0 | 19.29 | 17.56 | 5.28  | 4.41 | 5.51               | 7.48  | 0.67 | 4     | 9.06  | 10.24 | 1.02 | 4.88  | 9.45  | 8.58  | 8.74  |
| MVE 3090/6E-60A0                    | D1      | 60A0 | 22.28 | 19.29 | 6.77  | 5.28 | 5.51               | 7.48  | 0.67 | 4     | 9.06  | 10.24 | 1.02 | 4.88  | 9.45  | 8.58  | 8.74  |
| MVE 3580/6E-70A0                    | D1      | 70A0 | 22.17 | 19.72 | 6.06  | 4.84 | 6.10               | 8.86  | 0.87 | 4     | 10.83 | 11.42 | 1.18 | 5.51  | 10.08 | 9.84  | 9.29  |
| MVE 4740/6E-70A0                    | D1      | 70A0 | 24.53 | 22.17 | 7.24  | 6.06 | 6.10               | 8.86  | 0.87 | 4     | 10.83 | 11.42 | 1.18 | 5.51  | 10.08 | 9.84  | 9.29  |
| MVE 5690/6E-75A0                    | D1      | 75A0 | 27.24 | 22.99 | 8.07  | 5.94 | 6.10               | 10.04 | 0.93 | 4     | 11.97 | 12.36 | 1.18 | 5.79  | 11.22 | 10.91 | 10.43 |
| MVE 6620/6E-75A0                    | D1      | 75A0 | 27.24 |       | 8.07  |      | 6.10               | 10.04 | 0.93 | 4     | 11.97 | 12.36 | 1.18 | 5.79  | 11.22 | 10.91 | 10.43 |
| MVE 8160/6E-75A0                    | D1      | 75A0 | 28.90 | 27.24 | 8.90  | 8.07 | 6.10               | 10.04 | 0.93 | 4     | 11.97 | 12.36 | 1.18 | 5.79  | 11.22 | 10.91 | 10.43 |
| MVE 8450/6E-80A0                    | D1      | 80A0 | 26.89 | 23.74 | 7.20  | 5.63 | 7.09               | 11.02 | 1.02 | 4     | 13.07 | 13.94 | 1.26 | 6.69  | 12.99 | 12.28 | 12.24 |
| MVE 10370/6E-80A0                   | D1      | 80A0 | 28.86 | 26.89 | 8.19  | 7.20 | 7.09               | 11.02 | 1.02 | 4     | 13.07 | 13.94 | 1.26 | 6.69  | 12.99 | 12.28 | 12.24 |
| MVE 11500/6E-85A0                   | D1      | 85A0 | 27.72 | 24.57 | 6.69  | 5.12 | 7.87               | 12.60 | 1.10 | 4     | 15.16 | 15.83 | 1.57 | 7.99  | 15.51 | 14.17 | 14.88 |
| MVE 14360/6E-85A0                   | D1      | 85A0 | 27.72 |       | 6.69  |      | 7.87               | 12.60 | 1.10 | 4     | 15.16 | 15.83 | 1.57 | 7.99  | 15.51 | 14.17 | 14.88 |
| MVE 17750/6E-85A0                   | D1      | 85A0 | 30.47 | 27.72 | 8.07  | 6.69 | 7.87               | 12.60 | 1.10 | 4     | 15.16 | 15.83 | 1.57 | 7.99  | 15.51 | 14.17 | 14.88 |
| MVE 19120/6E-85A0                   | D1      | 85A0 | 30.47 | 27.72 | 8.07  | 6.69 | 7.87               | 12.60 | 1.10 | 4     | 15.16 | 15.83 | 1.57 | 7.99  | 15.51 | 14.17 | 14.88 |
| MVE 17750/6E-86A0                   | D1      | 86A0 | 30.47 |       | 8.07  |      | 7.87               | 12.60 | 1.10 | 4     | 15.16 | 15.83 | 1.57 | 7.99  | 15.51 | 14.17 | 14.88 |
| MVE 19120/6E-86A0                   | D1      | 86A0 | 30.47 |       | 8.07  |      | 7.87               | 12.60 | 1.10 | 4     | 15.16 | 15.83 | 1.57 | 7.99  | 15.51 | 14.17 | 14.88 |
| MVE 21400/6E-90A0                   | E1      | 90A0 | 35.75 | 31.42 | 10.24 | 8.07 | 4.92               | 14.96 | 1.54 | 6     | 17.80 | 16.34 | 1.57 | 8.07  | 15.51 | 14.96 | 14.88 |
| MVE 28660/6E-90A0                   | E1      | 90A0 | 37.32 | 31.42 | 11.02 | 8.07 | 4.92               | 14.96 | 1.54 | 6     | 17.80 | 16.34 | 1.57 | 8.07  | 15.51 | 14.96 | 14.88 |
| MVE 21400/6E-91A0                   | E1      | 91A0 | 35.75 |       | 10.24 |      | 4.92               | 14.96 | 1.54 | 6     | 17.80 | 16.34 | 1.57 | 8.07  | 15.51 | 14.96 | 14.88 |
| MVE 25100/6E-91A0                   | E1      | 91A0 | 35.75 |       | 10.24 |      | 4.92               | 14.96 | 1.54 | 6     | 17.80 | 16.34 | 1.57 | 8.07  | 15.51 | 14.96 | 14.88 |
| MVE 28660/6E-91A0                   | E1      | 91A0 | 37.32 |       | 11.02 |      | 4.92               | 14.96 | 1.54 | 6     | 17.80 | 16.34 | 1.57 | 8.07  | 15.51 | 14.96 | 14.88 |
| MVE 27400/6E-100A0                  | E       | 100  | 40.16 |       | 10.83 |      | 5.51               | 17.32 | 1.77 | 6     | 20.87 | 19.06 | 1.46 | 9.13  | 17.56 | 18.50 | 16.69 |
| MVE 32800/6E-105A0                  | H       | 105  | 38.58 |       | 8.27  |      | 5.51               | 18.90 | 1.77 | 8     | 22.44 | 21.34 | 1.89 | 10.55 | 20.08 | 22.05 | 19.29 |
| MVE 38000/6E-105A0                  | H       | 105  | 41.73 |       | 9.84  |      | 5.51               | 18.90 | 1.77 | 8     | 22.44 | 21.34 | 1.89 | 10.55 | 20.08 | 22.05 | 19.29 |
| MVE 44750/6E-105A0                  | H       | 105  | 41.73 |       | 9.84  |      | 5.51               | 18.90 | 1.77 | 8     | 22.44 | 21.34 | 1.89 | 10.55 | 20.08 | 22.05 | 19.29 |
| MVE 46400/6E-110A0                  | H       | 110  | 44.49 |       | 11.22 |      | 5.51               | 19.47 | 1.77 | 8     | 24.02 | 23.39 | 1.65 | 11.69 | 22.05 | 22.05 | 20.87 |
| MVE 56000/6E-110A0                  | H       | 110  | 44.49 |       | 11.22 |      | 5.51               | 19.47 | 1.77 | 8     | 24.02 | 23.39 | 1.65 | 11.69 | 22.05 | 22.05 | 20.87 |

STANDARD

EXPLOSION-PROOF

MILLING

SCREEN VIBRATOR

STAINLESS STEEL

FLANGED DRIVE

NOTE: Dimensions with coarse degree of accuracy related to UNI 22768/1

This information is provided without warranty, representation, inducement or licence of any kind. It is accurate to the best OLI knowledge or is obtained from sources believed to be accurate. OLI therefore assumes no legal responsibility. The latest and most updated information are available online.



» Class II Div.2 Group F, G T4  
 » Conform to UL 1004-1, UL 1004-3, UL60079-31, UL60079-0, CSA 60079-0, CSA 60079- 31, CSA 22.2 N°100, CSA 22.2 N°77



# MVE STANDARD RANGE

## 8 POLES – 750/900 rpm



Class II Div.2: Temp. Class **T4**  
II 2D Temp. Class: ● 100 °C ● 135 °C

\* Terminal Connections: **Y** High Voltage ; **Δ** Low Voltage

| Unbalance (inlb) |          | Model              | Centrifugal Force (lb) |        | Weight (lb) |       | ELECTRICAL SPECIFICATIONS |       |                          |             |                        |       |      |             |
|------------------|----------|--------------------|------------------------|--------|-------------|-------|---------------------------|-------|--------------------------|-------------|------------------------|-------|------|-------------|
|                  |          |                    | 50Hz                   | 60Hz   | 50Hz        | 60Hz  | Input Power (Hp)          |       | Standard Nominal Current |             | * Terminal Connections | Ia/In |      | Cable Gland |
| 50Hz             | 60Hz     | 60Hz               | 50Hz                   | 60Hz   | 50Hz        | 60Hz  | 50Hz                      | 60Hz  | 50Hz (400V)              | 60Hz (460V) |                        | 50Hz  | 60Hz |             |
| 14.49            |          | MVE 330/8E-40A     | 231                    | 333    | 45          |       | 0.31                      | 0.34  | 1.14                     | 1.14        | Y                      | 1.7   | 1.7  | M20 ●       |
| 24.71            |          | MVE 550/8E-50A     | 395                    | 567    | 63          |       | 0.34                      | 0.40  | 0.90                     | 0.89        | Y                      | 1.9   | 1.9  | M20 ●       |
| 36.47            |          | MVE 880/8E-51A0    | 582                    | 838    | 75          |       | 0.34                      | 0.40  | 0.90                     | 0.89        | Y                      | 2.1   | 2.1  | M20 ●       |
| 59.59            |          | MVE 1430/8E-60A0   | 950                    | 1,369  | 140         |       | 0.50                      | 0.60  | 1.20                     | 1.20        | Y                      | 2.4   | 2.4  | M25 ●       |
| 81.47            |          | MVE 2000/8E-60A0   | 1,299                  | 1,872  | 153         |       | 0.74                      | 0.72  | 1.23                     | 1.29        | Y                      | 2.7   | 2.7  | M25 ●       |
| 130.03           |          | MVE 2900/8E-70A0   | 2,075                  | 2,987  | 199         |       | 1.01                      | 1.21  | 2.20                     | 2.20        | Y                      | 3.2   | 3.2  | M25 ●       |
| 202.87           |          | MVE 4620/8E-75A0   | 3,236                  | 4,661  | 332         |       | 1.34                      | 1.61  | 2.81                     | 2.89        | Y                      | 4.4   | 4.3  | M32 ●       |
| 295.29           |          | MVE 6820/8E-80A0   | 4,711                  | 6,784  | 443         |       | 2.68                      | 3.08  | 4.50                     | 4.40        | Y                      | 4.2   | 4.2  | M32 ●       |
| 363.90           |          | MVE 8360/8E-80A0   | 5,805                  | 8,360  | 483         |       | 3.35                      | 4.02  | 6.00                     | 6.00        | Y                      | 4.1   | 4.2  | M32 ●       |
| 403.53           |          | MVE 9240/8E-85A0   | 6,437                  | 9,270  | 591         |       | 3.89                      | 4.56  | 6.50                     | 6.50        | Y                      | 4.0   | 3.9  | M32 ●       |
| 505.74           |          | MVE 11660/8E-85A0  | 8,069                  | 11,618 | 637         |       | 4.96                      | 5.77  | 8.00                     | 8.20        | Y                      | 4.0   | 4.4  | M32 ●       |
| 623.20           |          | MVE 14300/8E-85A0  | 9,943                  | 14,317 | 679         |       | 5.10                      | 5.63  | 8.78                     | 8.30        | Y                      | 3.8   | 4.2  | M32 ●       |
| 955.05           |          | MVE 22000/8E-90A0  | 15,236                 | 21,940 | 931         |       | 9.12                      | 10.06 | 13.50                    | 12.50       | Δ                      | 3.7   | 4.4  | M32 ●       |
| 1,003.04         |          | MVE 22000/8E-91A0  | 16,001                 | 23,042 | 931         |       | 8.05                      | 9.39  | 14.40                    | 14.00       | Δ                      | 4.7   | 4.7  | M32 ●       |
| 1,230.05         | 1,107.98 | MVE 25400/8E-100A0 | 19,630                 | 25,454 | 1,259       | 1,219 | 10.06                     | 10.73 | 13.5                     | 13.5        | Δ                      | 3.8   | 4.0  | M32 ●       |
| 1,611.50         | 1,397.55 | MVE 32100/8E-105A0 | 25,708                 | 32,106 | 1,656       | 1,598 | 12.07                     | 14.21 | 19.0                     | 19.0        | Δ                      | 4.5   | 5.0  | M32 ●       |
| 1,910.07         | 1,701.55 | MVE 39000/8E-105A0 | 30,472                 | 39,085 | 1,790       | 1,746 | 12.20                     | 14.75 | 20.0                     | 20.0        | Δ                      | 5.3   | 5.8  | M32 ●       |
| 2,542.10         | 2,169.55 | MVE 49800/8E-110A0 | 40,554                 | 49,846 | 2,165       | 2,066 | 18.51                     | 22.13 | 28.0                     | 28.0        | Δ                      | 5.6   | 5.2  | M32 ●       |
| -                | 2,542.10 | MVE 58300/8E-110A0 | -                      | 58,398 | -           | 2,165 | -                         | 22.13 | -                        | 28.0        | Δ                      | -     | 5.2  | M32 ●       |

SIZE 40A0



SIZE 50A0



SIZE 60A0



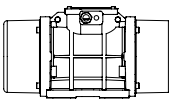
UP TO SIZE 90 (INCLUDED)  
60Hz masses = 50Hz masses adjusted at 100%



ABOVE SIZE 90 (NOT INCLUDED)  
Specific masses for 60Hz



- » II2D Ex tb IIIC Tx Db IP66
- » Equipment and protective system intended for use in potentially explosive atmospheres (Zone 21) - Directive 2014/34/UE
- » Compliance with Essential Health and Safety Requirements
- » IEC 60034-1, IEC EN 60079-0, IEC EN 60079-31



|                    |         | DIMENSIONAL SPECIFICATIONS (inches) |           |           |      |       |      |       |       |       |      |       |       |       |       |
|--------------------|---------|-------------------------------------|-----------|-----------|------|-------|------|-------|-------|-------|------|-------|-------|-------|-------|
| Model              | Drawing | Size                                | C         | M         | A    | B     | Ø G  | Holes | D     | E     | F    | H     | I     | L     | N     |
|                    |         |                                     | 50Hz-60Hz | 50Hz-60Hz |      |       |      | n°    |       |       |      |       |       |       |       |
| MVE 330/8E-40A     | D1      | 40A0                                | 12.99     | 3.07      | 4.13 | 5.51  | 0.51 | 4     | 6.69  | 7.72  | 0.79 | 3.62  | 6.85  | 6.54  | 6.30  |
| MVE 550/8E-50A     | D1      | 50A0                                | 15.39     | 3.82      | 4.72 | 6.69  | 0.67 | 4     | 8.19  | 8.27  | 0.87 | 3.78  | 7.28  | 7.56  | 6.69  |
| MVE 880/8E-51A0    | D1      | 51A0                                | 17.91     | 5.08      | 4.72 | 6.69  | 0.67 | 4     | 8.19  | 8.27  | 0.87 | 3.78  | 7.28  | 7.56  | 6.69  |
| MVE 1430/8E-60A0   | D1      | 60A0                                | 17.56     | 4.41      | 5.51 | 7.48  | 0.67 | 4     | 9.06  | 10.24 | 1.02 | 4.88  | 9.45  | 8.58  | 8.74  |
| MVE 2000/8E-60A0   | D1      | 60A0                                | 19.29     | 5.28      | 5.51 | 7.48  | 0.67 | 4     | 9.06  | 10.24 | 1.02 | 4.88  | 9.45  | 8.58  | 8.74  |
| MVE 2900/8E-70A0   | D1      | 70A0                                | 22.17     | 6.06      | 6.10 | 8.86  | 0.87 | 4     | 10.83 | 11.42 | 1.18 | 5.51  | 10.08 | 9.84  | 9.29  |
| MVE 4620/8E-75A0   | D1      | 75A0                                | 27.24     | 8.07      | 6.10 | 10.04 | 0.93 | 4     | 11.97 | 12.36 | 1.18 | 5.79  | 11.22 | 10.91 | 10.43 |
| MVE 6820/8E-80A0   | D1      | 80A0                                | 26.89     | 7.20      | 7.09 | 11.02 | 1.02 | 4     | 13.07 | 13.94 | 1.26 | 6.69  | 12.99 | 12.28 | 12.24 |
| MVE 8360/8E-80A0   | D1      | 80A0                                | 28.86     | 8.19      | 7.09 | 11.02 | 1.02 | 4     | 13.07 | 13.94 | 1.26 | 6.69  | 12.99 | 12.28 | 12.24 |
| MVE 9240/8E-85A0   | D1      | 85A0                                | 27.72     | 6.69      | 7.87 | 12.60 | 1.10 | 4     | 15.16 | 15.83 | 1.57 | 7.99  | 15.51 | 14.17 | 14.88 |
| MVE 11660/8E-85A0  | D1      | 85A0                                | 27.72     | 6.69      | 7.87 | 12.60 | 1.10 | 4     | 15.16 | 15.83 | 1.57 | 7.99  | 15.51 | 14.17 | 14.88 |
| MVE 14300/8E-85A0  | D1      | 85A0                                | 30.47     | 8.07      | 7.87 | 12.60 | 1.10 | 4     | 15.16 | 15.83 | 1.57 | 7.99  | 15.51 | 14.17 | 14.88 |
| MVE 22000/8E-90A0  | E1      | 90A0                                | 37.32     | 11.02     | 4.92 | 14.96 | 1.54 | 6     | 17.80 | 16.34 | 1.57 | 8.07  | 15.51 | 14.96 | 14.88 |
| MVE 22000/8E-91A0  | E1      | 91A0                                | 37.32     | 11.02     | 4.92 | 14.96 | 1.54 | 6     | 17.80 | 16.34 | 1.57 | 8.07  | 15.51 | 14.96 | 14.88 |
| MVE 25400/8E-100A0 | E       | 100                                 | 40.16     | 10.83     | 5.51 | 17.32 | 1.77 | 6     | 20.87 | 19.06 | 1.46 | 9.13  | 17.56 | 18.50 | 16.69 |
| MVE 32100/8E-105A0 | H       | 105                                 | 41.73     | 9.84      | 5.51 | 18.90 | 1.77 | 8     | 22.44 | 21.34 | 1.89 | 10.55 | 20.08 | 22.05 | 19.29 |
| MVE 39000/8E-105A0 | H       | 105                                 | 44.09     | 11.02     | 5.51 | 18.90 | 1.77 | 8     | 22.44 | 21.34 | 1.89 | 10.55 | 20.08 | 22.05 | 19.29 |
| MVE 49800/8E-110A0 | H       | 110                                 | 44.49     | 11.22     | 5.51 | 20.47 | 1.77 | 8     | 24.02 | 23.39 | 1.65 | 11.69 | 22.05 | 22.05 | 20.87 |
| MVE 58300/8E-110A0 | H       | 110                                 | 44.49     | 11.22     | 5.51 | 20.47 | 1.77 | 8     | 24.02 | 23.39 | 1.65 | 11.69 | 22.05 | 22.05 | 20.87 |

STANDARD

EXPLOSION-PROOF

MILLING

SCREEN VIBRATOR

STAINLESS STEEL

FLANGED DRIVE

Notes:

NOTE: Dimensions with coarse degree of accuracy related to UNI 22768/1

This information is provided without warranty, representation, inducement or licence of any kind. It is accurate to the best OLI knowledge or is obtained from sources believed to be accurate. OLI therefore assumes no legal responsibility. The latest and most updated information are available online.



- » Class II Div.2 Group F, G T4
- » Conform to UL 1004-1, UL 1004-3, UL60079-31, UL60079-0, CSA 60079-0, CSA 60079-31, CSA 22.2 N°100, CSA 22.2 N°77



# MVE STANDARD RANGE

## 2 POLES SINGLE-PHASE - 3000/3600 rpm



Class II Div.2: Temp. Class **T4**  
II 2D Temp. Class: ● 100 °C ● 135 °C

| Unbalance (inlb) |      | Model             | Centrifugal Force (lb) |      | Weight (lb) |      | ELECTRICAL SPECIFICATIONS |      |                       |             |             |             |             |      |   |
|------------------|------|-------------------|------------------------|------|-------------|------|---------------------------|------|-----------------------|-------------|-------------|-------------|-------------|------|---|
|                  |      |                   | 50Hz                   | 60Hz | 50Hz        | 60Hz | Input Power (Hp)          |      | Nominal Current A max |             | Cable Gland | Capacitor * |             |      |   |
| 50Hz             | 60Hz | 60Hz              | 50Hz                   | 60Hz | 50Hz        | 60Hz | 50Hz                      | 60Hz | 50Hz (230V)           | 60Hz (115V) | Metric      | 50Hz (230V) | 60Hz (115V) |      |   |
| 0.57             | 0.43 | MVE 160/2E-10A0-M | 146                    | 157  | 9           |      |                           | 0.11 | 0.12                  | 0.43        | 1.03        | M16         | 3.0         | 6.3  | ● |
| 0.85             | 0.57 | MVE 220/2E-10A0-M | 216                    | 209  | 11          |      |                           | 0.13 | 0.15                  | 0.54        | 1.30        | M16         | 4.0         | 8.0  | ● |
| 1.61             | 1.13 | MVE 440/2E-20A0-M | 412                    | 417  | 15          |      |                           | 0.24 | 0.28                  | 1.14        | 2.62        | M20         | 8.0         | 16.0 | ● |
| 1.61             | 1.13 | MVE 440/2E-23A0-M | 412                    | 417  | 16          |      |                           | 0.24 | 0.28                  | 1.14        | 2.62        | M20         | 8.0         | 16.0 | ● |
| 2.77             | 1.94 | MVE 690/2E-30A0-M | 708                    | 712  | 22          |      |                           | 0.36 | 0.38                  | 1.58        | 3.43        | M20         | 12.5        | 25.0 | ● |

\* NOTE: Capacitor not supplied with vibrator (to be ordered separately)

SIZE 10A0

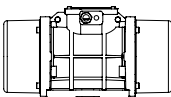


SIZE 20A0



SIZE 30A0





|                   |         | DIMENSIONAL SPECIFICATIONS (inches) |       |      |                    |           |      |   |      |       |      |      |      |      |      |   |   |
|-------------------|---------|-------------------------------------|-------|------|--------------------|-----------|------|---|------|-------|------|------|------|------|------|---|---|
| Model             | Drawing | Size                                | C     |      | M                  |           | A    | B | Ø G  | Holes | D    | E    | F    | H    | I    | L | N |
|                   |         |                                     | 50Hz  | 60Hz | 50Hz               | 60Hz      |      |   |      | n°    |      |      |      |      |      |   |   |
| MVE 160/2E-10A0-M | A1      | 10A0                                | 8.39  | 1.77 | Multiple Footprint |           |      | 4 | 5.12 | 5.31  | 0.41 | 1.97 | 3.78 | 4.21 | 3.35 |   |   |
|                   |         |                                     |       |      | 2.44-2.91          | 4.17      | 0.35 |   |      |       |      |      |      |      |      |   |   |
|                   |         |                                     |       |      | 1.30               | 3.27-4.02 | 0.28 |   |      |       |      |      |      |      |      |   |   |
| MVE 220/2E-10A0-M | A1      | 10A0                                | 8.39  | 1.77 | Multiple Footprint |           |      | 4 | 5.12 | 5.31  | 0.41 | 1.97 | 3.78 | 4.21 | 3.35 |   |   |
|                   |         |                                     |       |      | 2.44-2.91          | 4.17      | 0.35 |   |      |       |      |      |      |      |      |   |   |
|                   |         |                                     |       |      | 1.30               | 3.27-4.02 | 0.28 |   |      |       |      |      |      |      |      |   |   |
| MVE 440/2E-20A0-M | B1      | 20A0                                | 9.17  | 2.13 | 2.44-2.91          | 4.17      | 0.35 | 4 | 5.12 | 6.06  | 0.59 | 2.56 | 4.92 | 4.72 | 4.41 |   |   |
| MVE 440/2E-23A0-M | G       | 23A0                                | 8.74  | 2.17 | Multiple Footprint |           |      | 4 | 6.46 | 5.51  | 0.98 | 3.23 | 4.57 | 6.26 | 4.33 |   |   |
|                   |         |                                     |       |      | 2.44-2.91          | 4.17      | 0.35 |   |      |       |      |      |      |      |      |   |   |
|                   |         |                                     |       |      | 2.56               | 5.51      | 0.51 |   |      |       |      |      |      |      |      |   |   |
|                   |         |                                     |       |      | 4.53               | 5.31      | 0.43 |   |      |       |      |      |      |      |      |   |   |
| MVE 690/2E-30A0-M | C1      | 30A0                                | 10.00 | 1.65 | Multiple Footprint |           |      | 4 | 6.06 | 6.81  | 0.59 | 3.11 | 5.91 | 6.54 | 5.28 |   |   |
|                   |         |                                     |       |      | 3.15               | 4.33      | 0.43 |   |      |       |      |      |      |      |      |   |   |
|                   |         |                                     |       |      | 3.54               | 4.92      | 0.51 |   |      |       |      |      |      |      |      |   |   |
|                   |         |                                     |       |      | 4.88               | 4.33      | 0.43 |   |      |       |      |      |      |      |      |   |   |
|                   |         |                                     |       |      |                    |           |      |   |      |       |      |      |      |      |      |   |   |

Notes:

.....

.....

.....

.....

NOTE: Dimensions with coarse degree of accuracy related to UNI 22768/1

This information is provided without warranty, representation, inducement or licence of any kind. It is accurate to the best OLI knowledge or is obtained from sources believed to be accurate. OLI therefore assumes no legal responsibility. The latest and most updated information are available online.





# MVE STANDARD RANGE

## MVE-MICRO – 3000/3600 rpm



Class II Div.2: Temp. Class **T4**  
II 3D Temp. Class: ● 100 °C ● 135 °C

\* Terminal Connections: ▼ High Voltage ; ▲ Low Voltage

### THREE-PHASE

| Unbalance (inlb) |      | Model            | Centrifugal Force (lb) |      | Weight (lb) |      | ELECTRICAL SPECIFICATIONS |             |                       |      |        |                        |             |   |
|------------------|------|------------------|------------------------|------|-------------|------|---------------------------|-------------|-----------------------|------|--------|------------------------|-------------|---|
|                  |      |                  | 50Hz                   | 60Hz | 50Hz        | 60Hz | Input Power (Hp)          |             | Nominal Current A max |      |        | * Terminal Connections | Cable Gland |   |
| 50Hz             | 60Hz | 60Hz             | 50Hz                   | 60Hz | 50Hz        | 60Hz | 50Hz (230V)               | 50Hz (400V) | 60Hz (460V)           |      | Metric |                        |             |   |
| 0.17             |      | MVE 21/36E-MICRO | 44                     | 64   | 4           |      | 0.05                      | 0.05        | 0.21                  | 0.12 | 0.12   | Y                      | M16         | ● |
| 0.39             |      | MVE41/36E-MICRO  | 99                     | 143  | 5           |      | 0.08                      | 0.08        | 0.30                  | 0.18 | 0.18   | Y                      | M16         | ● |

### SINGLE-PHASE

| Unbalance (inlb) |      | Model              | Centrifugal Force (lb) |      | Weight (lb) |      | ELECTRICAL SPECIFICATIONS |             |                       |      |               |   |
|------------------|------|--------------------|------------------------|------|-------------|------|---------------------------|-------------|-----------------------|------|---------------|---|
|                  |      |                    | 50Hz                   | 60Hz | 50Hz        | 60Hz | Input Power (Hp)          |             | Nominal Current A max |      | Cable Gland * |   |
| 50Hz             | 60Hz | 60Hz               | 50Hz                   | 60Hz | 50Hz        | 60Hz | 50Hz (230V)               | 60Hz (115V) | Metric                |      |               |   |
| 0.03             |      | MVE 3/36E-MICRO-M  | 9                      | 13   | 3           |      | 0.04                      | 0.05        | 0.30                  | 0.80 | M16           | ● |
| 0.05             |      | MVE 6/36E-MICRO-M  | 13                     | 20   | 3           |      | 0.04                      | 0.05        | 0.30                  | 0.80 | M16           | ● |
| 0.17             |      | MVE 21/36E-MICRO-M | 44                     | 64   | 4           |      | 0.05                      | 0.09        | 0.20                  | 0.80 | M16           | ● |
| 0.39             |      | MVE 41/36E-MICRO-M | 99                     | 143  | 5           |      | 0.07                      | 0.09        | 0.25                  | 0.80 | M16           | ● |

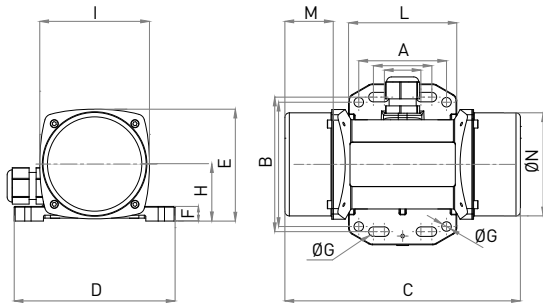
MICRO



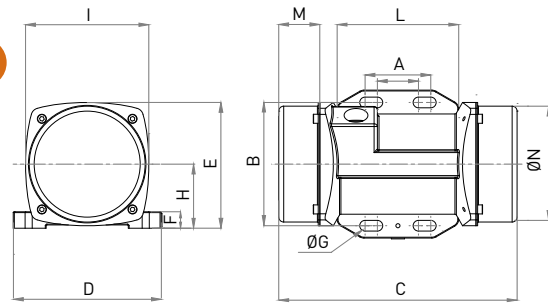
NOTE: Capacitor integrated in the cable



F



I



DIMENSIONAL SPECIFICATIONS (inches)

| Model            | Drawing | C    | M    | Multiple Footprint |      |      | Holes | D    | E    | F    | H    | I    | L    | N    |
|------------------|---------|------|------|--------------------|------|------|-------|------|------|------|------|------|------|------|
|                  |         | 60Hz | 60Hz | 0.98-1.57          | 3.62 | 0.26 |       |      |      |      |      |      |      |      |
| MVE 21/36E-MICRO | F       | 5.71 | 0.98 | 2.36               | 3.35 | 0.26 | 4     | 4.33 | 3.01 | 0.39 | 1.54 | 2.95 | 2.91 | 2.78 |
| MVE41/36E-MICRO  | F       | 6.34 | 1.30 | 0.98-1.60          | 3.62 | 0.26 | 4     | 4.33 | 3.01 | 0.39 | 1.54 | 2.95 | 2.91 | 2.78 |

DIMENSIONAL SPECIFICATIONS (inches)

| Model              | Drawing | C    | M    | Multiple Footprint |      |      | Holes | D    | E    | F    | H    | I    | L    | N    |
|--------------------|---------|------|------|--------------------|------|------|-------|------|------|------|------|------|------|------|
|                    |         | 60Hz | 60Hz | 0.98-1.57          | 3.62 | 0.26 |       |      |      |      |      |      |      |      |
| MVE 3/36E-MICRO-M  | F       | 5.71 | 0.98 | 2.36               | 3.35 | 0.26 | 4     | 4.33 | 3.01 | 0.39 | 1.54 | 2.95 | 2.91 | 2.78 |
| MVE 6/36E-MICRO-M  | F       | 5.71 | 0.98 | 0.98-1.57          | 2.95 | 0.26 | 4     | 3.54 | 3.01 | 0.39 | 1.54 | 2.95 | 2.91 | 2.78 |
| MVE 21/36E-MICRO-M | F       | 5.71 | 0.98 | 0.98-1.57          | 3.62 | 0.26 | 4     | 4.33 | 3.01 | 0.39 | 1.54 | 2.95 | 2.91 | 2.78 |
| MVE 41/36E-MICRO-M | F       | 6.34 | 1.30 | 0.98-1.57          | 3.62 | 0.26 | 4     | 4.33 | 3.01 | 0.39 | 1.54 | 2.95 | 2.91 | 2.78 |

Notes:

.....

.....

.....

.....

NOTE: Dimensions with coarse degree of accuracy related to UNI 22768/1

This information is provided without warranty, representation, inducement or licence of any kind. It is accurate to the best OLI knowledge or is obtained from sources believed to be accurate. OLI therefore assumes no legal responsibility. The latest and most updated information are available online.



» Class II Div.2 Group F, G T4  
 » Conform to UL 1004-1, UL 1004-3, UL60079-31, UL60079-0, CSA 60079-0, CSA 60079- 31, CSA 22.2 N°100, CSA 22.2 N°77

STANDARD  
 EXPLOSION-PROOF  
 MILLING  
 SCREEN VIBRATOR  
 STAINLESS STEEL  
 FLANGED DRIVE



# MVE STANDARD RANGE

## MVE-DC DIRECT CURRENT - 3000 rpm



II 3D Temp. Class: ● 100 °C

| Unbalance (inlb) | Model                   | rpm   | Centrifugal Force (lb) | Weight (lb) | ELECTRICAL SPECIFICATIONS |                       |             |
|------------------|-------------------------|-------|------------------------|-------------|---------------------------|-----------------------|-------------|
|                  |                         |       |                        |             | Input Power (Hp)          | Nominal Current A max | Cable Gland |
| 0.44             | MVE 50/3N-DC-10A0-12V   | 3,000 | 110                    | 10          | 0.11                      | 6.60                  | M16 ●       |
| 0.44             | MVE 50/3N-DC-10A0-24V   | 3,000 | 110                    | 10          | 0.11                      | 3.30                  | M16 ●       |
| 0.93             | MVE 120/3N-DC-23A0-12V  | 3,000 | 258                    | 13          | 0.15                      | 9.60                  | M20 ●       |
| 0.93             | MVE 120/3N-DC-23A0-24V  | 3,000 | 258                    | 13          | 0.15                      | 4.80                  | M20 ●       |
| 1.81             | MVE 200/3N-DC-23A0-12V  | 3,000 | 441                    | 13.88       | 0.21                      | 13.30                 | M20 ●       |
| 1.81             | MVE 200/3N-DC-23A0-24V  | 3,000 | 441                    | 13.88       | 0.21                      | 6.70                  | M20 ●       |
| 4.51             | MVE 500/3N-DC-40A0-24V  | 3,000 | 1,168                  | 35          | 0.35                      | 11.00                 | M20 ●       |
| 9.72             | MVE 1500/3N-DC-50A0-24V | 3,000 | 3,563                  | 51          | 0.70                      | 21.50                 | M20 ●       |

SIZE 23A0



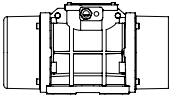
SIZE 40A0



SIZE 50A0







| Model                   | Drawing | Size | DIMENSIONAL SPECIFICATIONS (inches) |      |                    |           |      |       |      |      |      |      |      |      |      |
|-------------------------|---------|------|-------------------------------------|------|--------------------|-----------|------|-------|------|------|------|------|------|------|------|
|                         |         |      | C                                   | M    | A                  | B         | Ø G  | Holes | D    | E    | F    | H    | I    | L    | N    |
|                         |         |      |                                     |      |                    |           |      | N°    |      |      |      |      |      |      |      |
| MVE 50/3N-DC-10A0-12V   | A       | 10A0 | 8.38                                | 1.77 | Multiple Footprint |           |      | 4     | 5.12 | 5.35 | 0.47 | 1.89 | 3.70 | 4.76 | 3.35 |
|                         |         |      | 2.44-2.91                           | 4.17 | 0.35               |           |      |       |      |      |      |      |      |      |      |
| MVE 50/3N-DC-10A0-24V   | A       | 10A0 | 8.38                                | 1.77 | 1.30               | 3.27-4.02 | 0.28 | 4     | 5.12 | 5.35 | 0.47 | 1.89 | 3.70 | 4.76 | 3.35 |
| MVE 120/3N-DC-23A0-12V  | G       | 23A0 | 8.58                                | 2.09 | Multiple Footprint |           |      | 4     | 6.46 | 5.51 | 0.98 | 3.23 | 4.57 | 6.26 | 4.33 |
|                         |         |      | 2.44-2.91                           | 4.17 | 0.35               |           |      |       |      |      |      |      |      |      |      |
| MVE 120/3N-DC-23A0-24V  | G       | 23A0 | 8.58                                | 2.09 | 2.56               | 5.51      | 0.51 | 4     | 6.46 | 5.51 | 0.98 | 3.23 | 4.57 | 6.26 | 4.33 |
| MVE 200/3N-DC-23A0-12V  | G       | 23A0 | 8.58                                | 2.09 | 4.53               | 5.31      | 0.43 | 4     | 6.46 | 5.51 | 0.98 | 3.23 | 4.57 | 6.26 | 4.33 |
| MVE 200/3N-DC-23A0-24V  | G       | 23A0 | 8.58                                | 2.09 | 5.31               | 4.53      | 0.43 | 4     | 6.46 | 5.51 | 0.98 | 3.23 | 4.57 | 6.26 | 4.33 |
| MVE 500/3N-DC-40A0-24V  | D1      | 40A0 | 12.99                               | 3.07 | 4.13               | 5.51      | 0.51 | 4     | 6.69 | 7.70 | 0.59 | 3.62 | 6.85 | 6.50 | 6.30 |
| MVE 1500/3N-DC-50A0-24V | D1      | 50A0 | 12.75                               | 2.48 | 4.72               | 6.69      | 0.71 | 4     | 8.19 | 8.26 | 0.71 | 3.78 | 7.28 | 7.55 | 6.49 |

STANDARD

EXPLOSION-PROOF

MILLING

SCREEN VIBRATOR

STAINLESS STEEL

FLANGED DRIVE

**Notes:**

.....

.....

.....

.....

NOTE: Dimensions with coarse degree of accuracy related to UNI 22768/1

This information is provided without warranty, representation, inducement or licence of any kind. It is accurate to the best OLI knowledge or is obtained from sources believed to be accurate. OLI therefore assumes no legal responsibility. The latest and most updated information are available online.



# MVE-Exd EXPLOSION-PROOF



Ex II 2G: Temp. Class **T4**  
Class I Div.1: Temp. Class **T4**  
Ex II 2D Temp. Class: **135 °C**

\* Terminal Connections: **Y** High Voltage; **Δ** Low Voltage

## 2 POLES - 3000/3600 rpm

| Unbalance (inlb) |       | Model            | Centrifugal Force (lb) |       | Weight (lb) |      | ELECTRICAL SPECIFICATIONS |      |                          |             |                        |         |      |                 |   |
|------------------|-------|------------------|------------------------|-------|-------------|------|---------------------------|------|--------------------------|-------------|------------------------|---------|------|-----------------|---|
| 50Hz             | 60Hz  |                  | 50Hz                   | 60Hz  | 50Hz        | 60Hz | Input Power (Hp)          |      | Standard Nominal Current |             | * Terminal Connections | Ia / In |      | Cable Gland     |   |
| 50Hz             | 60Hz  | 60Hz             | 50Hz                   | 60Hz  | 50Hz        | 60Hz | 50Hz                      | 60Hz | 50Hz (400V)              | 60Hz (460V) |                        | 50Hz    | 60Hz | Metric          |   |
| 6.81             | 4.80  | MVE 1800/2D-50A0 | 1,750                  | 1,764 | 88          |      | 1.01                      | 1.21 | 1.45                     | 1.50        | Y                      | 3.8     | 3.8  | 3/4" NPT 110 °C | ● |
| 11.54            | 8.07  | MVE 3100/2D-50A0 | 2,987                  | 3,009 | 91          |      | 1.48                      | 1.48 | 2.00                     | 2.75        | Y                      | 5.2     | 5.0  | 3/4" NPT 110 °C | ● |
| 13.57            | 9.64  | MVE 3500/2D-60A0 | 3,530                  | 3,545 | 138         | 137  | 2.11                      | 2.15 | 2.94                     | 2.61        | Y                      | 5.9     | 6.2  | 3/4" NPT 110 °C | ● |
| 15.96            | 11.98 | MVE 4100/2D-60A0 | 4,469                  | 4,403 | 141         | 139  | 1.68                      | 1.88 | 3.20                     | 2.80        | Y                      | 6.5     | 6.4  | 3/4" NPT 110 °C | ● |
| 19.95            | 13.83 | MVE 5100/2D-60A1 | 5,075                  | 5,084 | 144         | 140  | 1.68                      | 1.88 | 3.20                     | 2.80        | Y                      | 6.0     | 6.3  | 3/4" NPT 110 °C | ● |
| 29.56            | 19.05 | MVE 7600/2D-75A0 | 7,169                  | 7,002 | 231         | 227  | 4.02                      | 4.02 | 5.20                     | 4.60        | Y                      | 8.3     | 8.2  | 3/4" NPT 110 °C | ● |
| 34.46            | 24.30 | MVE 8800/2D-75A0 | 8,891                  | 8,933 | 238         | 229  | 4.02                      | 4.02 | 5.20                     | 4.60        | Y                      | 8.5     | 9.7  | 3/4" NPT 110 °C | ● |

## 4 POLES - 1500/1800 rpm

| Unbalance (inlb) |        | Model             | Centrifugal Force (lb) |        | Weight (lb) |      | ELECTRICAL SPECIFICATIONS |      |                          |             |                        |         |      |                 |   |
|------------------|--------|-------------------|------------------------|--------|-------------|------|---------------------------|------|--------------------------|-------------|------------------------|---------|------|-----------------|---|
| 50Hz             | 60Hz   |                   | 50Hz                   | 60Hz   | 50Hz        | 60Hz | Input Power (Hp)          |      | Standard Nominal Current |             | * Terminal Connections | Ia / In |      | Cable Gland     |   |
| 50Hz             | 60Hz   | 60Hz              | 50Hz                   | 60Hz   | 50Hz        | 60Hz | 50Hz                      | 60Hz | 50Hz (400V)              | 60Hz (460V) |                        | 50Hz    | 60Hz | Metric          |   |
| 24.67            | 17.08  | MVE 1530/4D-50A0  | 1,574                  | 1,570  | 99          |      | 0.74                      | 0.89 | 1.00                     | 1.00        | Y                      | 3.0     | 3.2  | 3/4" NPT 110 °C | ● |
| 38.49            | 24.67  | MVE 2300/4D-50A0  | 2,456                  | 2,266  | 115         | 99   | 0.80                      | 0.91 | 1.27                     | 1.50        | Y                      | 3.8     | 3.8  | 3/4" NPT 110 °C | ● |
| 47.12            | 33.30  | MVE 3100/4D-60A0  | 3,007                  | 3,060  | 161         | 155  | 1.01                      | 1.34 | 1.67                     | 1.80        | Y                      | 4.0     | 4.0  | 3/4" NPT 110 °C | ● |
| 59.59            | 39.92  | MVE 3880/4D-60A1  | 3,803                  | 3,668  | 168         | 134  | 1.34                      | 1.61 | 1.95                     | 2.00        | Y                      | 4.7     | 4.5  | 3/4" NPT 110 °C | ● |
| 81.46            | 59.62  | MVE 5340/4D-60A1  | 5,198                  | 5,478  | 172         | 159  | 1.68                      | 1.88 | 2.80                     | 2.70        | Y                      | 4.9     | 4.9  | 3/4" NPT 110 °C | ● |
| 88.34            | 58.87  | MVE 5700/4D-70A0  | 5,637                  | 5,410  | 218         | 204  | 2.01                      | 2.15 | 2.70                     | 2.60        | Y                      | 6.0     | 6.1  | 3/4" NPT 110 °C | ● |
| 107.93           | 73.68  | MVE 6840/4D-70A0  | 6,887                  | 6,770  | 231         | 214  | 2.21                      | 2.55 | 2.80                     | 2.70        | Y                      | 6.5     | 6.6  | 3/4" NPT 110 °C | ● |
| 133.11           | 88.86  | MVE 8400/4D-75A0  | 8,494                  | 8,166  | 300         | 276  | 3.08                      | 3.02 | 4.10                     | 3.96        | Y                      | 6.8     | 6.8  | 3/4" NPT 110 °C | ● |
| 148.97           | 104.58 | MVE 9480/4D-75A0  | 9,506                  | 9,610  | 310         | 286  | 3.22                      | 3.49 | 4.30                     | 4.10        | Y                      | 7.0     | 7.2  | 3/4" NPT 110 °C | ● |
| 189.84           | 131.83 | MVE 12260/4D-80A0 | 12,114                 | 12,114 | 427         | 403  | 4.16                      | 4.16 | 5.70                     | 5.30        | Y                      | 7.1     | 7.0  | 3/4" NPT 110 °C | ● |

SIZE 50A0



**UP TO SIZE 50 (INCLUDED)**  
60Hz masses = 50Hz masses adjusted at 70%  
Except for model MVE 1100/15D - 1100/18D



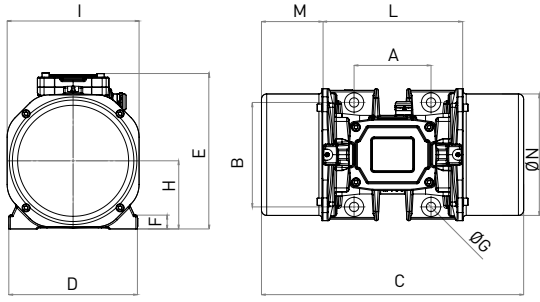
**ABOVE SIZE 50 (NOT INCLUDED)**  
Specific masses for 60Hz



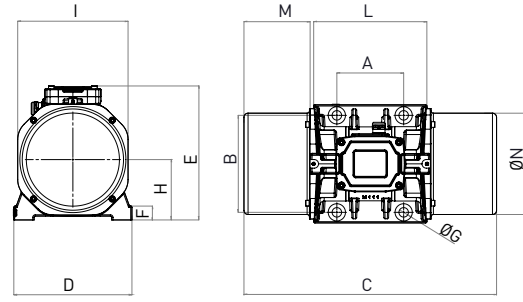
- » II 2G Ex db IIB T4 Gb,
- » II 2D Ex tb IIIC T135°C Db
- » Ex db IIB T4 Gb
- » Ex tb IIIC T135°C Db

- » Ambient temperature from -20°C to +60°C
- » Compliance with Essential Health and Safety Requirements
- » IEC EN 60079-0, IEC EN 60079-31, IEC EN 60079-1

X



Y



DIMENSIONAL SPECIFICATIONS (inches)

| Model            | Drawing | Size | C     |      | M    |      | A    | B     | Ø G  | Holes | D     | E     | F    | H    | I     | L     | N     |
|------------------|---------|------|-------|------|------|------|------|-------|------|-------|-------|-------|------|------|-------|-------|-------|
|                  |         |      | 50Hz  | 60Hz | 50Hz | 60Hz |      |       |      | n°    |       |       |      |      |       |       |       |
|                  |         |      |       |      |      |      |      |       |      |       |       |       |      |      |       |       |       |
| MVE 1800/2D-50A0 | X       | 50A0 | 13.07 |      | 2.50 |      | 4.72 | 6.69  | 0.67 | 4     | 8.23  | 9.88  | 1.06 | 4.06 | 7.28  | 8.07  | 6.52  |
| MVE 3100/2D-50A0 | X       | 50A0 | 13.07 |      | 2.50 |      | 4.72 | 6.69  | 0.67 | 4     | 8.23  | 9.88  | 1.06 | 4.06 | 7.28  | 8.07  | 6.52  |
| MVE 3500/2D-60A0 | X       | 60A0 | 18.78 |      | 4.39 |      | 5.51 | 7.48  | 0.67 | 4     | 9.21  | 11.14 | 0.98 | 4.88 | 9.45  | 10.00 | 8.70  |
| MVE 4100/2D-60A0 | X       | 60A0 | 18.78 |      | 4.39 |      | 5.51 | 7.48  | 0.67 | 4     | 9.21  | 11.14 | 0.98 | 4.88 | 9.45  | 10.00 | 8.70  |
| MVE 5100/2D-60A1 | X       | 60A1 | 18.78 |      | 4.39 |      | 5.51 | 7.48  | 0.87 | 4     | 9.21  | 11.14 | 0.98 | 4.88 | 9.45  | 10.00 | 8.70  |
| MVE 7600/2D-75A0 | Y       | 75A0 | 21.26 |      | 4.65 |      | 6.10 | 10.04 | 0.93 | 4     | 11.89 | 12.99 | 1.18 | 5.91 | 11.02 | 11.97 | 10.43 |
| MVE 8800/2D-75A0 | Y       | 75A0 | 21.81 |      | 4.92 |      | 6.10 | 10.04 | 0.93 | 4     | 11.89 | 12.99 | 1.18 | 5.91 | 11.02 | 11.97 | 10.43 |

DIMENSIONAL SPECIFICATIONS (inches)

| Model             | Drawing | Size | C     |       | M    |      | A    | B     | Ø G  | Holes | D     | E     | F    | H    | I     | L     | N     |
|-------------------|---------|------|-------|-------|------|------|------|-------|------|-------|-------|-------|------|------|-------|-------|-------|
|                   |         |      | 50Hz  | 60Hz  | 50Hz | 60Hz |      |       |      | n°    |       |       |      |      |       |       |       |
|                   |         |      |       |       |      |      |      |       |      |       |       |       |      |      |       |       |       |
| MVE 1530/4D-50A0  | X       | 50A0 | 15.59 |       | 3.76 |      | 4.72 | 6.69  | 0.67 | 4     | 8.23  | 9.88  | 1.06 | 4.06 | 7.28  | 8.07  | 6.52  |
| MVE 2300/4D-50A0  | X       | 50A0 | 18.35 | 15.59 | 5.14 | 3.76 | 4.72 | 6.69  | 0.67 | 4     | 8.23  | 9.88  | 1.06 | 4.06 | 7.28  | 8.07  | 6.52  |
| MVE 3100/4D-60A0  | X       | 60A0 | 18.78 |       | 4.39 |      | 5.51 | 7.48  | 0.67 | 4     | 9.21  | 11.14 | 0.98 | 4.88 | 9.45  | 10.00 | 8.70  |
| MVE 3880/4D-60A1  | X       | 60A1 | 18.78 |       | 4.39 |      | 5.51 | 7.48  | 0.87 | 4     | 9.21  | 11.14 | 0.98 | 4.88 | 9.45  | 10.00 | 8.70  |
| MVE 5340/4D-60A1  | X       | 60A1 | 20.51 |       | 5.26 |      | 5.51 | 7.48  | 0.87 | 4     | 9.21  | 11.14 | 0.98 | 4.88 | 9.45  | 10.00 | 8.70  |
| MVE 5700/4D-70A0  | Y       | 70A0 | 20.67 |       | 4.84 |      | 6.10 | 8.86  | 0.87 | 4     | 10.79 | 12.24 | 1.26 | 5.51 | 10.08 | 10.98 | 9.25  |
| MVE 6840/4D-70A0  | Y       | 70A0 | 23.07 |       | 6.04 |      | 6.10 | 8.86  | 0.87 | 4     | 10.79 | 12.24 | 1.26 | 5.51 | 10.08 | 10.98 | 9.25  |
| MVE 8400/4D-75A0  | Y       | 75A0 | 23.46 |       | 5.75 |      | 6.10 | 10.04 | 0.93 | 4     | 11.89 | 12.99 | 1.18 | 5.91 | 11.02 | 11.97 | 10.43 |
| MVE 9480/4D-75A0  | Y       | 75A0 | 24.25 |       | 6.14 |      | 6.10 | 10.04 | 0.93 | 4     | 11.89 | 12.99 | 1.18 | 5.91 | 11.02 | 11.97 | 10.43 |
| MVE 12260/4D-80A0 | Y       | 80A0 | 24.09 |       | 5.00 |      | 7.09 | 11.02 | 1.02 | 4     | 12.99 | 14.92 | 1.30 | 6.93 | 12.99 | 14.09 | 12.20 |

Notes:

.....

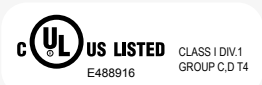
.....

.....

.....

NOTE: Dimensions with coarse degree of accuracy related to UNI 22768/1

This information is provided without warranty, representation, inducement or licence of any kind. It is accurate to the best OLI knowledge or is obtained from sources believed to be accurate. OLI therefore assumes no legal responsibility. The latest and most updated information are available online.



» Class I, Div.1 Group C, D T4 IP66  
 » Conform to UL 1004-1, UL 1004-3, UL1203; UL674, CSA C22.2 No.145, CSA C22.2 No.30-M1986.

STANDARD  
 EXPLOSION-PROOF  
 MILLING  
 SCREEN VIBRATOR  
 STAINLESS STEEL  
 FLANGED DRIVE



# MVE-Exd EXPLOSION-PROOF



Ex II 2G: Temp. Class **T4**  
 Class I Div.1: Temp. Class **T4**  
 Ex II 2D Temp. Class: **135 °C**

\* Terminal Connections: **Y** High Voltage; **▲** Low Voltage

## 6 POLES - 1000/1200 rpm

| Unbalance (inlb) |        | Model             | Centrifugal Force (lb) |        | Weight (lb) |      | ELECTRICAL SPECIFICATIONS |      |                          |             |                        |       |      |                 |
|------------------|--------|-------------------|------------------------|--------|-------------|------|---------------------------|------|--------------------------|-------------|------------------------|-------|------|-----------------|
| 50Hz             | 60Hz   |                   | 50Hz                   | 60Hz   | 50Hz        | 60Hz | Input Power (Hp)          |      | Standard Nominal Current |             | * Terminal Connections | Ia/In |      | Cable Gland     |
| 50Hz             | 60Hz   | 60Hz              | 50Hz                   | 60Hz   | 50Hz        | 60Hz | 50Hz                      | 60Hz | 50Hz (400V)              | 60Hz (460V) |                        | 50Hz  | 60Hz | Metric          |
| 39.88            |        | MVE 1100/6D-50A   | 1,131                  | 1,629  | 119         |      | 0.40                      | 0.43 | 1.10                     | 1.05        | Y                      | 2.8   | 2.7  | 3/4" NPT 110 °C |
| 59.62            | 47.13  | MVE 1730/6D-60A0  | 1,691                  | 1,925  | 161         | 156  | 0.76                      | 0.91 | 1.14                     | 1.21        | Y                      | 3.2   | 3.1  | 3/4" NPT 110 °C |
| 81.46            | 59.59  | MVE 2350/6D-60A1  | 2,310                  | 2,434  | 176         | 162  | 0.75                      | 0.78 | 1.40                     | 1.30        | Y                      | 3.2   | 3.1  | 3/4" NPT 110 °C |
| 123.59           | 85.29  | MVE 3090/6D-60A0  | 3,505                  | 3,483  | 207         | 184  | 1.07                      | 1.21 | 1.60                     | 1.70        | Y                      | 3.3   | 3.3  | 3/4" NPT 110 °C |
| 130.05           | 88.31  | MVE 3580/6D-70A0  | 3,688                  | 3,607  | 240         | 218  | 1.34                      | 1.52 | 2.50                     | 2.72        | Y                      | 3.7   | 3.6  | 3/4" NPT 110 °C |
| 161.92           | 107.96 | MVE 4740/6D-70A0  | 4,592                  | 4,409  | 266         | 237  | 1.61                      | 1.81 | 2.80                     | 3.00        | Y                      | 4.3   | 4.4  | 3/4" NPT 110 °C |
| 202.88           | 133.12 | MVE 5690/6D-75A0  | 5,754                  | 5,437  | 336         | 299  | 2.01                      | 2.15 | 3.50                     | 3.30        | Y                      | 4.8   | 4.8  | 3/4" NPT 110 °C |
| 234.52           | 164.80 | MVE 6620/6D-75A0  | 6,651                  | 6,731  | 355         | 297  | 2.35                      | 2.55 | 4.30                     | 4.00        | Y                      | 5.0   | 5.0  | 3/4" NPT 110 °C |
| 295.30           | 189.85 | MVE 8450/6D-80A0  | 8,375                  | 7,754  | 475         | 432  | 2.82                      | 3.08 | 5.00                     | 4.80        | Y                      | 5.9   | 6.0  | 3/4" NPT 110 °C |
| 363.86           | 253.55 | MVE 10370/6D-80A0 | 10,320                 | 10,355 | 509         | 467  | 3.35                      | 3.75 | 6.20                     | 6.00        | Y                      | 5.5   | 5.7  | 3/4" NPT 110 °C |

## 8 POLES - 750/900 rpm

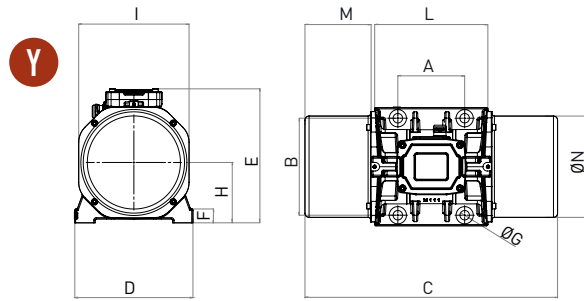
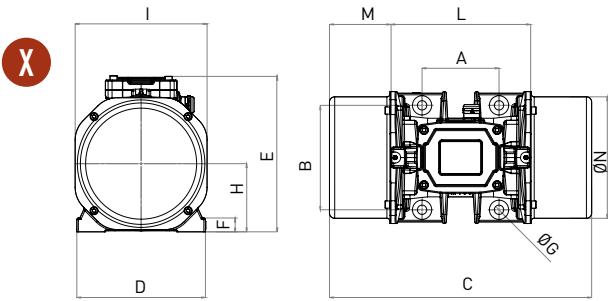
| Unbalance (inlb) |      | Model            | Centrifugal Force (lb) |       | Weight (lb) | ELECTRICAL SPECIFICATIONS |                  |             |                          |      |                        |       |                 |             |
|------------------|------|------------------|------------------------|-------|-------------|---------------------------|------------------|-------------|--------------------------|------|------------------------|-------|-----------------|-------------|
| 50Hz             | 60Hz |                  | 50Hz                   | 60Hz  |             | 50Hz-60Hz                 | Input Power (Hp) |             | Standard Nominal Current |      | * Terminal Connections | Ia/In |                 | Cable Gland |
| 50Hz             | 60Hz | 60Hz             | 50Hz                   | 60Hz  | 50Hz-60Hz   | 50Hz                      | 60Hz             | 50Hz (400V) | 60Hz (460V)              | 50Hz |                        | 60Hz  | Metric          |             |
| 24.71            |      | MVE 550/8D-50A0  | 395                    | 567   | 103         | 0.47                      | 0.51             | 1.15        | 1.15                     | Y    | 1.7                    | 1.7   | 3/4" NPT 110 °C |             |
| 36.47            |      | MVE 880/8D-50A0  | 582                    | 838   | 119         | 0.47                      | 0.51             | 1.15        | 1.15                     | Y    | 1.9                    | 1.9   | 3/4" NPT 110 °C |             |
| 59.59            |      | MVE 1430/8D-60A0 | 950                    | 1,369 | 161         | 0.58                      | 0.67             | 1.12        | 1.10                     | Y    | 2.2                    | 2.2   | 3/4" NPT 110 °C |             |
| 81.47            |      | MVE 2000/8D-60A1 | 1,299                  | 1,872 | 181         | 0.74                      | 0.80             | 1.40        | 1.20                     | Y    | 2.5                    | 2.5   | 3/4" NPT 110 °C |             |
| 130.03           |      | MVE 2900/8D-70A0 | 2,075                  | 2,987 | 240         | 1.07                      | 1.07             | 2.20        | 2.10                     | Y    | 3.0                    | 3.0   | 3/4" NPT 110 °C |             |
| 202.87           |      | MVE 4620/8D-75A0 | 3,236                  | 4,661 | 337         | 1.68                      | 1.74             | 3.20        | 2.80                     | Y    | 4.2                    | 4.1   | 3/4" NPT 110 °C |             |
| 295.29           |      | MVE 6820/8D-80A0 | 4,711                  | 6,784 | 472         | 2.01                      | 2.41             | 3.80        | 3.80                     | Y    | 4.0                    | 4.0   | 3/4" NPT 110 °C |             |
| 363.90           |      | MVE 8360/8D-80A0 | 5,805                  | 8,360 | 507         | 3.35                      | 4.29             | 5.50        | 5.70                     | Y    | 3.9                    | 4.0   | 3/4" NPT 110 °C |             |

SIZE 60A0



- » II 2G Ex db IIB T4 Gb,
- » II 2D Ex tb IIIC T135°C Db
- » Ex db IIB T4 Gb
- » Ex tb IIIC T135°C Db

- » Ambient temperature from -20°C to +60°C
- » Compliance with Essential Health and Safety Requirements
- » IEC EN 60079-0, IEC EN 60079-31, IEC EN 60079-1



DIMENSIONAL SPECIFICATIONS (inches)

| Model             | Drawing | Size | C     |      | M    |       | A    | B | Ø G   | Holes | D    | E    | F     | H     | I     | L | N |
|-------------------|---------|------|-------|------|------|-------|------|---|-------|-------|------|------|-------|-------|-------|---|---|
|                   |         |      | 50Hz  | 60Hz | 50Hz | 60Hz  |      |   |       | n°    |      |      |       |       |       |   |   |
|                   |         |      | 60Hz  |      |      |       |      |   |       |       |      |      |       |       |       |   |   |
| MVE 1100/6D-50A   | X       | 50A0 | 18.35 | 5.14 | 4.72 | 6.69  | 0.67 | 4 | 8.23  | 9.88  | 1.06 | 4.06 | 7.28  | 8.07  | 6.52  |   |   |
| MVE 1730/6D-60A0  | X       | 60A0 | 18.78 | 4.39 | 5.51 | 7.48  | 0.67 | 4 | 9.21  | 11.14 | 0.98 | 4.88 | 9.45  | 10.00 | 8.70  |   |   |
| MVE 2350/6D-60A1  | X       | 60A1 | 20.51 | 5.26 | 5.51 | 7.48  | 0.87 | 4 | 9.21  | 11.14 | 0.98 | 4.88 | 9.45  | 10.00 | 8.70  |   |   |
| MVE 3090/6D-60A0  | X       | 60A0 | 23.50 | 6.75 | 5.51 | 7.48  | 0.67 | 4 | 9.21  | 11.14 | 0.98 | 4.88 | 9.45  | 10.00 | 8.70  |   |   |
| MVE 3580/6D-70A0  | Y       | 70A0 | 23.07 | 6.04 | 6.10 | 8.86  | 0.87 | 4 | 10.79 | 12.24 | 1.26 | 5.51 | 10.08 | 10.98 | 9.25  |   |   |
| MVE 4740/6D-70A0  | Y       | 70A0 | 25.43 | 7.22 | 6.10 | 8.86  | 0.87 | 4 | 10.79 | 12.24 | 1.26 | 5.51 | 10.08 | 10.98 | 9.25  |   |   |
| MVE 5690/6D-75A0  | Y       | 75A0 | 28.50 | 8.27 | 6.10 | 10.04 | 0.93 | 4 | 11.89 | 12.99 | 1.18 | 5.91 | 11.02 | 11.97 | 10.39 |   |   |
| MVE 6620/6D-75A0  | Y       | 75A0 | 28.50 | 8.27 | 6.10 | 10.04 | 0.93 | 4 | 11.89 | 12.99 | 1.18 | 5.91 | 11.02 | 11.97 | 10.39 |   |   |
| MVE 8450/6D-80A0  | Y       | 80A0 | 27.24 | 6.57 | 7.09 | 11.02 | 1.02 | 4 | 12.99 | 14.92 | 1.30 | 6.93 | 12.99 | 14.09 | 12.20 |   |   |
| MVE 10370/6D-80A0 | Y       | 80A0 | 29.29 | 7.60 | 7.09 | 11.02 | 1.02 | 4 | 12.99 | 14.92 | 1.30 | 6.93 | 12.99 | 14.09 | 12.20 |   |   |

DIMENSIONAL SPECIFICATIONS (inches)

| Model            | Drawing | Size | C         |           | A    | B     | Ø G  | Holes | D     | E     | F    | H    | I     | L     | N     |
|------------------|---------|------|-----------|-----------|------|-------|------|-------|-------|-------|------|------|-------|-------|-------|
|                  |         |      | 50Hz-60Hz | 50Hz-60Hz |      |       |      | n°    |       |       |      |      |       |       |       |
|                  |         |      | 60Hz      |           |      |       |      |       |       |       |      |      |       |       |       |
| MVE 550/8D-50A0  | X       | 50A0 | 15.59     | 3.76      | 4.72 | 6.69  | 0.67 | 4     | 8.23  | 9.88  | 1.06 | 4.06 | 7.28  | 8.07  | 6.52  |
| MVE 880/8D-50A0  | X       | 50A0 | 18.35     | 5.14      | 4.72 | 6.69  | 0.67 | 4     | 8.23  | 9.88  | 1.06 | 4.06 | 7.28  | 8.07  | 6.52  |
| MVE 1430/8D-60A0 | X       | 60A0 | 18.78     | 4.39      | 5.51 | 7.48  | 0.67 | 4     | 9.21  | 11.14 | 0.98 | 4.88 | 9.45  | 10.00 | 8.70  |
| MVE 2000/8D-60A1 | X       | 60A1 | 20.51     | 5.26      | 5.51 | 7.48  | 0.87 | 4     | 9.21  | 11.14 | 0.98 | 4.88 | 9.45  | 10.00 | 8.70  |
| MVE 2900/8D-70A0 | Y       | 70A0 | 23.07     | 6.04      | 6.10 | 8.86  | 0.87 | 4     | 10.79 | 12.24 | 1.26 | 5.51 | 10.08 | 10.98 | 9.25  |
| MVE 4620/8D-75A0 | Y       | 75A0 | 28.50     | 8.27      | 6.10 | 10.04 | 0.93 | 4     | 11.89 | 12.99 | 1.18 | 5.91 | 11.02 | 11.97 | 10.39 |
| MVE 6820/8D-80A0 | Y       | 80A0 | 27.24     | 6.57      | 7.09 | 11.02 | 1.02 | 4     | 12.99 | 14.92 | 1.30 | 6.93 | 12.99 | 14.09 | 12.20 |
| MVE 8360/8D-80A0 | Y       | 80A0 | 29.29     | 7.60      | 7.09 | 11.02 | 1.02 | 4     | 12.99 | 14.92 | 1.30 | 6.93 | 12.99 | 14.09 | 12.20 |

Notes:

.....

.....

.....

.....

NOTE: Dimensions with coarse degree of accuracy related to UNI 22768/1

This information is provided without warranty, representation, inducement or licence of any kind. It is accurate to the best OLI knowledge or is obtained from sources believed to be accurate. OLI therefore assumes no legal responsibility. The latest and most updated information are available online.



» Class I, Div.1 Group C, D T4 IP66  
 » Conform to UL 1004-1, UL 1004-3, UL1203; UL674, CSA C22.2 No.145, CSA C22.2 No.30-M1986.

STANDARD

EXPLOSION-PROOF

MILLING

SCREEN VIBRATOR

STAINLESS STEEL

FLANGED DRIVE



# MVE-MILLING GRAIN PROCESSING



II 3D Temp. Class: ● 100 °C ● 135 °C

\* Terminal Connections: ▼ High Voltage ; ▲ Low Voltage

## 6 POLES - 1000/1200 rpm - Destoner / Densimetric Table

| Unbalance (inlb) |       | Model |                  | Centrifugal Force (lb) |      | Weight (lb) |      | ELECTRICAL SPECIFICATIONS |      |                          |             |                        |         |      |             |
|------------------|-------|-------|------------------|------------------------|------|-------------|------|---------------------------|------|--------------------------|-------------|------------------------|---------|------|-------------|
| 50Hz             | 60Hz  | 50Hz  | 60Hz             | 50Hz                   | 60Hz | 50Hz        | 60Hz | Input Power (Hp)          |      | Standard Nominal Current |             | * Terminal Connections | Ia / In |      | Cable Gland |
| 50Hz             | 60Hz  | 50Hz  | 60Hz             | 50Hz                   | 60Hz | 50Hz        | 60Hz | 50Hz                      | 60Hz | 50Hz (400V)              | 60Hz (460V) |                        | 50Hz    | 60Hz | Metric      |
| 48.17            | 38.41 | NA    | MVE 1550/4N-51A0 | 1371                   | 1629 | 88.2        | 77.2 | 0.47                      | 0.54 | 1.22                     | 1.15        | Y                      | 3.0     | 3.0  | M20         |
| 59.89            | -     | NA    | NA               | 1700                   | -    | 87.1        |      | 1.01                      | -    | 1.42                     | -           | Y                      | 3.4     | -    | M25         |

## 10 POLES - 600/720 rpm - Grain Purifier

| Unbalance (inlb) |       | Model |                   | Centrifugal Force (lb) |      | Weight (lb) |      | ELECTRICAL SPECIFICATIONS |      |                          |             |                        |         |      |             |
|------------------|-------|-------|-------------------|------------------------|------|-------------|------|---------------------------|------|--------------------------|-------------|------------------------|---------|------|-------------|
| 50Hz             | 60Hz  | 50Hz  | 60Hz              | 50Hz                   | 60Hz | 50Hz        | 60Hz | Input Power (Hp)          |      | Standard Nominal Current |             | * Terminal Connections | Ia / In |      | Cable Gland |
| 50Hz             | 60Hz  | 50Hz  | 60Hz              | 50Hz                   | 60Hz | 50Hz        | 60Hz | 50Hz                      | 60Hz | 50Hz (400V)              | 60Hz (460V) |                        | 50Hz    | 60Hz | Metric      |
| 107.2            | 107.2 | NA    | MVE 1110/10N-51A0 | 1096                   | 1576 | 119.0       |      | 0.47                      | 0.47 | 1.22                     | 0.98        | Y                      | 2.8     | 2.8  | M20         |
| 118.9            | 118.9 | NA    | MVE 1210/10N-51A0 | 1215                   | 1748 | 125.7       |      | 0.47                      | 0.47 | 1.22                     | 0.98        | Y                      | 2.8     | 2.8  | M20         |
| 142.8            | 142.8 | NA    | MVE 1720/10N-61A0 | 1457                   | 2099 | 160.9       |      | 0.54                      | 0.54 | 1.20                     | 1.00        | Y                      | 2.5     | 2.5  | M20         |
| 166.3            | 166.3 | NA    | MVE 2500/10N-60A0 | 1698                   | 2447 | 207.2       |      | 1.05                      | 1.05 | 1.40                     | 1.30        | Y                      | 2.5     | 2.5  | M25         |
| 204.5            | 204.5 | NA    | MVE 3000/10N-60A0 | 2088                   | 3007 | 229.3       |      | 1.05                      | 1.05 | 1.40                     | 1.30        | Y                      | 2.5     | 2.5  | M25         |

## 12 POLES - 600 rpm - Grain Purifier

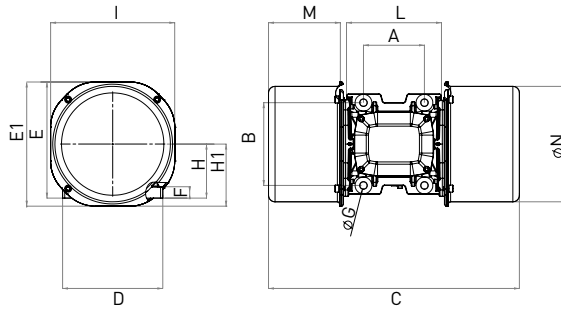
| Unbalance (inlb) |       | Model |                   | Centrifugal Force (lb) |      | Weight (lb) |      | ELECTRICAL SPECIFICATIONS |      |                          |             |                        |         |      |             |
|------------------|-------|-------|-------------------|------------------------|------|-------------|------|---------------------------|------|--------------------------|-------------|------------------------|---------|------|-------------|
| 50Hz             | 60Hz  | 50Hz  | 60Hz              | 50Hz                   | 60Hz | 50Hz        | 60Hz | Input Power (Hp)          |      | Standard Nominal Current |             | * Terminal Connections | Ia / In |      | Cable Gland |
| 50Hz             | 60Hz  | 50Hz  | 60Hz              | 50Hz                   | 60Hz | 50Hz        | 60Hz | 50Hz                      | 60Hz | 50Hz (400V)              | 60Hz (460V) |                        | 50Hz    | 60Hz | Metric      |
| -                | 107.2 | NA    | MVE 1110/12N-51A0 | -                      | 1096 | 119.0       |      | -                         | 0.47 | -                        | 0.98        | Y                      | -       | 2.8  | M20         |
| -                | 118.9 | NA    | MVE 1210/12N-51A0 | -                      | 1215 | 125.7       |      | -                         | 0.47 | -                        | 0.98        | Y                      | -       | 2.8  | M20         |
| -                | 164.5 | NA    | MVE 1720/12N-61A0 | -                      | 1457 | 160.9       |      | -                         | 0.54 | -                        | 1           | Y                      | -       | 2.3  | M20         |



60Hz masses = 50Hz masses adjusted at 100%



L



| Model |                  | Drawing | Size | DIMENSIONAL SPECIFICATIONS (inches) |   |   |   |   |   |     |       |   |   |    |   |     |
|-------|------------------|---------|------|-------------------------------------|---|---|---|---|---|-----|-------|---|---|----|---|-----|
|       |                  |         |      | C                                   |   | M |   | A | B | Ø G | Holes | D | E | F  | H | I   |
| 50Hz  | 60Hz             | 50Hz    | 60Hz | n°                                  |   |   |   |   |   |     |       |   |   |    |   |     |
| NA    | MVE 1550/4N-51A0 | D1      | 51A0 | 17                                  | 5 | 5 | 7 | 1 | 4 | 8   | 9     | 1 | 4 | 8  | 8 | 7.2 |
| NA    | NA               | M       | 58A0 | 17                                  | 5 | 5 | 7 | 1 | 4 | 8   | 11    | 2 | 6 | 10 | 7 | 8.7 |

| Model |                   | Drawing | Size | DIMENSIONAL SPECIFICATIONS (inches) |      |      |      |      |   |      |       |       |      |      |      |       |      |       |   |
|-------|-------------------|---------|------|-------------------------------------|------|------|------|------|---|------|-------|-------|------|------|------|-------|------|-------|---|
|       |                   |         |      | C                                   |      | M    |      | A    | B | Ø G  | Holes | D     | E    | E1   | F    | H     | H1   | I     | L |
| 50Hz  | 60Hz              | 50Hz    | 60Hz | n°                                  |      |      |      |      |   |      |       |       |      |      |      |       |      |       |   |
| NA    | MVE 1110/10N-51A0 | L       | 51A0 | 19.37                               | 5.28 | 4.72 | 6.69 | 0.67 | 4 | 8.19 | 8.86  | 9.45  | 0.87 | 4.13 | 4.72 | 9.45  | 7.56 | 8.74  |   |
| NA    | MVE 1210/10N-51A0 | L       | 51A0 | 19.37                               | 5.28 | 4.72 | 6.69 | 0.67 | 4 | 8.19 | 8.86  | 9.45  | 0.87 | 4.13 | 4.72 | 9.45  | 7.56 | 8.74  |   |
| NA    | MVE 1720/10N-61A0 | L       | 61A0 | 22.68                               | 6.50 | 5.51 | 7.48 | 0.67 | 4 | 9.06 | 10.47 | 11.22 | 1.02 | 4.88 | 5.63 | 11.22 | 8.58 | 10.43 |   |
| NA    | MVE 2500/10N-60A0 | L       | 60A0 | 22.68                               | 6.50 | 5.51 | 7.48 | 0.67 | 4 | 9.06 | 10.47 | 11.22 | 1.02 | 4.88 | 5.63 | 11.22 | 8.58 | 10.43 |   |
| NA    | MVE 3000/10N-60A0 | L       | 60A0 | 22.68                               | 6.50 | 5.51 | 7.48 | 0.67 | 4 | 9.06 | 10.47 | 11.22 | 1.02 | 4.88 | 5.63 | 11.22 | 8.58 | 10.43 |   |

| Model |                   | Drawing | Size | DIMENSIONAL SPECIFICATIONS (inches) |      |      |      |      |   |      |       |       |      |      |      |       |      |       |   |
|-------|-------------------|---------|------|-------------------------------------|------|------|------|------|---|------|-------|-------|------|------|------|-------|------|-------|---|
|       |                   |         |      | C                                   |      | M    |      | A    | B | Ø G  | Holes | D     | E    | E1   | F    | H     | H1   | I     | L |
| 50Hz  | 60Hz              | 50Hz    | 60Hz | n°                                  |      |      |      |      |   |      |       |       |      |      |      |       |      |       |   |
| NA    | MVE 1110/12N-51A0 | L       | 51A0 | 19.37                               | 5.28 | 4.72 | 6.69 | 0.67 | 4 | 8.19 | 8.86  | 9.45  | 0.87 | 4.13 | 4.72 | 9.45  | 7.56 | 8.74  |   |
| NA    | MVE 1210/12N-51A0 | L       | 51A0 | 19.37                               | 5.28 | 4.72 | 6.69 | 0.67 | 4 | 8.19 | 8.86  | 9.45  | 0.87 | 4.13 | 4.72 | 9.45  | 7.56 | 8.74  |   |
| NA    | MVE 1720/12N-61A0 | L       | 61A0 | 22.68                               | 6.50 | 5.51 | 7.48 | 0.67 | 4 | 9.06 | 10.47 | 11.22 | 1.02 | 4.88 | 5.63 | 11.22 | 8.58 | 10.43 |   |

NOTE: Dimensions with coarse degree of accuracy related to UNI 22768/1

This information is provided without warranty, representation, inducement or licence of any kind. It is accurate to the best OLI knowledge or is obtained from sources believed to be accurate. OLI therefore assumes no legal responsibility. The latest and most updated information are available online.



» Declaration of conformity "type B" according to: 2014/35/UE - 2006/42/EC - EN 60034-1  
 » Conform to UL1446 and CSA 22.2 No 0-10

STANDARD

EXPLOSION-PROOF

MILLING

SCREEN VIBRATOR

STAINLESS STEEL

FLANGED DRIVE

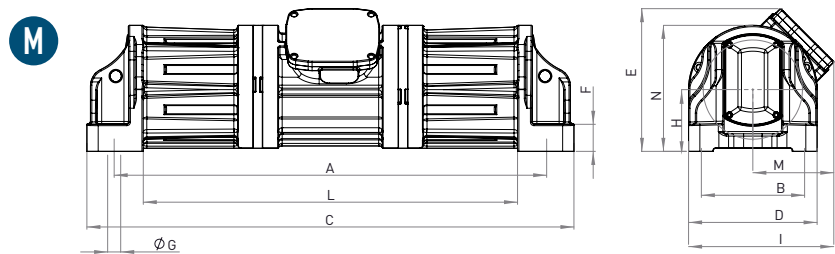


# MVE-SV SCREEN VIBRATOR



Ex II 2G: Temp. Class **T4**  
 Class I Div.1: Temp. Class **T4**  
 Ex II 2D Temp. Class: **● 135 °C**

\* Terminal Connections: **Y** High Voltage; **▲** Low Voltage



## 4 POLES EXPLOSION PROOF – 1500/1800 rpm

| Unbalance (in/lb) |      | Model For U.S. Market | Centrifugal Force (lb) |        | Weight (lb) |       | ELECTRICAL SPECIFICATIONS |      |             |             |                        |                  | CERTIFICATE |                |      |
|-------------------|------|-----------------------|------------------------|--------|-------------|-------|---------------------------|------|-------------|-------------|------------------------|------------------|-------------|----------------|------|
|                   |      |                       | 50Hz                   | 60Hz   | 50Hz        | 60Hz  | 50Hz                      | 60Hz | 50Hz (400V) | 60Hz (460V) | * Terminal Connections | Ia / In (Ampere) | Cable Gland |                |      |
| 50Hz              | 60Hz | 60Hz                  | 50Hz                   | 60Hz   | 50Hz        | 60Hz  | 50Hz                      | 60Hz | 50Hz        | 60Hz        | 50Hz                   | 60Hz             |             | 50Hz           | 60Hz |
| 121               | 84   | MVE 7700/4D-SV-75A0   | 7,716                  | 7,721  | 396.8       | 374.8 | 2.9                       | 3.5  | 4.3         | 4.3         | Y                      | 6.5              | 6.5         | 3/4" NPT 110°C | ●    |
| 121               | 84   | MVE 7700/4D-SV-75D0   | 7,716                  | 7,721  | 396.8       | 374.8 | 2.9                       | 3.5  | 4.3         | 4.3         | Y                      | 6.5              | 6.5         | 3/4" NPT 110°C | ●    |
| 181               | 127  | MVE 11500/4D-SV-80A0  | 11,552                 | 11,647 | 465.2       | 440.9 | 3.3                       | 4.0  | 5.5         | 5.2         | Y                      | 7.1              | 7.0         | 3/4" NPT 110°C | ●    |
| 269               | 188  | MVE 17100/4D-SV-85A0  | 17,174                 | 17,308 | 617.3       | 573.2 | 4.3                       | 5.1  | 6.3         | 6.3         | Y                      | 7.1              | 7.0         | 3/4" NPT 110°C | ●    |

## 4 POLES STANDARD RANGE – 1500/1800 rpm



The MVE-SV is available also as "standard" range, with Ex II 3D certification: Ex II 3D Temp. Class: **● 135 °C**  
 Electrical and dimensional specifications are the same as the "explosion proof" range.

NOTE: The Model name in the standard range is different: the letter "D" changes in "N".



- » II 3D Ex tc IIIC Tx IP66
- » Equipment and protective system intended for use in potentially explosive atmospheres (Zone 22) - Directive 2014/34/UE
- » Compliance with Essential Health and Safety Requirements EN 60079-0, EN 60079-31



- » Declaration of conformity "type B" according to: 2014/35/UE - 2006/42/EC - EN 60034-1
- » Conform to UL1446 and CSA 22.2 No 0-10

SV SIZE 75A0



SV SIZE 85A0



UP TO SIZE 50 (INCLUDED)  
 60Hz masses = 50Hz masses adjusted at 70%



ABOVE SIZE 50 (NOT INCLUDED)  
 Specific masses for 60Hz

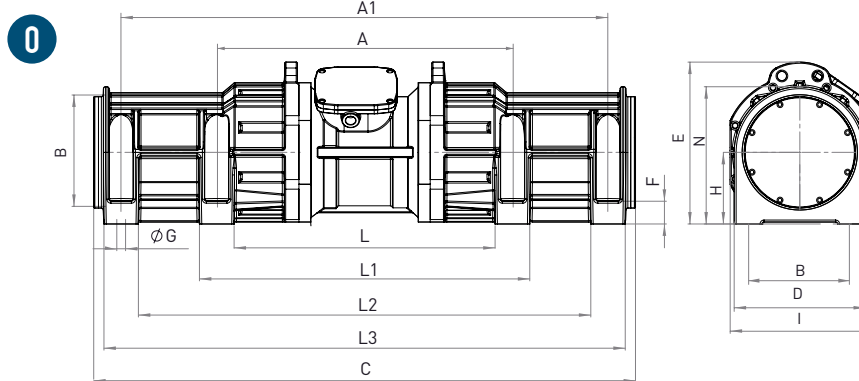
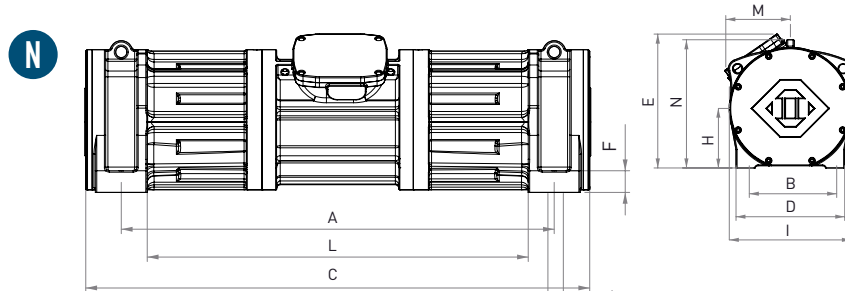
To convert kg into Newton:  $N = 9.81 \cdot kg$



- » II 2G Ex db IIB T4 Gb,
- » II 2D Ex tb IIIC T135°C Db
- » Ex db IIB T4 Gb
- » Ex tb IIIC T135°C Db

- » Ambient temperature from -20°C to +60°C
- » Compliance with Essential Health and Safety Requirements IEC EN 60079-0, IEC EN 60079-31, IEC EN 60079-1





DIMENSIONAL SPECIFICATIONS (inches)

| Model<br>For U.S. Market | Drawing | Size | C     | M    | A     | A1    | B     | ØG   | Holes | D     | E     | F    | H    | I     | L     | L1    | L2    | L3    | N     |
|--------------------------|---------|------|-------|------|-------|-------|-------|------|-------|-------|-------|------|------|-------|-------|-------|-------|-------|-------|
| 60Hz                     |         |      |       |      |       |       |       |      |       |       |       |      |      |       |       |       |       |       |       |
| MVE 7700/4D-SV-75A0      | A       | 75A0 | 42.52 | 7.07 | 37.76 | -     | 9.02  | 1.14 | 4     | 11.22 | 12.46 | 2.36 | 5.39 | 12.68 | 32.68 | -     | -     | -     | 11.00 |
| MVE 7700/4D-SV-75D0      | A       | 75D0 | 42.52 | 7.07 | 37.76 | -     | 9.50  | 0.79 | 4     | 11.22 | 12.46 | 2.36 | 5.39 | 12.68 | 32.68 | -     | -     | -     | 11.00 |
| MVE 11500/4D-SV-80A0     | B       | 80A0 | 43.94 | 6.69 | 37.76 | -     | 9.02  | 1.14 | 4     | 11.22 | 13.82 | 1.89 | 6.14 | 13.11 | 33.23 | -     | -     | -     | 12.44 |
| MVE 17100/4D-SV-85A0     | C       | 85A0 | 55.57 | /    | 31.20 | 49.92 | 11.02 | 0.87 | 8     | 12.99 | 16.02 | 2.24 | 7.09 | 14.17 | 27.84 | 34.55 | 46.52 | 53.27 | 13.58 |

Notes:

.....

.....

.....

.....

NOTE: Dimensions with coarse degree of accuracy related to UNI 22768/1

This information is provided without warranty, representation, inducement or licence of any kind. It is accurate to the best OLI knowledge or is obtained from sources believed to be accurate. OLI therefore assumes no legal responsibility. The latest and most updated information are available online.



# MVE-SS STAINLESS STEEL



Ex II 3D Temp. Class: ● 100 °C ● 135 °C

\* Terminal Connections: Y High Voltage; ▲ Low Voltage

## 2 POLES - 3000/3600 rpm

| Unbalance (inlb) |      | Model               | Centrifugal Force (lb) |       | Weight (lb) |      | ELECTRICAL SPECIFICATIONS |             |                          |      |                       |         |        |             |
|------------------|------|---------------------|------------------------|-------|-------------|------|---------------------------|-------------|--------------------------|------|-----------------------|---------|--------|-------------|
| 50Hz             | 60Hz |                     | 60Hz                   |       | 50Hz        | 60Hz | Input Power (Hp)          |             | Standard Nominal Current |      | * Terminal Connection | Ia / In |        | Cable Gland |
| 50Hz             | 60Hz | 50Hz                | 60Hz                   | 50Hz  | 60Hz        | 50Hz | 60Hz                      | 50Hz (400V) | 60Hz (460V)              | 50Hz |                       | 60Hz    | Metric |             |
| 3.2              | 2.2  | MVE 690/2N-SS-30A0  | 707                    | 712   | 35          |      | 0.34                      | 0.38        | 0.52                     | 0.45 | Y                     | 3.8     | 3.7    | M20 ●       |
| 7.4              | 5.3  | MVE 1700/2N-SS-40A0 | 1,671                  | 1,686 | 54.9        |      | 0.79                      | 0.82        | 1.25                     | 1.24 | Y                     | 4.5     | 5.2    | M20 ●       |
| 7.8              | 5.5  | MVE 1800/2N-SS-50A0 | 1,750                  | 1,763 | 70.5        | 68.3 | 0.94                      | 1.13        | 1.45                     | 1.50 | Y                     | 4.0     | 4.0    | M20 ●       |

## 4 POLES - 1500/1800 rpm

| Unbalance (inlb) |       | Model               | Centrifugal Force (lb) |       | Weight (lb) |      | ELECTRICAL SPECIFICATIONS |             |                          |      |                        |         |        |             |
|------------------|-------|---------------------|------------------------|-------|-------------|------|---------------------------|-------------|--------------------------|------|------------------------|---------|--------|-------------|
| 50Hz             | 60Hz  |                     | 60Hz                   |       | 50Hz        | 60Hz | Input Power (Hp)          |             | Standard Nominal Current |      | * Terminal Connections | Ia / In |        | Cable Gland |
| 50Hz             | 60Hz  | 50Hz                | 60Hz                   | 50Hz  | 60Hz        | 50Hz | 60Hz                      | 50Hz (400V) | 60Hz (460V)              | 50Hz |                        | 60Hz    | Metric |             |
| 7.72             | 5.42  | MVE 400/4N-SS-30A0  | 428                    | 432   | 40.8        |      | 0.16                      | 0.19        | 0.49                     | 0.50 | Y                      | 2.2     | 2.2    | M20 ●       |
| 20.06            | 14.04 | MVE 1150/4N-SS-40A0 | 1,111                  | 1,120 | 65.3        |      | 0.47                      | 0.54        | 1.06                     | 1.09 | Y                      | 3.0     | 2.9    | M20 ●       |
| 28.42            | 19.68 | MVE 1540/4N-SS-50A0 | 1,574                  | 1,570 | 85.9        |      | 0.83                      | 0.98        | 1.32                     | 1.20 | Y                      | 3.2     | 3.4    | M20 ●       |
| 44.34            | 31.01 | MVE 2300/4N-SS-50A0 | 2,456                  | 2,110 | 104.1       |      | 0.86                      | 1.03        | 1.40                     | 1.35 | Y                      | 4.0     | 4.0    | M20 ●       |
| 54.30            | 38.36 | MVE 3100/4N-SS-60A0 | 3,007                  | 3,059 | 133.4       |      | 0.94                      | 1.13        | 1.78                     | 1.78 | Y                      | 4.2     | 4.2    | M25 ●       |
| 93.85            | 68.68 | MVE 5340/4N-SS-60A0 | 5,198                  | 5,478 | 143.3       |      | 2.11                      | 2.52        | 3.20                     | 3.20 | Y                      | 5.1     | 5.1    | M25 ●       |

## 6 POLES - 1000/1200 rpm

| Unbalance (inlb) |       | Model               | Centrifugal Force (lb) |       | Weight (lb) |       | ELECTRICAL SPECIFICATIONS |             |                          |      |                        |         |        |             |
|------------------|-------|---------------------|------------------------|-------|-------------|-------|---------------------------|-------------|--------------------------|------|------------------------|---------|--------|-------------|
| 50Hz             | 60Hz  |                     | 60Hz                   |       | 50Hz        | 60Hz  | Input Power (Hp)          |             | Standard Nominal Current |      | * Terminal Connections | Ia / In |        | Cable Gland |
| 50Hz             | 60Hz  | 50Hz                | 60Hz                   | 50Hz  | 60Hz        | 50Hz  | 60Hz                      | 50Hz (400V) | 60Hz (460V)              | 50Hz |                        | 60Hz    | Metric |             |
| 16.75            | 11.69 | MVE 410/6N-SS-40A0  | 412                    | 414   | 61.5        |       | 0.20                      | 0.24        | 0.65                     | 0.62 | Y                      | 2.2     | 2.2    | M20 ●       |
| 45.94            | 45.94 | MVE 1600/6N-SS-50A0 | 1,131                  | 1,629 | 101.0       |       | 0.74                      | 0.54        | 1.22                     | 1.15 | Y                      | 3.0     | 2.9    | M20 ●       |
| 68.70            | 54.29 | MVE 1730/6N-SS-60A0 | 1,690                  | 1,924 | 132.3       | 127.9 | 1.01                      | 1.07        | 1.42                     | 1.32 | Y                      | 3.4     | 3.3    | M25 ●       |
| 142.40           | 98.26 | MVE 3090/6N-SS-60A0 | 3,505                  | 3,483 | 185.2       | 160.3 | 1.21                      | 1.45        | 1.80                     | 2.00 | Y                      | 3.5     | 3.5    | M25 ●       |

## 8 POLES - 750/900 rpm

| Unbalance (inlb) |      | Model               | Centrifugal Force (lb) |       | Weight (lb) |      | ELECTRICAL SPECIFICATIONS |             |                          |      |                        |         |        |             |
|------------------|------|---------------------|------------------------|-------|-------------|------|---------------------------|-------------|--------------------------|------|------------------------|---------|--------|-------------|
| 50Hz             | 60Hz |                     | 60Hz                   |       | 50Hz        | 60Hz | Input Power (Hp)          |             | Standard Nominal Current |      | * Terminal Connections | Ia / In |        | Cable Gland |
| 50Hz             | 60Hz | 50Hz                | 60Hz                   | 50Hz  | 60Hz        | 50Hz | 60Hz                      | 50Hz (400V) | 60Hz (460V)              | 50Hz |                        | 60Hz    | Metric |             |
| 16.70            |      | MVE 330/8N-SS-40A0  | 231                    | 333   | 65.5        |      | 0.31                      | 0.34        | 1.14                     | 1.14 | Y                      | 1.7     | 1.7    | M20 ●       |
| 42.01            |      | MVE 880/8N-SS-50A0  | 582                    | 838   | 101.0       |      | 0.34                      | 0.40        | 0.90                     | 0.89 | Y                      | 2.1     | 2.1    | M20 ●       |
| 68.66            |      | MVE 1430/8N-SS-60A0 | 950                    | 1,369 | 138.9       |      | 0.50                      | 0.60        | 1.20                     | 1.20 | Y                      | 2.4     | 2.4    | M25 ●       |
| 93.86            |      | MVE 2000/8N-SS-60A0 | 1,298                  | 1,871 | 154.3       |      | 0.74                      | 0.72        | 1.23                     | 1.29 | Y                      | 2.7     | 2.7    | M25 ●       |



2, 4, 6 POLES  
60Hz masses = 50Hz masses adjusted at 70%



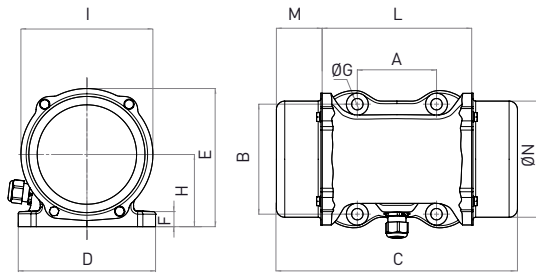
8 POLES  
60Hz masses = 50Hz masses adjusted at 100%

To convert kg into Newton: N = 9.81 · kg

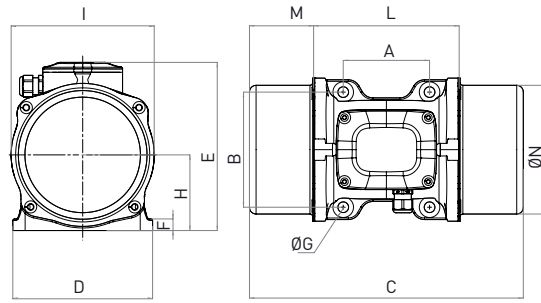


- » IIC3D Ex tc IIIC Tx IP66
- » Equipment and protective system intended for use in potentially explosive atmospheres (Zone 22) - Directive 2014/34/UE
- » Compliance with Essential Health and Safety Requirements
- » EN 60079-0, EN 60079-31

P



Q



DIMENSIONAL SPECIFICATIONS (inches)

| Model               | Drawing | Size | C     |      | M     |      | A    | B    | ØG   | Holes | D    | E    | F    | H    | I    | L    | N    |
|---------------------|---------|------|-------|------|-------|------|------|------|------|-------|------|------|------|------|------|------|------|
|                     |         |      | 50Hz  | 60Hz | 50Hz  | 60Hz |      |      |      | N°    |      |      |      |      |      |      |      |
|                     |         |      |       |      |       |      |      |      |      |       |      |      |      |      |      |      |      |
| MVE 690/2N-SS-30A0  | P       | 30A0 | 99.60 |      | 16.53 |      | 3.54 | 4.92 | 0.51 | 4     | 6.14 | 6.18 | 0.67 | 3.23 | 5.91 | 6.46 | 5.28 |
| MVE 1700/2N-SS-40A0 | Q       | 40A0 | 13.11 |      | 3.07  |      | 4.13 | 5.51 | 0.51 | 4     | 6.69 | 8.03 | 0.55 | 3.62 | 6.85 | 6.85 | 6.14 |
| MVE 1800/2N-SS-50A0 | Q       | 50A0 | 12.76 |      | 2.50  |      | 4.72 | 6.69 | 0.67 | 4     | 8.19 | 8.78 | 0.71 | 3.78 | 7.28 | 7.56 | 6.50 |

DIMENSIONAL SPECIFICATIONS (inches)

| Model               | Drawing | Size | C     |      | M    |      | A    | B    | ØG   | Holes | D    | E    | F    | H    | I    | L    | N    |
|---------------------|---------|------|-------|------|------|------|------|------|------|-------|------|------|------|------|------|------|------|
|                     |         |      | 50Hz  | 60Hz | 50Hz | 60Hz |      |      |      | N°    |      |      |      |      |      |      |      |
|                     |         |      |       |      |      |      |      |      |      |       |      |      |      |      |      |      |      |
| MVE 400/4N-SS-30A0  | P       | 30A0 | 11.73 |      | 2.52 |      | 3.54 | 4.92 | 0.51 | 4     | 6.14 | 6.18 | 0.67 | 3.23 | 5.91 | 6.46 | 2.52 |
| MVE 1150/4N-SS-40A0 | Q       | 40A0 | 13.11 |      | 3.07 |      | 4.13 | 5.51 | 0.51 | 4     | 6.69 | 8.03 | 0.55 | 3.62 | 6.85 | 6.85 | 6.14 |
| MVE 1540/4N-SS-50A0 | Q       | 50A0 | 15.28 |      | 3.74 |      | 4.72 | 6.69 | 0.67 | 4     | 8.19 | 8.78 | 0.71 | 3.78 | 7.28 | 7.76 | 6.50 |
| MVE 2300/4N-SS-50A0 | Q       | 50A0 | 18.03 |      | 5.08 |      | 4.72 | 6.69 | 0.67 | 4     | 8.19 | 8.78 | 0.71 | 3.78 | 7.28 | 7.56 | 6.69 |
| MVE 3100/4N-SS-60A0 | Q       | 60A0 | 17.52 |      | 4.37 |      | 5.51 | 7.48 | 0.67 | 4     | 9.06 | 9.84 | 1.02 | 4.88 | 9.45 | 8.58 | 8.70 |
| MVE 5340/4N-SS-60A0 | Q       | 60A0 | 19.25 |      | 5.24 |      | 5.51 | 7.48 | 0.67 | 4     | 9.06 | 9.84 | 1.02 | 4.88 | 9.45 | 8.58 | 8.70 |

DIMENSIONAL SPECIFICATIONS (inches)

| Model               | Drawing | Size | C     |       | M    |      | A    | B    | ØG   | Holes | D    | E    | F    | H    | I    | L    | N    |
|---------------------|---------|------|-------|-------|------|------|------|------|------|-------|------|------|------|------|------|------|------|
|                     |         |      | 50Hz  | 60Hz  | 50Hz | 60Hz |      |      |      | N°    |      |      |      |      |      |      |      |
|                     |         |      |       |       |      |      |      |      |      |       |      |      |      |      |      |      |      |
| MVE 410/6N-SS-40A0  | Q       | 40A0 | 13.11 |       | 3.07 |      | 4.13 | 5.51 | 0.51 | 4     | 6.69 | 8.03 | 0.55 | 3.62 | 6.85 | 6.85 | 6.14 |
| MVE 1600/6N-SS-50A0 | Q       | 50A0 | 18.03 |       | 5.08 |      | 4.72 | 6.69 | 0.67 | 4     | 8.19 | 8.78 | 0.71 | 3.78 | 7.28 | 7.56 | 6.69 |
| MVE 1730/6N-SS-60A0 | Q       | 60A0 | 17.52 |       | 4.37 |      | 5.51 | 7.48 | 0.67 | 4     | 9.06 | 9.84 | 1.02 | 4.88 | 9.45 | 8.58 | 8.70 |
| MVE 3090/6N-SS-60A0 | Q       | 60A0 | 22.24 | 19.25 | 6.73 | 5.24 | 5.51 | 7.48 | 0.67 | 4     | 9.06 | 9.84 | 1.02 | 4.88 | 9.45 | 8.58 | 8.70 |

DIMENSIONAL SPECIFICATIONS (inches)

| Model               | Drawing | Size | C     |      | M    |      | A    | B    | ØG   | Holes | D    | E    | F    | H    | I    | L    | N    |
|---------------------|---------|------|-------|------|------|------|------|------|------|-------|------|------|------|------|------|------|------|
|                     |         |      | 50Hz  | 60Hz | 50Hz | 60Hz |      |      |      | N°    |      |      |      |      |      |      |      |
|                     |         |      |       |      |      |      |      |      |      |       |      |      |      |      |      |      |      |
| MVE 330/8N-SS-40A0  | Q       | 40A0 | 13.11 |      | 3.07 |      | 4.13 | 5.51 | 0.51 | 4     | 6.69 | 8.03 | 0.55 | 3.62 | 6.85 | 6.85 | 6.14 |
| MVE 880/8N-SS-50A0  | Q       | 50A0 | 18.03 |      | 5.08 |      | 4.72 | 6.69 | 0.67 | 4     | 8.19 | 8.78 | 0.71 | 3.78 | 7.28 | 7.56 | 6.69 |
| MVE 1430/8N-SS-60A0 | Q       | 60A0 | 17.52 |      | 4.37 |      | 5.51 | 7.48 | 0.67 | 4     | 9.06 | 9.84 | 1.02 | 4.88 | 9.45 | 8.58 | 8.70 |
| MVE 2000/8N-SS-60A0 | Q       | 60A0 | 19.25 |      | 5.24 |      | 5.51 | 7.48 | 0.67 | 4     | 9.06 | 9.84 | 1.02 | 4.88 | 9.45 | 8.58 | 8.70 |

NOTE: Dimensions with coarse degree of accuracy related to UNI 22768/1

This information is provided without warranty, representation, inducement or licence of any kind. It is accurate to the best OLI knowledge or is obtained from sources believed to be accurate. OLI therefore assumes no legal responsibility. The latest and most updated information are available online.



» Declaration of conformity "type B" according to: 2014/35/UE - 2006/42/EC - EN 60034-1  
 » Conform to UL1446 and CSA 22.2 No 0-10

STANDARD

EXPLOSION-PROOF

MILLING

SCREEN VIBRATOR

STAINLESS STEEL

FLANGED DRIVE



# MVE-FD FLANGED DRIVE

## Applications

The FD series have been designed to be used on horizontal, inclined, mobile or stationary vibrating screens. In fact, thanks to their design and performance they can be used on many applications.

### LIST OF APPLICATIONS

- Circular / elliptical motion screen
- Circular motion inclined feeders
- Dewatering screen
- Scalping screen
- Vibrating machines and plants for aggregates, soil and minerals processing



Horizontal screen with two MVE-FD

## Advantages

### PLUG & PLAY: EASY AND FAST

The installation of the FD vibrator on the application is very simple and its replacement is very quick.

### MODULARITY

The use of FD requires few structural elements: both design phase and construction are made simpler.

### BUILT TO LAST

The FD series has been designed and built with the aim of reaching a life time of more than 20,000 hours, in any condition.

### VERSATILE

The FD series can be operated via VFD inverters, making it a versatile drive for screens.

### MVE-FD

|                 |   |
|-----------------|---|
| PROBLEM SOLVING | Avoids the use of eccentric shafts with oil lubrication system. |
|-----------------|---|

### FEATURES

|                      |                            |
|----------------------|----------------------------|
| INPUT VOLTAGE        | 400V (50Hz) or 460V (60Hz) |
| AMBIENT TEMPERATURE  | -20 °C / + 40 °C           |
| ENCLOSURE PROTECTION | IP 66                      |
| THERMAL PROTECTION   | PTC Thermistor 130 °C      |
| INSULATION CLASS     | F                          |

SIZE 80AX A



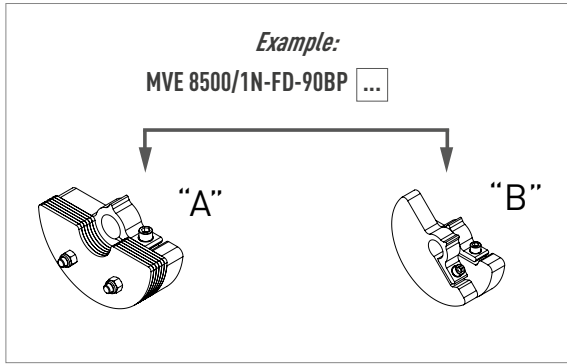
SIZE 91AX A



SIZE 110BS B



Product code digit for masses follows the scheme as below:



Ex II 3D Temp. Class: ● 135 °C

\* Terminal Connections: Y High Voltage; Δ Low Voltage

## 6 POLES - 1000/1200 rpm

| Unbalance (lbin) |        | Model                   | Centrifugal Force (lb) |         | Weight (lb) |        | ELECTRICAL SPECIFICATIONS |      |                 |           |                       |                  |      |             |
|------------------|--------|-------------------------|------------------------|---------|-------------|--------|---------------------------|------|-----------------|-----------|-----------------------|------------------|------|-------------|
| 50Hz             | 60Hz   |                         | 50Hz                   | 60Hz    | 50Hz        | 60Hz   | Input Power (Hp)          |      | Nominal Current |           | * Terminal Connection | Ia / In (Ampere) |      | Cable Gland |
| 50Hz             | 60Hz   | 60Hz                    | 50Hz                   | 60Hz    | 50Hz        | 60Hz   | 50Hz                      | 60Hz | 400V 50Hz       | 460V 60Hz |                       | 50Hz             | 60Hz |             |
| 349.8            | 283.9  | MVE 11700/6N-FD-80AX A  | 9920.7                 | 11605.0 | 451.9       | 440.9  | 4.8                       | 4.8  | 7.5             | 6.9       | Y                     | 4.5              | 4.3  | M25 ●       |
| 416.7            | 349.8  | MVE 14500/6N-FD-80AX A  | 11816.7                | 14285.8 | 535.7       | 509.3  | 7.8                       | 7.8  | 12              | 10.5      | Y                     | 5.5              | 5.3  | M25 ●       |
| 658.9            | 459.2  | MVE 19000/6N-FD-90BP A  | 18695.0                | 18763.4 | 736.3       | 727.5  | 8.2                       | 8.6  | 14.1            | 12.7      | Δ                     | 6.4              | 6.4  | M32 ●       |
| 811.6            | 658.9  | MVE 27000/6N-FD-91BP A  | 23029.3                | 26920.4 | 899.5       | 853.2  | 8.6                       | 10.3 | 12.9            | 14.5      | Δ                     | 5.8              | 6.4  | M32 ●       |
| 962.7            | /      | /                       | 27317.2                | /       | 963.4       | /      | 10.7                      | /    | 17.1            | /         | Δ                     | 6.2              | /    | M32 ●       |
| 1143.2           | 805.6  | MVE 33000/6N-FD-105BR B | 32420.8                | 32899.2 | 1485.9      | 1393.3 | 16.0                      | 19.0 | 21              | 21        | Δ                     | 5.8              | 5.8  | M32 ●       |
| 1397.6           | 931.9  | MVE 37750/6N-FD-105BR B | 39638.7                | 38060.2 | 1543.2      | 1411.0 | 16.0                      | 19.0 | 21              | 21        | Δ                     | 5.6              | 5.9  | M32 ●       |
| 1576.4           | 1095.9 | MVE 42290/6N-FD-105BR B | 44720.3                | 44751.2 | 1587.3      | 1499.1 | 16.1                      | 19.4 | 24              | 24        | Δ                     | 5.4              | 5.6  | M32 ●       |
| 1984.4           | 1372.8 | MVE55100/6N-FD-110BS B  | 56287.8                | 56067.4 | 2164.9      | 2039.3 | 18.6                      | 22.8 | 28              | 28        | Δ                     | 4.8              | 5.3  | M32 ●       |

## 8 POLES - 750/900 rpm

| Unbalance (lbin) |        | Model                   | Centrifugal Force (lb) |         | Weight (lb) |        | ELECTRICAL SPECIFICATIONS |      |                 |           |                       |                  |      |             |
|------------------|--------|-------------------------|------------------------|---------|-------------|--------|---------------------------|------|-----------------|-----------|-----------------------|------------------|------|-------------|
| 50Hz             | 60Hz   |                         | 50Hz                   | 60Hz    | 50Hz        | 60Hz   | Input Power (Hp)          |      | Nominal Current |           | * Terminal Connection | Ia / In (Ampere) |      | Cable Gland |
| 50Hz             | 60Hz   | 60Hz                    | 50Hz                   | 60Hz    | 50Hz        | 60Hz   | 50Hz                      | 60Hz | 400V 50Hz       | 460V 60Hz |                       | 50Hz             | 60Hz |             |
| 349,8            | 349,8  | MVE 8000/8N-FD-80AX A   | 5579,8                 | 8035,8  | 456,4       | 456,4  | 3.4                       | 4.0  | 6               | 6         | Y                     | 3.5              | 3.5  | M25 ●       |
| 416,7            | 416,7  | MVE 9700/8N-FD-80AX A   | 6646,9                 | 9572,4  | 511,5       | 511,5  | 6.7                       | 7.9  | 13.5            | 14.2      | Y                     | 3.6              | 3.6  | M25 ●       |
| 838,5            | 838,5  | MVE 19500/8N-FD-90BP A  | 13384,1                | 19272,6 | 875,2       | 875,2  | 9.1                       | 10.1 | 13.4            | 12.5      | Δ                     | 3.5              | 3.5  | M32 ●       |
| 962,7            | 962,7  | MVE 22000/8N-FD-91BP A  | 15363,9                | 22125,4 | 928,1       | 928,1  | 9.4                       | 10.3 | 14.7            | 13.4      | Δ                     | 4.6              | 3.5  | M32 ●       |
| 1611,5           | 1397,6 | MVE 32100/8N-FD-105BR B | 25707,8                | 32105,6 | 1609,4      | 1552,1 | 12.1                      | 14.2 | 19              | 19        | Δ                     | 4.5              | 5    | M32 ●       |
| 1910,2           | 1701,4 | MVE 39000/8N-FD-105BR B | 30472,0                | 39085,4 | 1660,1      | 1616,0 | 12.2                      | 14.8 | 20              | 20        | Δ                     | 5.3              | 5.8  | M32 ●       |
| 2542,1           | 2169,7 | MVE49800/8N-FD-110BS B  | 40553,6                | 49846,0 | 2138,5      | 2039,3 | 18.5                      | 22.1 | 28              | 28        | Δ                     | 5.6              | 5.2  | M32 ●       |

### Notes:

.....

.....

NOTE: Dimensions with coarse degree of accuracy related to UNI 22768/1

This information is provided without warranty, representation, inducement or licence of any kind. It is accurate to the best OLI knowledge or is obtained from sources believed to be accurate. OLI therefore assumes no legal responsibility. The latest and most updated information are available online.



» Declaration of conformity "type B" according to: 2014/35/UE - 2006/42/EC - EN 60034-1  
» Conform to UL1446 and CSA 22.2 No 0-10

STANDARD

EXPLOSION-PROOF

MILLING

SCREEN VIBRATOR

STAINLESS STEEL

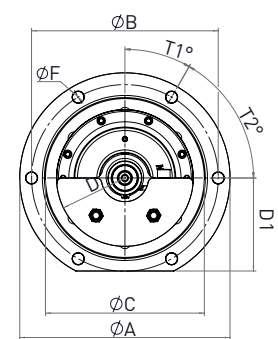
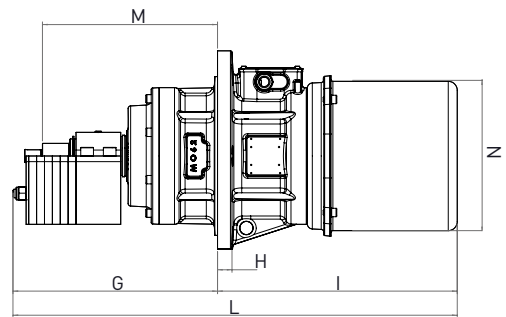
FLANGED DRIVE



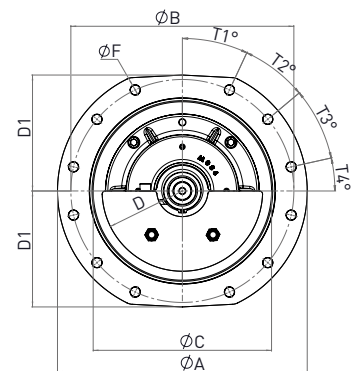
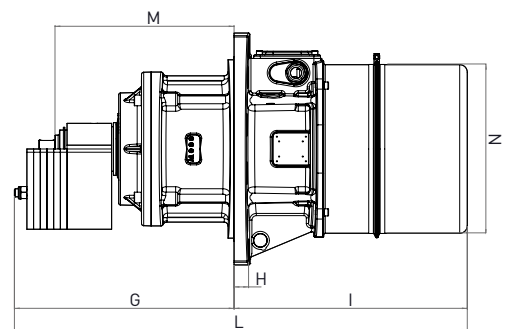
# MVE-FD FLANGED DRIVE



**R**



**S**



## 6 POLES - 1000/1200 rpm

| Model                   | Drawing | Size  | DIMENSIONAL SPECIFICATIONS (in) |       |      |       |       |      |       |       |       |      |       |       |       |
|-------------------------|---------|-------|---------------------------------|-------|------|-------|-------|------|-------|-------|-------|------|-------|-------|-------|
|                         |         |       | Holes                           | B     | F    | A     | C     | D    | D1    | G     |       | H    | I     | L     |       |
|                         |         |       |                                 |       |      |       |       |      |       | 50Hz  | 60Hz  |      |       | 50Hz  | 60Hz  |
| MVE 11700/6N-FD-80AX A  | R       | 80AX  | 6                               | 13.98 | 0.87 | 15.75 | 11.89 | 5.12 | 6.97  | 15.71 | 15.31 | 1.10 | 19.72 | 35.43 | 35.04 |
| MVE 14500/6N-FD-80AX A  | R       | 80AX  | 6                               | 13.98 | 0.87 | 15.75 | 11.89 | 5.12 | 6.97  | 18.07 | 16.89 | 1.10 | 20.51 | 38.58 | 37.40 |
| MVE 19000/6N-FD-90BP A  | S       | 90BP  | 12                              | 19.69 | 0.87 | 22.05 | 15.75 | 7.09 | 10.24 | 16.18 | 14.80 | 1.18 | 18.11 | 34.29 | 32.91 |
| MVE 27000/6N-FD-91BP A  | S       | 91BP  | 12                              | 19.69 | 0.87 | 22.05 | 15.75 | 7.09 | 10.24 | 18.64 | 18.05 | 1.18 | 20.59 | 39.21 | 38.64 |
| /                       | S       | 91BP  | 12                              | 19.69 | 0.87 | 22.05 | 15.75 | 7.09 | 10.24 | 19.23 | /     | 1.18 | 20.59 | 39.80 | /     |
| MVE 33000/6N-FD-105BR B | T       | 105BR | 12                              | 23.23 | 1.02 | 25.39 | 18.90 | 9.09 | 10.63 | 26.57 | 26.57 | 1.38 | 20.47 | 47.05 | 47.05 |
| MVE 37750/6N-FD-105BR B | T       | 105BR | 12                              | 23.23 | 1.02 | 25.39 | 18.90 | 9.09 | 10.63 | 26.57 | 26.57 | 1.38 | 20.47 | 47.05 | 47.05 |
| MVE 42290/6N-FD-105BR B | T       | 105BR | 12                              | 23.23 | 1.02 | 25.39 | 18.90 | 9.09 | 10.63 | 26.57 | 26.57 | 1.38 | 20.47 | 48.23 | 48.23 |
| MVE55100/6N-FD-110BS B  | U       | 110BS | 16                              | 25.20 | 1.02 | 27.56 | 20.47 | 9.84 | 12.99 | 26.57 | 26.57 | 1.77 | 22.01 | 48.58 | 48.58 |

## 8 POLES - 750/900 rpm

| Model                   | Drawing | Size  | DIMENSIONAL SPECIFICATIONS (in) |       |      |       |       |      |       |       |       |      |       |       |       |
|-------------------------|---------|-------|---------------------------------|-------|------|-------|-------|------|-------|-------|-------|------|-------|-------|-------|
|                         |         |       | Holes                           | B     | F    | A     | C     | D    | D1    | G     |       | H    | I     | L     |       |
|                         |         |       |                                 |       |      |       |       |      |       | 50Hz  | 60Hz  |      |       | 50Hz  | 60Hz  |
| MVE 8000/8N-FD-80AX A   | R       | 80AX  | 6                               | 13.98 | 0.87 | 15.75 | 11.89 | 5.12 | 6.97  | 15.71 | 15.71 | 1.10 | 19.72 | 35.43 | 35.43 |
| MVE 9700/8N-FD-80AX A   | R       | 80AX  | 6                               | 13.98 | 0.87 | 15.75 | 11.89 | 5.12 | 6.97  | 18.07 | 18.07 | 1.10 | 20.51 | 38.58 | 38.58 |
| MVE 19500/8N-FD-90BP A  | S       | 90BP  | 12                              | 19.69 | 0.87 | 22.05 | 15.75 | 7.09 | 10.24 | 17.36 | 17.36 | 1.18 | 18.11 | 35.47 | 35.47 |
| MVE 22000/8N-FD-91BP A  | S       | 91BP  | 12                              | 19.69 | 0.87 | 22.05 | 15.75 | 7.09 | 10.24 | 19.23 | 19.23 | 1.18 | 20.59 | 39.80 | 39.80 |
| MVE 32100/8N-FD-105BR B | T       | 105BR | 12                              | 23.23 | 1.02 | 25.39 | 18.90 | 9.09 | 10.63 | 26.57 | 26.57 | 1.38 | 20.47 | 47.05 | 47.05 |
| MVE 39000/8N-FD-105BR B | T       | 105BR | 12                              | 23.23 | 1.02 | 25.39 | 18.90 | 9.09 | 10.63 | 26.57 | 26.57 | 1.38 | 20.47 | 48.23 | 48.23 |
| MVE49800/8N-FD-110BS B  | U       | 110BS | 16                              | 25.20 | 1.02 | 27.56 | 20.47 | 9.84 | 12.99 | 26.57 | 26.57 | 1.77 | 22.01 | 48.58 | 48.58 |



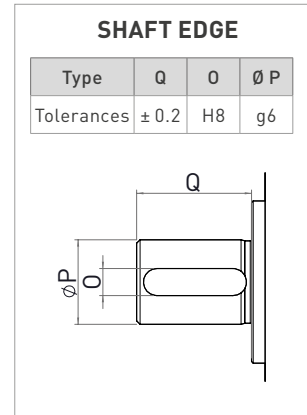
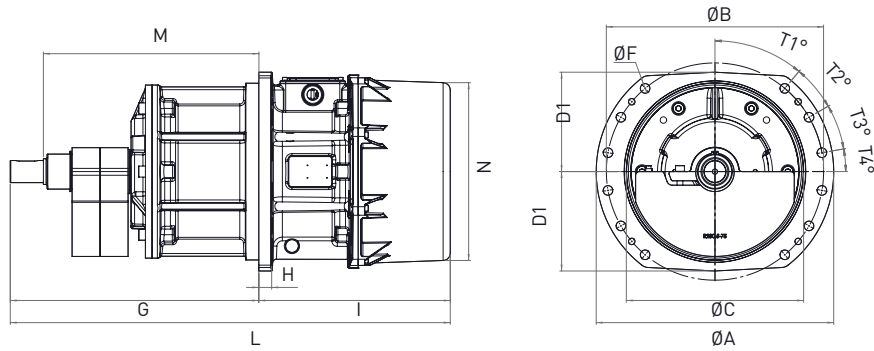
60Hz masses = 50Hz masses adjusted at 100%

To convert kg into Newton:  $N = 9.81 \cdot kg$

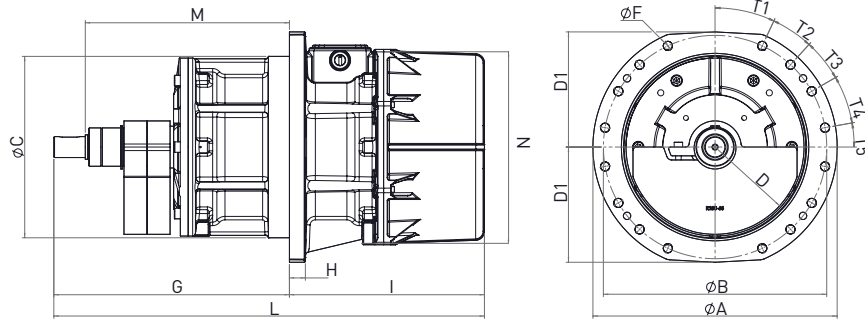


- » IICD Ex tc IIIC Tx IP66
- » Equipment and protective system intended for use in potentially explosive atmospheres (Zone 22) - Directive 2014/34/UE
- » Compliance with Essential Health and Safety Requirements
- » EN 60079-0, EN 60079-31

T



U



| DIMENSIONAL SPECIFICATIONS (in) |       |      |      |      |      |      |      |      |      |       |
|---------------------------------|-------|------|------|------|------|------|------|------|------|-------|
| M                               | N     | O    | P    | Q    | T1   | T2   | T3   | T4   | T5   | Screw |
| 13.11                           | 11.18 | 0.31 | 0.98 | 1.34 | 1.18 | 2.36 | /    | /    | /    | M20   |
| 13.11                           | 11.18 | 0.31 | 0.98 | 1.34 | 1.18 | 2.36 | /    | /    | /    | M20   |
| 13.27                           | 14.88 | 0.47 | 1.57 | 1.42 | 0.98 | 0.98 | 1.08 | 0.49 | /    | M20   |
| 15.43                           | 14.88 | 0.47 | 1.57 | 1.42 | 0.98 | 0.98 | 1.08 | 0.49 | /    | M20   |
| 15.43                           | 14.88 | 0.47 | 1.57 | 1.42 | 0.98 | 0.98 | 1.08 | 0.49 | /    | M20   |
| 23.03                           | 19.49 | 0.71 | 2.36 | 3.54 | 1.57 | 0.79 | 0.79 | 0.39 | /    | M24   |
| 23.03                           | 19.49 | 0.71 | 2.36 | 3.54 | 1.57 | 0.79 | 0.79 | 0.39 | /    | M24   |
| 23.03                           | 19.49 | 0.71 | 2.36 | 3.54 | 1.57 | 0.79 | 0.79 | 0.39 | /    | M24   |
| 22.64                           | 21.65 | 0.71 | 2.36 | 3.54 | 0.98 | 0.69 | 0.69 | 0.79 | 0.39 | M24   |

| DIMENSIONAL SPECIFICATIONS (in) |       |      |      |      |      |      |      |      |      |       |
|---------------------------------|-------|------|------|------|------|------|------|------|------|-------|
| M                               | N     | O    | P    | Q    | T1   | T2   | T3   | T4   | T5   | Screw |
| 13.11                           | 11.18 | 0.31 | 0.98 | 1.34 | 1.18 | 2.36 | /    | /    | /    | M20   |
| 13.11                           | 11.18 | 0.31 | 0.98 | 1.34 | 1.18 | 2.36 | /    | /    | /    | M20   |
| 13.27                           | 14.88 | 0.47 | 1.57 | 1.42 | 0.98 | 0.98 | 1.08 | 0.49 | /    | M20   |
| 15.43                           | 14.88 | 0.47 | 1.57 | 1.42 | 0.98 | 0.98 | 1.08 | 0.49 | /    | M20   |
| 23.03                           | 19.49 | 0.71 | 2.36 | 3.54 | 1.57 | 0.79 | 0.79 | 0.39 | /    | M24   |
| 23.03                           | 19.49 | 0.71 | 2.36 | 3.54 | 1.57 | 0.79 | 0.79 | 0.39 | /    | M24   |
| 22.64                           | 21.65 | 0.71 | 2.36 | 3.54 | 0.98 | 0.69 | 0.69 | 0.79 | 0.39 | M24   |

NOTE: Dimensions with coarse degree of accuracy related to UNI 22768/1

This information is provided without warranty, representation, inducement or licence of any kind. It is accurate to the best OLI knowledge or is obtained from sources believed to be accurate. OLI therefore assumes no legal responsibility. The latest and most updated information are available online.



» Declaration of conformity "type B" according to: 2014/35/UE - 2006/42/EC - EN 60034-1  
 » Conform to UL1446 and CSA 22.2 No 0-10

STANDARD

EXPLOSION-PROOF

MILLING

SCREEN VIBRATOR

STAINLESS STEEL

FLANGED DRIVE



# INSTALLATION

## Mounting

The base plate surface where the vibrator motor is mounted has an allowable tolerance of 0.25mm (0.01in), so that the surfaces rest uniformly against each other to avoid internal tension that may cause breakage of the foot of the vibrating motor.

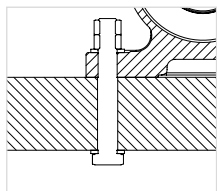
Use 8.8 (grade 5) type bolts, 8.0 type nuts and flat washers belonging to category A EN ISO 7089 / 7092.

The graph below shows the correct torque settings for the different bolt sizes used on the motor vibrators.

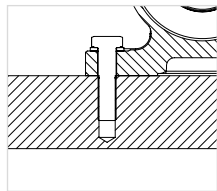
### Motor / Machine interface

| Screw  |          | Washer          |                      | Clamping torque |        |
|--------|----------|-----------------|----------------------|-----------------|--------|
| Metric | Imperial | Metric UNI 6592 | Imperial Flat washer | (Nm)            | (ftlb) |
| M6     | 1/4"     | 6.4 x 12        | 1/4"                 | 9               | 6.5    |
| M8     | 5/16"    | 8.4 x 16        | 5/16"                | 23              | 16.5   |
| M10    | 3/8"     | 10.5 x 20       | 3/8"                 | 45              | 33     |
| M12    | 1/2"     | 13 x 24         | 1/2"                 | 80              | 58     |
| M16    | 5/8"     | 17 x 30         | 5/8"                 | 185             | 137    |
| M20    | 3/4"     | 21 x 37         | 3/4"                 | 373             | 275    |
| M22    | 7/8"     | 23 x 39         | 7/8"                 | 550             | 411    |
| M24    | 7/8"     | 25 x 44         | 7/8"                 | 696             | 513    |
| M27    | 1"       | 28 x 50         | 1"                   | 873             | 645    |
| M36    | 1-3/8"   | 37 x 66         | 1-3/8"               | 1,864           | 1,370  |
| M42    | 1 5/8"   | 37 x 66         | 1 5/8"               | 2,850           | 2,102  |

### FIXING

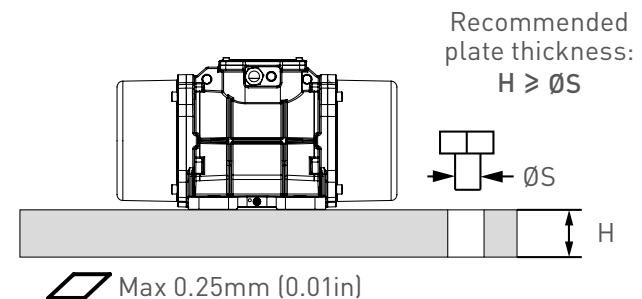


Smooth through borehole  
+ screw  
+ flat washer  
+ nut and counter nut



Tapped threaded borehole  
+ screw  
+ flat washer

### SURFACE FLATNESS TOLERANCE



**MACHINED & NOT PAINTED  
SUPPORT PLATE**





## Electrical connection

Verify that the voltage and frequency supply match the ones indicated on the rating plate of the electric vibrator.

If the motor is operated via a variable frequency drive do not run it under 20 Hz and not over the rated frequency.

Insert the power cable through the cable gland. The lead-in wires have to be of the eyelet-type, pre-insulated, with a bore that suits the terminals of the junction box in order to prevent overheating of the wire. Use only conductors that have a suitable cross-section.

Connect the lead wires to the pins (as shown in the diagram below) and tighten them with the specified torque.

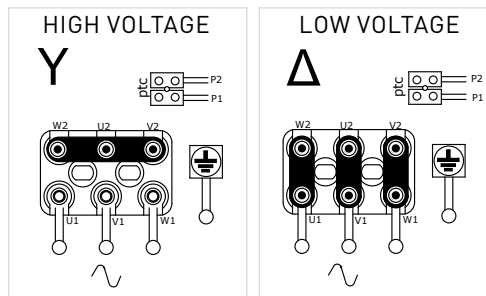
**Do not forget to fix the earthing cable to the provided studs → Compulsory connection!**

Before closing the junction box make sure that the cover gasket is properly fitted in order to keep the specified IP protection.

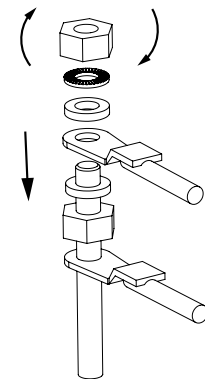
For more details on motor installation refer to product manuals.

| Junction box nuts tightening torque |     |      |
|-------------------------------------|-----|------|
| Screw                               | Nm  | ftlb |
| M4                                  | 2.5 | 1.84 |
| M5                                  | 4   | 2.95 |
| M6                                  | 5   | 3.69 |
| M8                                  | 6   | 4.43 |
| M10                                 | 8   | 5.90 |

### TERMINAL CONNECTIONS



Check "Terminal Connection" column label to know the factory preset connection of each vibrator.



## Overload protection

All electric vibrators **MUST** be connected to a suitable external overload protection.

When using two electric vibrators in sync, each of them has to be connected to an external overload protection that must be interlocked to make sure both motors are stopped if one fails.

Always use a thermal-magnetic type motor protection, with delayed cut-off, to avoid stopping

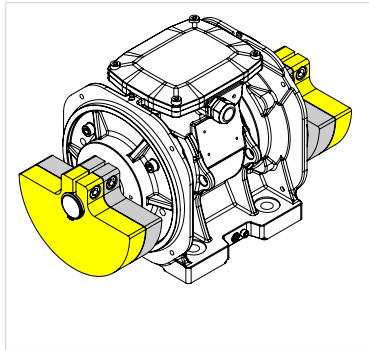
the motor during start-up when the current draw is higher than the rated running current for a few seconds.

Cut-off of the overload protection should be set at a maximum of +10% of the rated current.

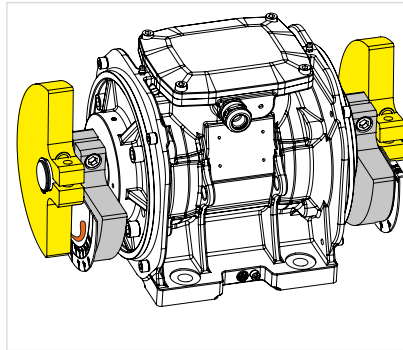


# HOW TO CHANGE THE VIBRATION INTENSITY

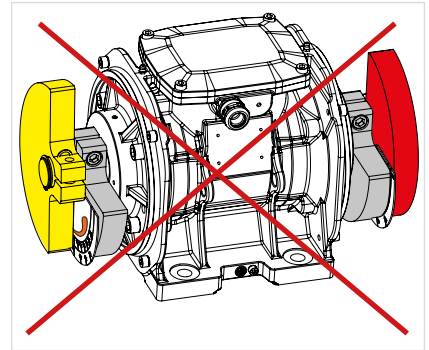
## Adjustable masses - Type 1



MASSES AT 100%



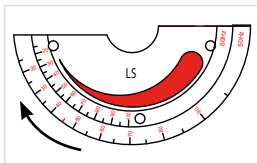
ADJUSTED MASSES



INCORRECTLY ADJUSTED MASSES

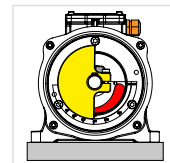
### 2 TIPS TO CORRECTLY ADJUST MASSES:

Rotate the mass following the design on the plate: from the thicker tip towards the thin tip.

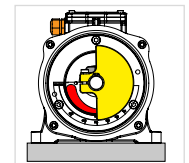


*left side of the motor.  
for sizes up to 60*

Rotate the masses in the opposite direction to the cable gland.

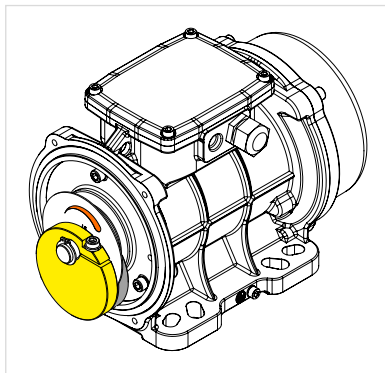


*left side*

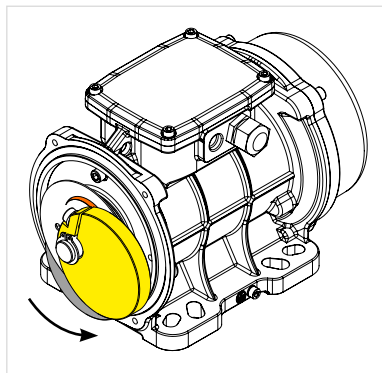


*right side*

## Adjustable masses - Type 2

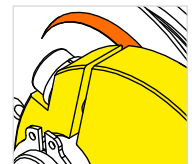


MASSES AT 100%

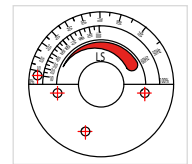


ADJUSTED MASSES

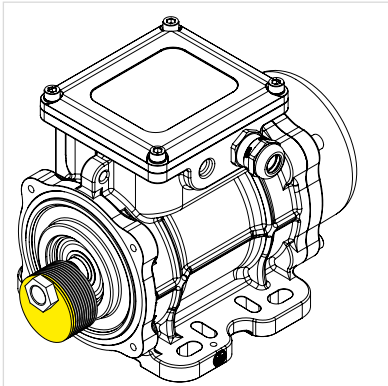
The fissure in the mass indicates the degree of adjustment.



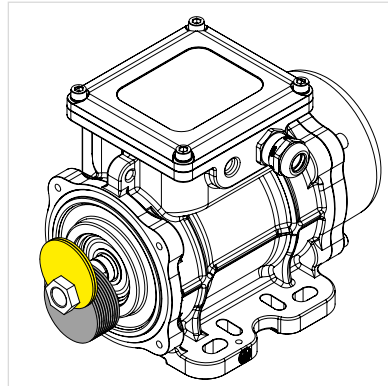
Rotate the mass following the design on the plate: from the thicker tip towards the thin tip.



## Adjustable masses – Type 3 (blade masses)



MASSES AT 100%



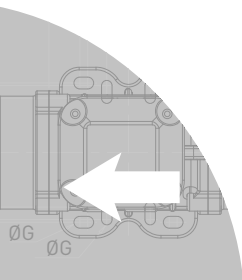
ADJUSTED MASSES

For technical information on the regulation of blade masses refer to the Use and Maintenance Manual.



**Warning:**  
**DO NOT grease new motors before installation.**

OLI motors with roller bearings leave the factory filled with the right quantity of grease while those with ball bearing do not need any lubrication.



**TECHNICAL DRAWINGS**



# WHEN YOU NEED IT, WHERE YOU NEED IT.

## THE WORLDWIDE LEADER IN VIBRATION TECHNOLOGY

[www.olivibra.com](http://www.olivibra.com)



### OLI Headquarters

VIA SPARATO, 14  
41036 MEDOLLA (MO) - ITALY

+39 0535 41 06 11

INFO@OLIVIBRA.COM

### OLI U.S.A.

2625 N. BERKELEY LAKE RD.  
SUITE # 500  
DULUTH, GA 30096 - USA

770.622.1494

SALES@OLIVIBRATOR.COM

### OLI worldwide

OLI Australia

OLI Brazil

OLI China

OLI France

OLI Germany

OLI India

OLI Indonesia

OLI Italy

OLI Korea

OLI Malaysia

OLI Malta

OLI Mexico

OLI Middle East

OLI Nordic

OLI Poland

OLI Russia

OLI South Africa

OLI Spain

OLI Thailand

OLI Turkey

OLI UK

OLI USA

OLI Vietnam

